



PARTS CATALOGUE

AL115F (54P1) INDONESIA

AL115FC (54P2) INDONESIA

AL115FC (54PA) INDONESIA

AL115FC (54PB) INDONESIA

AL115F/AL115FC
PARTS CATALOGUE
©2012 by Yamaha Motor Co., Ltd.
1st edition, February 2012
All rights reserved.
Any reprinting or unauthorized use
without the written permission of
Yamaha Motor Co., Ltd.
is expressly prohibited.
Printed in Japan.

FOREWORD

This Parts Catalogue is related to the parts for the model(s) on the cover page. When you are ordering replacement parts, please refer to this Parts Catalogue and quote both part numbers and part names correctly.

1. Modifications or additions which have been made after the issue of the Parts Catalogue will be announced in the Parts News.
It is advisable that you make the necessary corrections to the Parts Catalogue according to the Parts News.

2. Abbreviations

The following abbreviations are used in this Parts Catalogue.

“UR” Use specified parts number.

“UN” Use as many as needed.

“AP” Alternate Parts

“LM” Locally Made (Parts need to be ordered locally)

“F#” Frame No. (Applicable machine No.)

“O/S” Over Size

3. The number of components for assembly

- Parts, which are to be supplied in an assembly, are listed with a dot (.) in front of the part name as shown below.
- The numeral appearing to the right of each component part indicates the quantity of parts for each assembly unit.

| PART NO. | DESCRIPTION | Q'TY | REMARKS |
|--------------|--------------------------|------|---------|
| 2F5-83310-60 | FRONT FLASHER LIGHT ASSY | 2 | |
| 115-83311-60 | .BULB (6V-18W) | 1 | |

4. Applicable colours of graphics are represented in the “REMARKS” as shown below.

| PART NO. | DESCRIPTION | Q'TY | REMARKS |
|-----------------|---------------------|------|---------|
| 2N4-24110-00-X5 | FUEL TANK COMP. | 2 | MXR |
| 3J1-24240-10 | .GRAPHIC, FUEL TANK | 1 | FOR MXR |

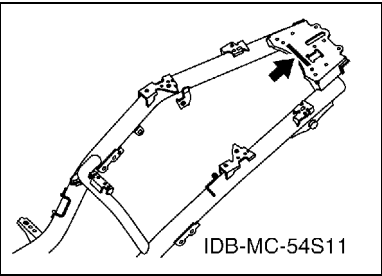
5. Note that the illustrations for reference in finding parts numbers are not to be used for assembling. When assembling, please use the applicable service manual.

6. The asterisk (*) before a reference number indicates modified items after the first edition.

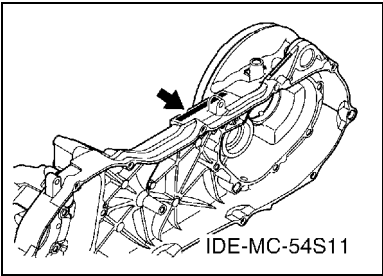
FOREWORD

7. Applicable Serial No.

Frame Serial No.



Engine Serial No.



8. Applicable Colour Code (The (*) mark shows Model colour.)

| Abbreviation | Colour Name | Colour Code |
|--------------|--------------------------|-------------|
| BMC(*) | BLUE METALLIC C | 0775 |
| LGM6(*) | LEAF GREEN METALLIC 6 | 0946 |
| RM7(*) | RED METALLIC 7 | 1218 |
| RSM2(*) | REDDISH BLACK METALLIC 2 | 1159 |
| SL | SILVER | 0035 |
| SMX(*) | BLACK METALLIC X | 0903 |
| WM6(*) | WHITE METALLIC 6 | 1124 |
| WSA | WHITE SOLID A | 1330 |
| YB | YAMAHA BLACK | 0033 |
| | | |

9. Applicable Starting Serial No.

Frame Serial No.

| Serial No. | Name Of Q'ty Column | Model Code |
|------------|---------------------|------------|
| | | |
| | | |
| | | |
| | | |
| | | |

Engine Serial No.

| Serial No. | Name Of Q'ty Column | Model Code |
|------------|---------------------|------------|
| | | |
| | | |
| | | |
| | | |
| | | |

CONTENTS

ENGINE

| | |
|---------------------------|----|
| CYLINDER | 1 |
| CRANKSHAFT & PISTON | 2 |
| VALVE | 3 |
| CAMSHAFT & CHAIN | 4 |
| OIL PUMP | 5 |
| AIR SHROUD & FAN | 6 |
| INTAKE | 7 |
| EXHAUST | 9 |
| CRANKCASE | 10 |
| CRANKCASE COVER 1 | 12 |
| STARTER | 13 |
| CLUTCH | 14 |
| TRANSMISSION | 16 |

CHASSIS

| | |
|-----------------------------------|----|
| FRAME | 17 |
| FENDER | 18 |
| SIDE COVER | 20 |
| REAR ARM & SUSPENSION | 24 |
| STEERING | 25 |
| FUEL TANK | 27 |
| SEAT | 28 |
| FRONT WHEEL FOR CAST WHEEL | 29 |
| FRONT WHEEL FOR SPOKE WHEEL | 30 |
| FRONT BRAKE CALIPER | 31 |
| FRONT BRAKE CALIPER 2 | 32 |
| REAR WHEEL FOR CAST WHEEL | 33 |
| REAR WHEEL FOR SPOKE WHEEL | 34 |
| STEERING HANDLE & CABLE | 35 |
| FRONT MASTER CYLINDER | 37 |
| STAND & FOOTREST | 38 |
| LEG SHIELD | 40 |
| GENERATOR | 44 |
| STARTING MOTOR | 45 |
| FLASHER LIGHT | 46 |
| METER | 47 |
| HEADLIGHT | 48 |
| TAILLIGHT | 49 |
| HANDLE SWITCH & LEVER | 50 |
| ELECTRICAL 1 | 51 |
| ELECTRICAL 2 | 52 |

INDEX

| | |
|-----------------------|----|
| NUMERICAL INDEX | 53 |
|-----------------------|----|

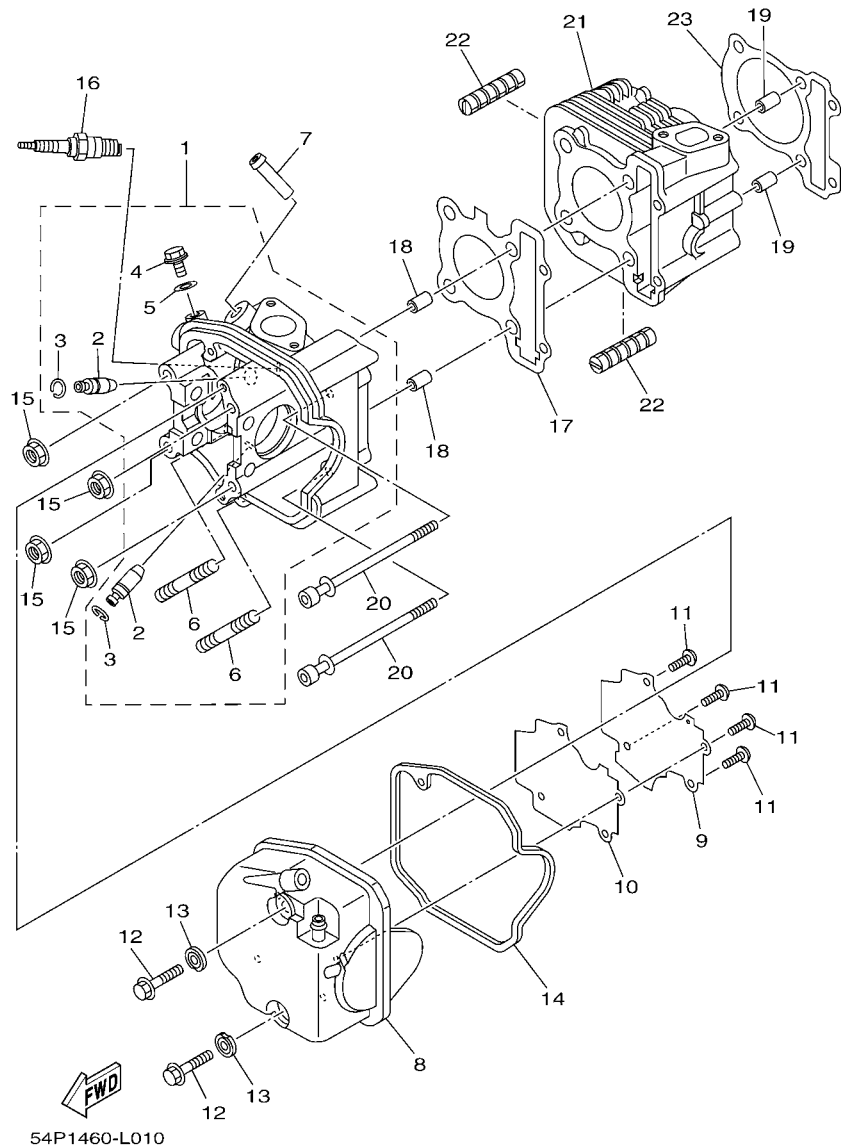
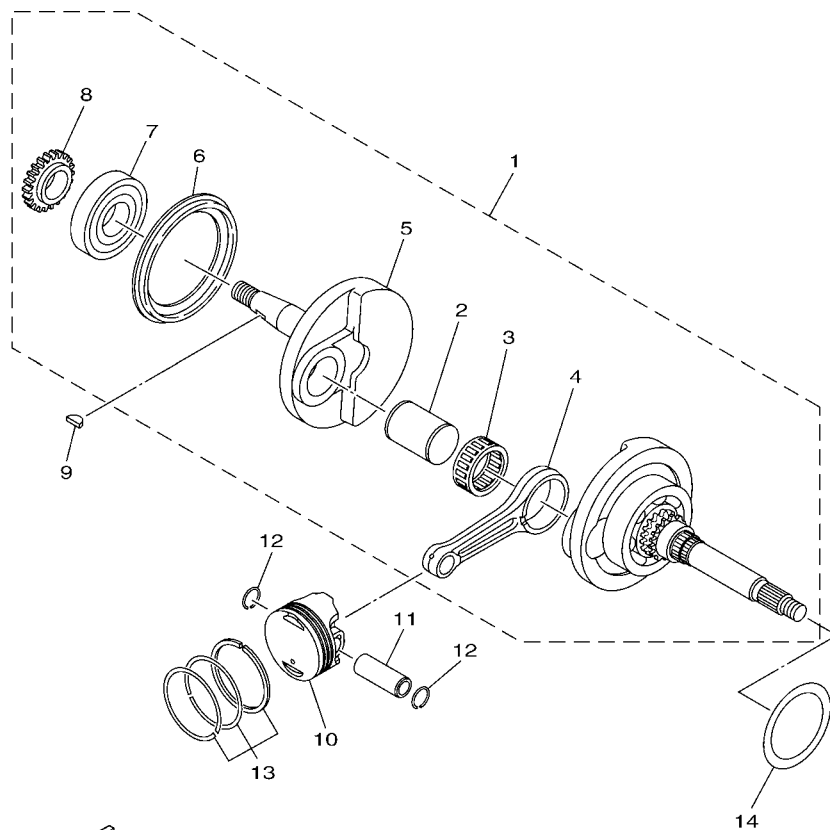


FIG. 1 CYLINDER

| REF. NO. | PART NO. | DESCRIPTION | 54P1 | 54P2 | 54PA | 54PB | REMARKS |
|-------------|--------------|---------------------------|------|------|------|------|---------|
| 1 | 54P-E1102-00 | CYLINDER HEAD ASSY | 1 | 1 | 1 | 1 | |
| 2 | 54P-E1133-10 | .GUIDE, VALVE 1 | 2 | 2 | 2 | 2 | |
| 3 | 93440-10085 | .CIRCLIP | 2 | 2 | 2 | 2 | |
| 4 | 95022-06010 | .BOLT, FLANGE | 1 | 1 | 1 | 1 | |
| 5 | 90430-06014 | .GASKET | 1 | 1 | 1 | 1 | |
| 6 | 95612-08618 | .BOLT, STUD | 2 | 2 | 2 | 2 | |
| 7 | 54P-E111J-00 | PIPE 1 | 1 | 1 | 1 | 1 | |
| 8 | 54P-E1191-00 | COVER, CYLINDER HEAD 1 | 1 | 1 | 1 | 1 | |
| 9 | 54P-E1165-00 | PLATE, BREATHER | 1 | 1 | 1 | 1 | |
| 10 | 54P-E1169-00 | GASKET, BREATHER COVER | 1 | 1 | 1 | 1 | |
| 11 | 90149-05801 | SCREW | 4 | 4 | 4 | 4 | |
| 12 | 95812-06030 | BOLT, FLANGE | 2 | 2 | 2 | 2 | |
| 13 | 54P-E1173-00 | WASHER, SEALING | 2 | 2 | 2 | 2 | |
| 14 | 54P-E1193-00 | GASKET, HEAD COVER 1 | 1 | 1 | 1 | 1 | |
| 15 | 90179-08518 | NUT | 4 | 4 | 4 | 4 | |
| 16 | 94700-00880 | PLUG, SPARK (NGK CR6HSA) | 1 | 1 | 1 | 1 | |
| 17 | 54P-E1181-00 | GASKET, CYLINDER HEAD 1 | 1 | 1 | 1 | 1 | |
| 18 | 91810-14809 | PIN, DOWEL | 2 | 2 | 2 | 2 | |
| 19 | 91810-14809 | PIN, DOWEL | 2 | 2 | 2 | 2 | |
| 20 | 90110-06862 | BOLT, HEXAGON SOCKET HEAD | 2 | 2 | 2 | 2 | |
| 21 | 54P-E1311-00 | CYLINDER 1 | 1 | 1 | | | |
| | 54P-E1311-10 | CYLINDER 1 | | | 1 | 1 | |
| 22 | 54P-E1162-00 | ABSORBER 2 | 2 | 2 | 2 | 2 | |
| 23 | 54P-E1351-00 | GASKET, CYLINDER | 1 | 1 | 1 | 1 | |
| | | | | | | | |



54P1460-L020

FIG. 2 CRANKSHAFT & PISTON

| REF. NO. | PART NO. | DESCRIPTION | 54P1 | 54P2 | 54PA | 54PB | REMARKS |
|----------|--------------|-----------------------|------|------|------|------|----------|
| 1 | 54P-E1400-00 | CRANKSHAFT ASSY | 1 | 1 | | | |
| | 54P-E1400-10 | CRANKSHAFT ASSY | | | 1 | 1 | |
| 2 | 5MX-E1681-10 | .PIN, CRANK 1 | 1 | 1 | 1 | 1 | |
| 3 | 93310-528Y8 | .BEARING | 1 | 1 | 1 | 1 | |
| 4 | 5D9-E1651-00 | .ROD, CONNECTING | 1 | 1 | 1 | 1 | |
| 5 | 54P-E1422-00 | .CRANK 2 | 1 | 1 | 1 | 1 | |
| 6 | 5LW-E3452-00 | .COVER, ROTOR FILTER | 1 | 1 | 1 | 1 | |
| 7 | 93306-372X2 | .BEARING | 1 | 1 | | | |
| | 93306-372Y5 | .BEARING | | | 1 | 1 | |
| 8 | 5TL-E3324-00 | .GEAR, PUMP DRIVE | 1 | 1 | 1 | 1 | |
| 9 | 90280-03017 | KEY, WOODRUFF | 1 | 1 | 1 | 1 | |
| 10 | 54P-E1631-00 | PISTON (STD) | 1 | 1 | 1 | 1 | |
| 11 | 54P-E1633-00 | PIN, PISTON | 1 | 1 | 1 | 1 | |
| 12 | 93450-14088 | CIRCLIP | 2 | 2 | 2 | 2 | |
| 13 | 54P-E1603-00 | PISTON RING SET (STD) | 1 | 1 | 1 | 1 | |
| 14 | 54P-E1445-00 | SPACER | 1 | 1 | 1 | 1 | UR T:0.5 |
| | 54P-E1445-10 | SPACER | 1 | 1 | 1 | 1 | UR T:0.6 |
| | | | | | | | |
| | | | | | | | |
| | | | | | | | |
| | | | | | | | |



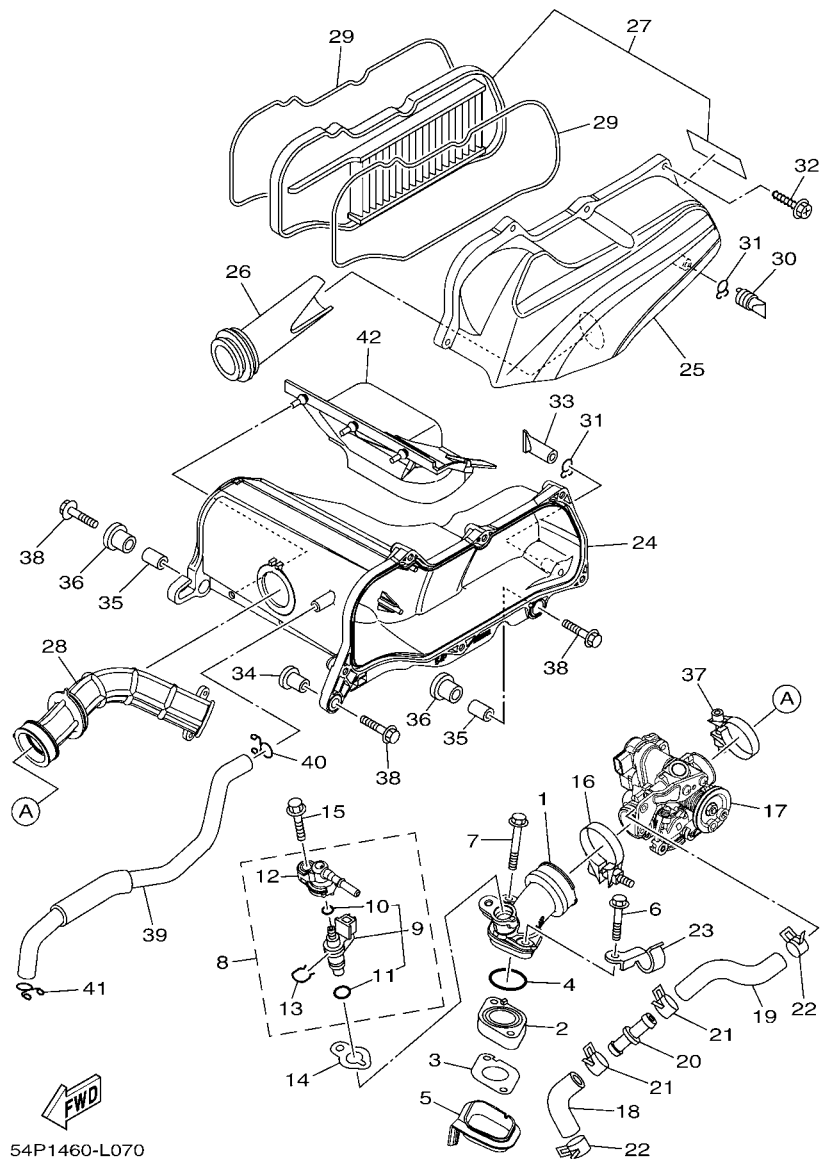


FIG. 7 INTAKE

| REF. NO. | PART NO. | DESCRIPTION | 54P1 | 54P2 | 54PA | 54PB | REMARKS |
|----------|--------------|--------------------------|------|------|------|------|---------|
| 1 | 54P-E3585-00 | MANIFOLD | 1 | 1 | 1 | 1 | |
| 2 | 54P-E3595-00 | JOINT | 1 | 1 | 1 | 1 | |
| 3 | 54P-E3556-00 | GASKET, MANIFOLD | 1 | 1 | 1 | 1 | |
| 4 | 93210-30611 | O-RING | 1 | 1 | 1 | 1 | |
| 5 | 54P-E3593-00 | DAMPER | 1 | 1 | 1 | 1 | |
| 6 | 90105-068A5 | BOLT, FLANGE | 1 | 1 | 1 | 1 | |
| 7 | 90105-068A6 | BOLT, FLANGE | 1 | 1 | 1 | 1 | |
| 8 | 54P-E3770-00 | INJECTOR ASSY | 1 | 1 | 1 | 1 | |
| 9 | 54P-E3761-00 | .INJECTOR | 1 | 1 | 1 | 1 | |
| 10 | 54P-E4147-00 | ..O-RING | 1 | 1 | 1 | 1 | |
| 11 | 5CA-E4147-00 | ..O-RING | 1 | 1 | 1 | 1 | |
| 12 | 54P-E3938-00 | .PIPE | 1 | 1 | 1 | 1 | |
| 13 | 54P-E4137-00 | .CLIP | 1 | 1 | 1 | 1 | |
| 14 | 54P-E3557-00 | GASKET | 1 | 1 | 1 | 1 | |
| 15 | 95812-06025 | BOLT, FLANGE | 1 | 1 | 1 | 1 | |
| 16 | 54P-E3474-00 | BAND | 1 | 1 | 1 | 1 | |
| 17 | 54P-E3750-00 | THROTTLE BODY ASSY | 1 | 1 | 1 | 1 | |
| 18 | 54P-E3892-00 | HOSE, AIR 2 | 1 | 1 | 1 | 1 | |
| 19 | 54P-E3895-00 | HOSE, AIR | 1 | 1 | 1 | 1 | |
| 20 | 54P-E3815-00 | JOINT 1 | 1 | 1 | 1 | 1 | |
| 21 | 90467-15804 | CLIP | 2 | 2 | 2 | 2 | |
| 22 | 90467-15804 | CLIP | 2 | 2 | 2 | 2 | |
| 23 | 54P-E4146-00 | PLATE | 1 | 1 | 1 | 1 | |
| 24 | 54P-E4411-00 | CASE, AIR CLEANER 1 | 1 | 1 | 1 | 1 | |
| 25 | 54P-E4412-00 | CAP, CLEANER CASE 1 | 1 | 1 | 1 | 1 | |
| 26 | 54P-E4437-00 | DUCT | 1 | 1 | 1 | 1 | |
| 27 | 54P-WE445-00 | AIR CLEANER ELEMENT ASSY | 1 | 1 | 1 | 1 | |

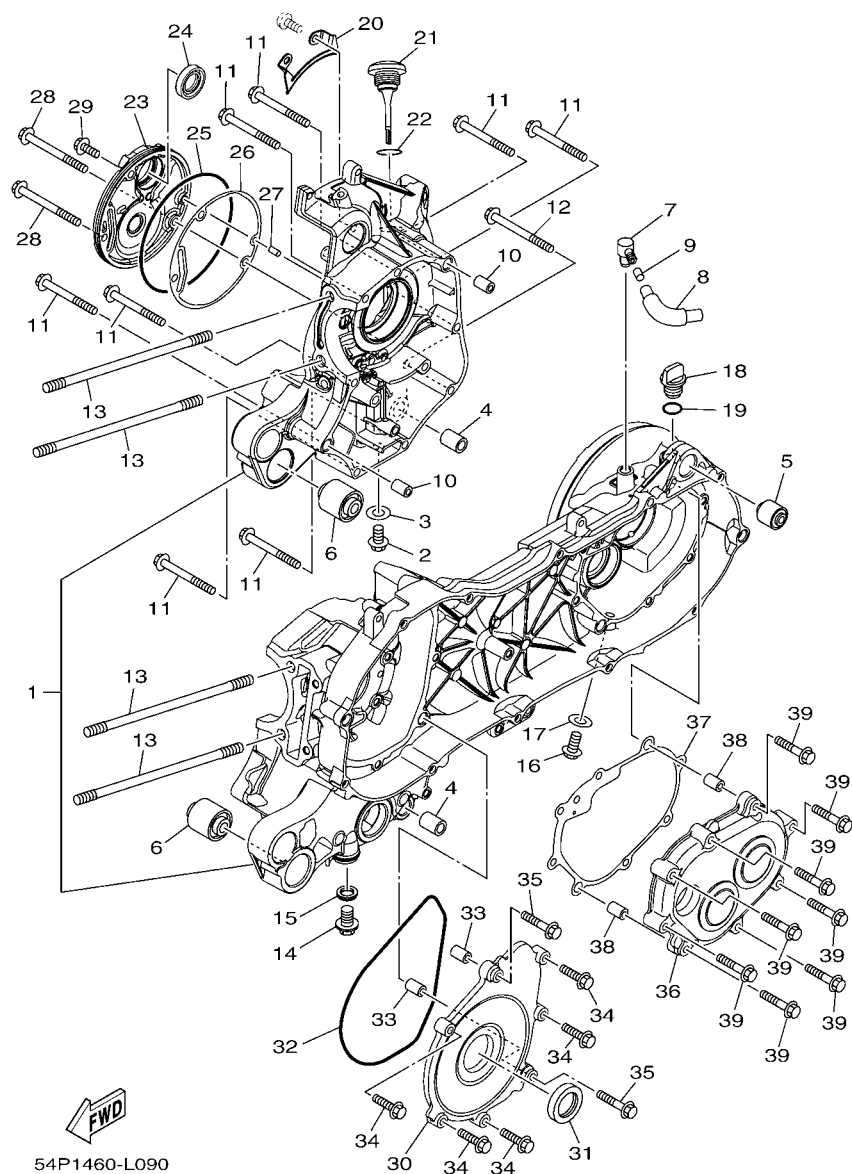


FIG. 9 CRANKCASE

| REF. NO. | PART NO. | DESCRIPTION | 54P1 | 54P2 | 54PA | 54PB | REMARKS |
|----------|--------------|---------------------------|------|------|------|------|---------|
| 1 | 54P-E5150-00 | CRANKCASE ASSY | 1 | 1 | | | |
| | 54P-E5150-10 | CRANKCASE ASSY | | | 1 | 1 | |
| 2 | 95022-08012 | BOLT, FLANGE | 1 | 1 | 1 | 1 | |
| 3 | 90430-08119 | GASKET | 1 | 1 | 1 | 1 | |
| 4 | 54P-F7121-00 | BUSH | 2 | 2 | 2 | 2 | |
| 5 | 5MX-F2216-00 | BUSH, REAR SHOCK ABSORBER | 1 | 1 | 1 | 1 | |
| 6 | 90388-10805 | DAMPER | 2 | 2 | 2 | 2 | |
| 7 | 54P-E5371-00 | BREATHER | 1 | 1 | 1 | 1 | |
| 8 | 54P-E5373-00 | PIPE, BREATHER | 1 | 1 | 1 | 1 | |
| 9 | 14D-E5408-00 | ELEMENT 2 | 1 | 1 | 1 | 1 | |
| 10 | 91810-14809 | PIN, DOWEL | 2 | 2 | 2 | 2 | |
| 11 | 95022-06060 | BOLT, FLANGE | 8 | 8 | 8 | 8 | |
| 12 | 95022-06070 | BOLT, FLANGE | 1 | 1 | 1 | 1 | |
| 13 | 90116-08843 | BOLT, STUD | 4 | 4 | 4 | 4 | |
| 14 | 90340-12808 | PLUG, STRAIGHT SCREW | 1 | 1 | 1 | 1 | |
| 15 | 4YS-E1198-00 | GASKET | 1 | 1 | 1 | 1 | |
| 16 | 95812-08016 | BOLT, FLANGE | 1 | 1 | 1 | 1 | |
| 17 | 90430-08119 | GASKET | 1 | 1 | 1 | 1 | |
| 18 | 5LW-E5363-00 | PLUG, OIL | 1 | 1 | 1 | 1 | |
| 19 | 93210-148H8 | O-RING | 1 | 1 | 1 | 1 | |
| 20 | 54P-E5113-00 | PLATE | 1 | 1 | 1 | 1 | |
| 21 | 54P-E5362-00 | PLUG, OIL LEVEL | 1 | 1 | 1 | 1 | |
| 22 | 5LW-E3769-00 | O-RING | 1 | 1 | 1 | 1 | |
| 23 | 54P-E5417-00 | COVER, CAP | 1 | 1 | 1 | 1 | |
| 24 | 93102-19814 | OIL SEAL | 1 | 1 | 1 | 1 | |
| 25 | 93211-07800 | O-RING | 1 | 1 | 1 | 1 | |
| 26 | 54P-E5453-00 | GASKET | 1 | 1 | 1 | 1 | |

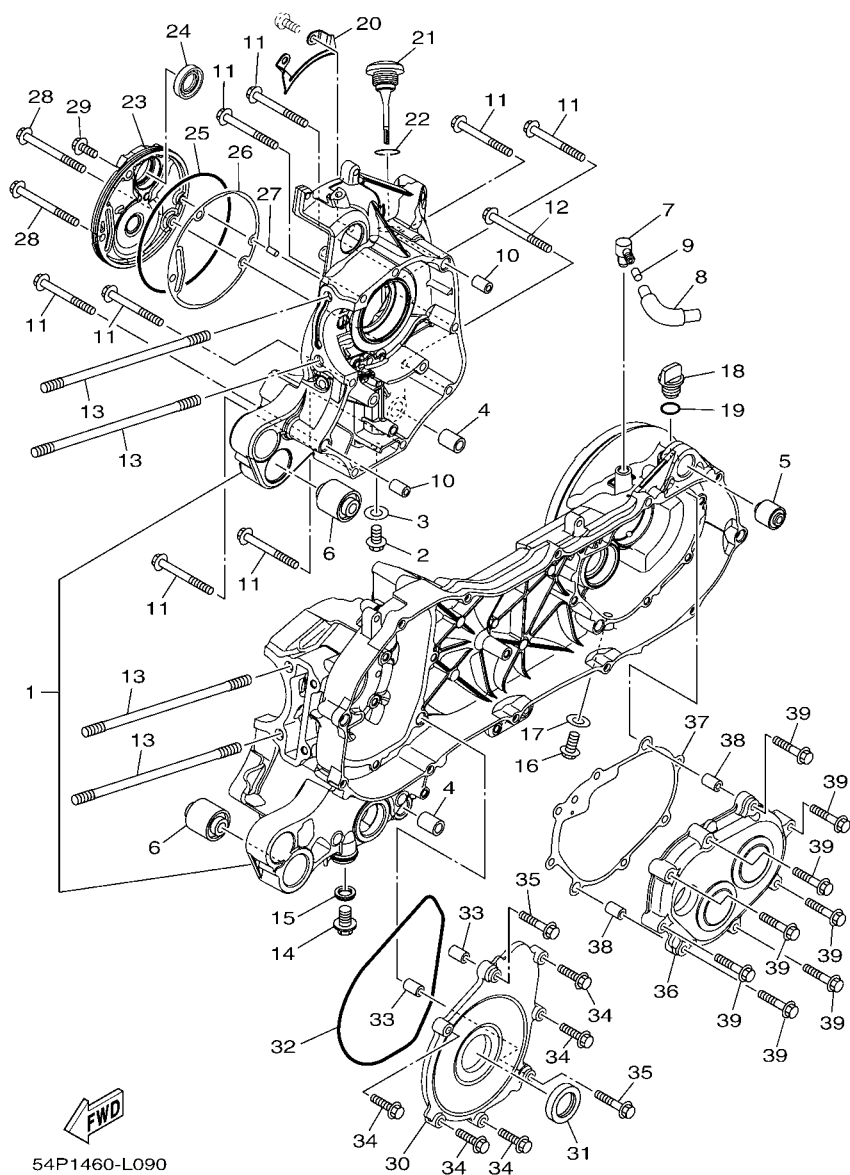


FIG. 9 CRANKCASE

| REF. NO. | PART NO. | DESCRIPTION | 54P1 | 54P2 | 54PA | 54PB | | REMARKS |
|-------------|--------------|---------------------------|------|------|------|------|--|---------|
| 27 | 99480-05010 | PIN | 1 | 1 | 1 | 1 | | |
| 28 | 95022-06070 | BOLT, FLANGE | 2 | 2 | 2 | 2 | | |
| 29 | 95022-06016 | BOLT, FLANGE | 1 | 1 | 1 | 1 | | |
| 30 | 54P-E5423-00 | COVER 2 | 1 | 1 | 1 | 1 | | |
| 31 | 93102-25816 | OIL SEAL | 1 | 1 | 1 | 1 | | |
| 32 | 93211-37803 | O-RING | 1 | 1 | 1 | 1 | | |
| 33 | 91810-14809 | PIN, DOWEL | 2 | 2 | 2 | 2 | | |
| 34 | 95022-06025 | BOLT, FLANGE | 5 | 5 | 5 | 5 | | |
| 35 | 95022-06035 | BOLT, FLANGE | 2 | 2 | 2 | 2 | | |
| 36 | 54P-E5421-00 | COVER, CRANKCASE 2 | 1 | 1 | 1 | 1 | | |
| 37 | 54P-E5461-00 | GASKET, CRANKCASE COVER 2 | 1 | 1 | 1 | 1 | | |
| 38 | 91810-14809 | PIN, DOWEL | 2 | 2 | 2 | 2 | | |
| 39 | 95022-06035 | BOLT, FLANGE | 8 | 8 | 8 | 8 | | |
| | | | | | | | | |
| | | | | | | | | |
| | | | | | | | | |
| | | | | | | | | |
| | | | | | | | | |

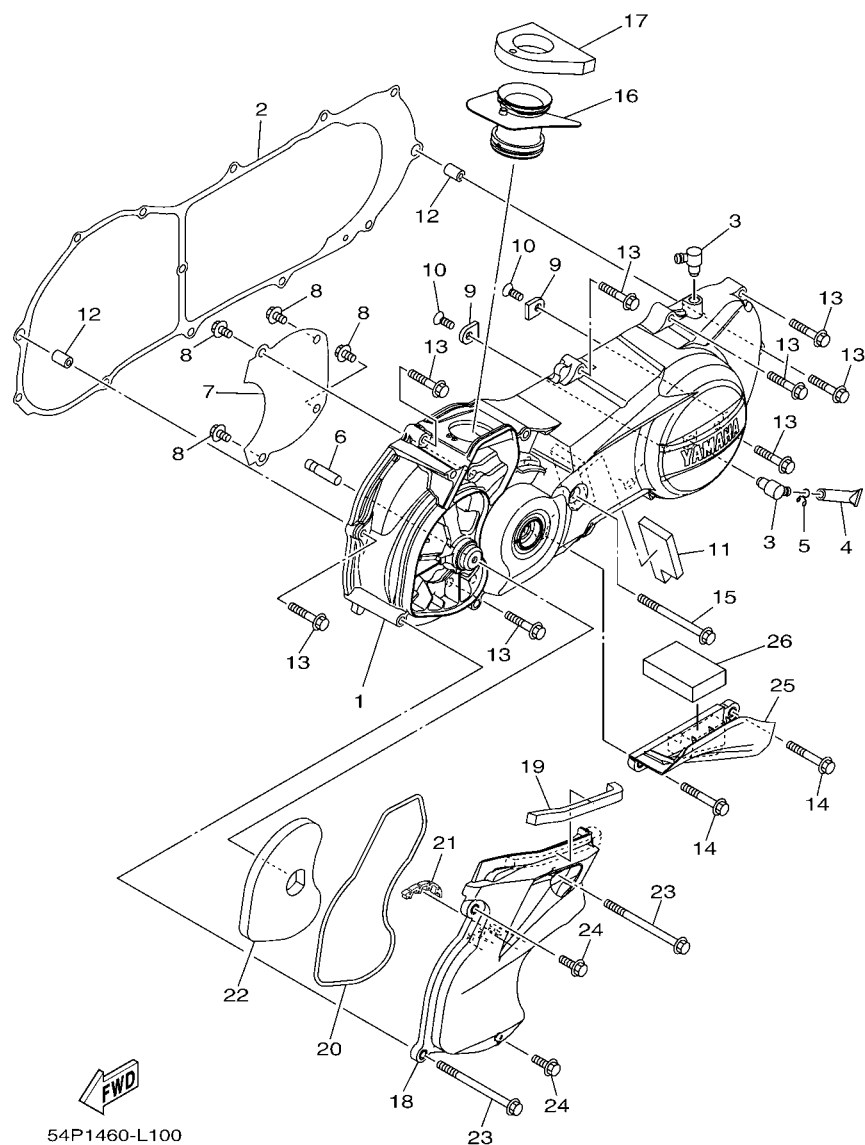


FIG. 10 CRANKCASE COVER 1

| REF. NO. | PART NO. | DESCRIPTION | 54P1 | 54P2 | 54PA | 54PB | REMARKS |
|----------|--------------|---------------------------|------|------|------|------|---------|
| 1 | 54P-E5411-00 | COVER, CRANKCASE 1 | 1 | 1 | 1 | 1 | |
| 2 | 54P-E5451-00 | GASKET, CRANKCASE COVER 1 | 1 | 1 | 1 | 1 | |
| 3 | 54P-E5371-00 | BREATHER | 2 | 2 | 2 | 2 | |
| 4 | 4ST-E443E-00 | PIPE, DRAIN | 1 | 1 | 1 | 1 | |
| 5 | 90467-110A3 | CLIP | 1 | 1 | 1 | 1 | |
| 6 | 5LW-15659-01 | SHAFT | 1 | 1 | 1 | 1 | |
| 7 | 54P-E5191-00 | PLATE | 1 | 1 | 1 | 1 | |
| 8 | 95022-06010 | BOLT, FLANGE | 4 | 4 | 4 | 4 | |
| 9 | 54P-E5383-00 | PLATE, BEARING COVER | 2 | 2 | 2 | 2 | |
| 10 | 90151-06811 | SCREW, COUNTERSUNK | 2 | 2 | 2 | 2 | |
| 11 | 54P-E5316-00 | DAMPER 1 | 1 | 1 | 1 | 1 | |
| 12 | 91810-14809 | PIN, DOWEL | 2 | 2 | 2 | 2 | |
| 13 | 95022-06035 | BOLT, FLANGE | 8 | 8 | 8 | 8 | |
| 14 | 95022-06045 | BOLT, FLANGE | 2 | 2 | 2 | 2 | |
| 15 | 95022-06080 | BOLT, FLANGE | 1 | 1 | 1 | 1 | |
| 16 | 54P-E5473-00 | DUCT, AIR | 1 | 1 | 1 | 1 | |
| 17 | 54P-E5408-00 | ELEMENT 2 | 1 | 1 | 1 | 1 | |
| 18 | 54P-E5471-00 | DUCT, AIR | 1 | 1 | 1 | 1 | |
| 19 | 90520-10811 | DAMPER, PLATE | 1 | 1 | 1 | 1 | |
| 20 | 54P-E5472-00 | SEAL, AIR DUCT | 1 | 1 | 1 | 1 | |
| 21 | 54P-E5495-00 | SEAL, PROTECTOR 1 | 1 | 1 | 1 | 1 | |
| 22 | 54P-E5407-00 | ELEMENT 1 | 1 | 1 | 1 | 1 | |
| 23 | 95822-06090 | BOLT, FLANGE | 2 | 2 | 2 | 2 | |
| 24 | 95822-06020 | BOLT, FLANGE | 2 | 2 | 2 | 2 | |
| 25 | 54P-E5413-00 | COVER | 1 | 1 | 1 | 1 | |
| 26 | 90520-15806 | DAMPER, PLATE | 1 | 1 | 1 | 1 | |

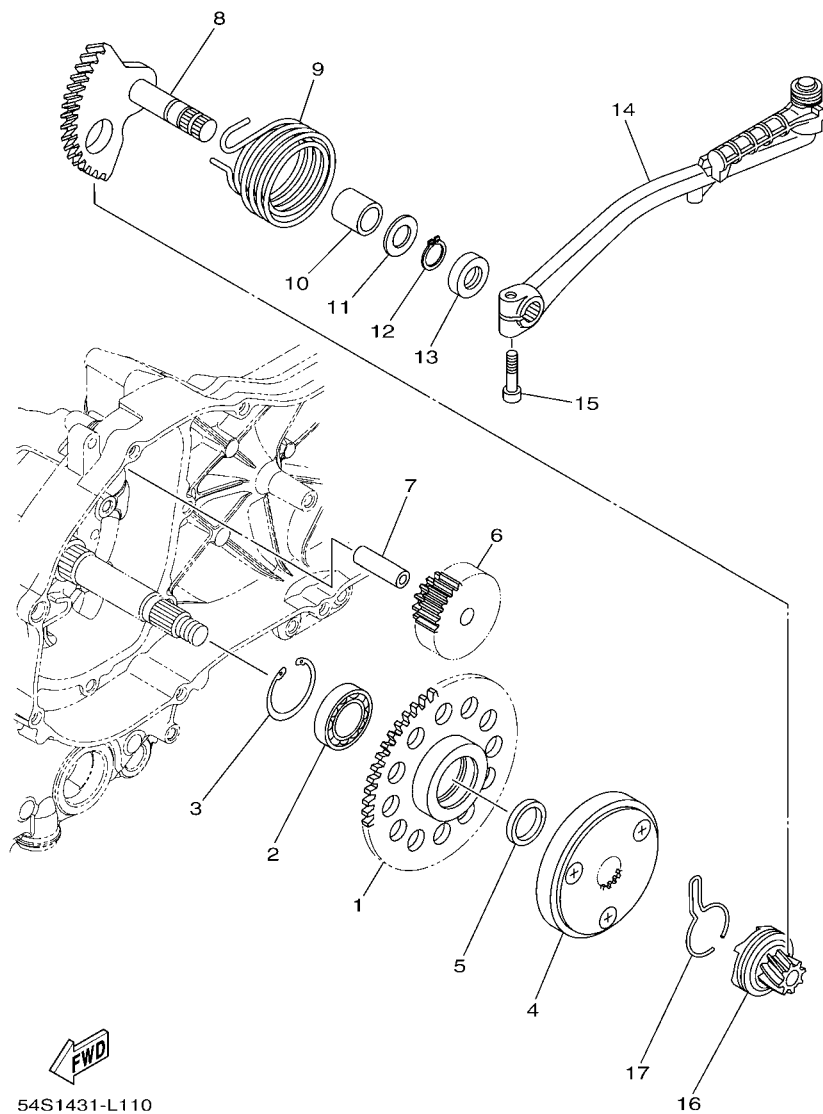


FIG. 11 STARTER

| REF. NO. | PART NO. | DESCRIPTION | 54P1 | 54P2 | 54PA | 54PB | REMARKS |
|----------|--------------|-----------------------|------|------|------|------|---------|
| 1 | 54P-E5524-00 | WHEEL, STARTER | 1 | 1 | 1 | 1 | |
| 2 | 93306-804Y3 | BEARING | 1 | 1 | 1 | 1 | UR |
| | 93306-804Y4 | BEARING | 1 | 1 | 1 | 1 | UR |
| 3 | 93450-32837 | CIRCLIP | 1 | 1 | 1 | 1 | |
| 4 | 54P-E5570-00 | STARTER CLUTCH ASSY | 1 | 1 | 1 | 1 | |
| 5 | 44D-E5598-00 | COLLAR | 1 | 1 | 1 | 1 | |
| 6 | 54P-E5512-00 | GEAR, IDLER 1 | 1 | 1 | 1 | 1 | |
| 7 | 44D-E5521-00 | SHAFT 1 | 1 | 1 | 1 | 1 | |
| 8 | 5TL-E5601-10 | KICK SHAFT ASSY | 1 | 1 | 1 | 1 | |
| 9 | 90508-32768 | SPRING, TORSION | 1 | 1 | 1 | 1 | |
| 10 | 90380-15811 | BUSH, SOLID | 1 | 1 | 1 | 1 | |
| 11 | 90201-154E8 | WASHER, PLATE (T=1.0) | 1 | 1 | 1 | 1 | |
| 12 | 99009-15400 | CIRCLIP | 1 | 1 | 1 | 1 | |
| 13 | 93102-15801 | OIL SEAL | 1 | 1 | 1 | 1 | |
| 14 | 54P-E5620-00 | KICK CRANK ASSY | 1 | 1 | 1 | 1 | |
| 15 | 91312-06025 | BOLT | 1 | 1 | 1 | 1 | |
| 16 | 4VP-E5630-00 | KICK PINION ASSY | 1 | 1 | 1 | 1 | |
| 17 | 5MX-E5673-00 | CLIP | 1 | 1 | 1 | 1 | |
| | | | | | | | |
| | | | | | | | |
| | | | | | | | |
| | | | | | | | |

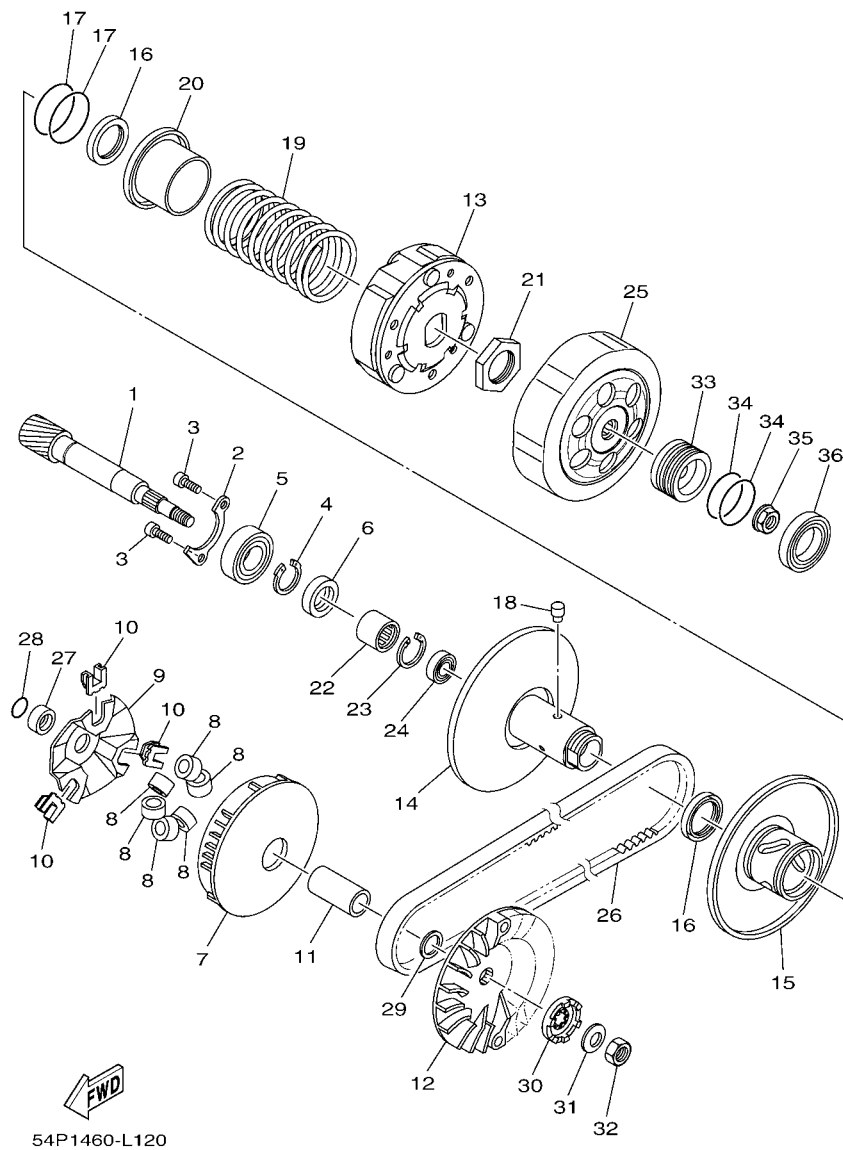


FIG. 12 CLUTCH

| REF. NO. | PART NO. | DESCRIPTION | 54P1 | 54P2 | 54PA | 54PB | REMARKS |
|----------|--------------|------------------------------|------|------|------|------|---------|
| 1 | 54P-E6111-00 | GEAR, PRIMARY DRIVE | 1 | 1 | 1 | 1 | |
| 2 | 54P-E7471-00 | PLATE, COVER | 1 | 1 | 1 | 1 | |
| 3 | 91312-06010 | BOLT | 2 | 2 | 2 | 2 | |
| 4 | 99009-17400 | CIRCLIP | 1 | 1 | 1 | 1 | |
| 5 | 93306-253Y9 | BEARING | 1 | 1 | 1 | 1 | |
| 6 | 93102-17803 | OIL SEAL | 1 | 1 | 1 | 1 | |
| 7 | 54P-E7620-00 | PRIMARY SLIDING SHEAVE COMP. | 1 | 1 | 1 | 1 | |
| 8 | 54P-E7632-00 | WEIGHT | 6 | 6 | 6 | 6 | |
| 9 | 54P-E7623-00 | CAM | 1 | 1 | 1 | 1 | |
| 10 | 54P-E7653-00 | SLIDER | 3 | 3 | 3 | 3 | |
| 11 | 54P-E7674-00 | COLLAR, GUIDE | 1 | 1 | 1 | 1 | |
| 12 | 54P-E7611-00 | SHEAVE, PRIMARY FIXED | 1 | 1 | 1 | 1 | |
| 13 | 54P-E6620-00 | CLUTCH CARRIER ASSY | 1 | 1 | 1 | 1 | |
| 14 | 54P-E7660-00 | SECONDARY FIXED SHEAVE COMP. | 1 | 1 | 1 | 1 | |
| 15 | 54P-E7670-00 | SECONDARY SLIDING SHEAVE | 1 | 1 | 1 | 1 | |
| 16 | 54P-E7465-00 | SEAL | 2 | 2 | 2 | 2 | |
| 17 | 54P-E7465-10 | SEAL | 2 | 2 | 2 | 2 | |
| 18 | 5TL-E7664-00 | PIN, GUIDE | 3 | 3 | 3 | 3 | |
| 19 | 54P-E7683-00 | SPRING, SECONDARY | 1 | 1 | 1 | 1 | |
| 20 | 54P-E7684-00 | SEAT, SECONDARY SPRING | 1 | 1 | 1 | 1 | |
| 21 | 44D-E7668-00 | NUT | 1 | 1 | 1 | 1 | |
| 22 | 54P-E7678-10 | BEARING | 1 | 1 | 1 | 1 | |
| 23 | 44D-E5744-00 | CIRCLIP | 1 | 1 | 1 | 1 | |
| 24 | 54P-E7678-00 | BEARING | 1 | 1 | 1 | 1 | |
| 25 | 54P-E6611-00 | CLUTCH HOUSING COMP. | 1 | 1 | 1 | 1 | |
| 26 | 54P-E7641-00 | V-BELT | 1 | 1 | 1 | 1 | |
| 27 | 44D-E7645-00 | COLLAR | 1 | 1 | 1 | 1 | |

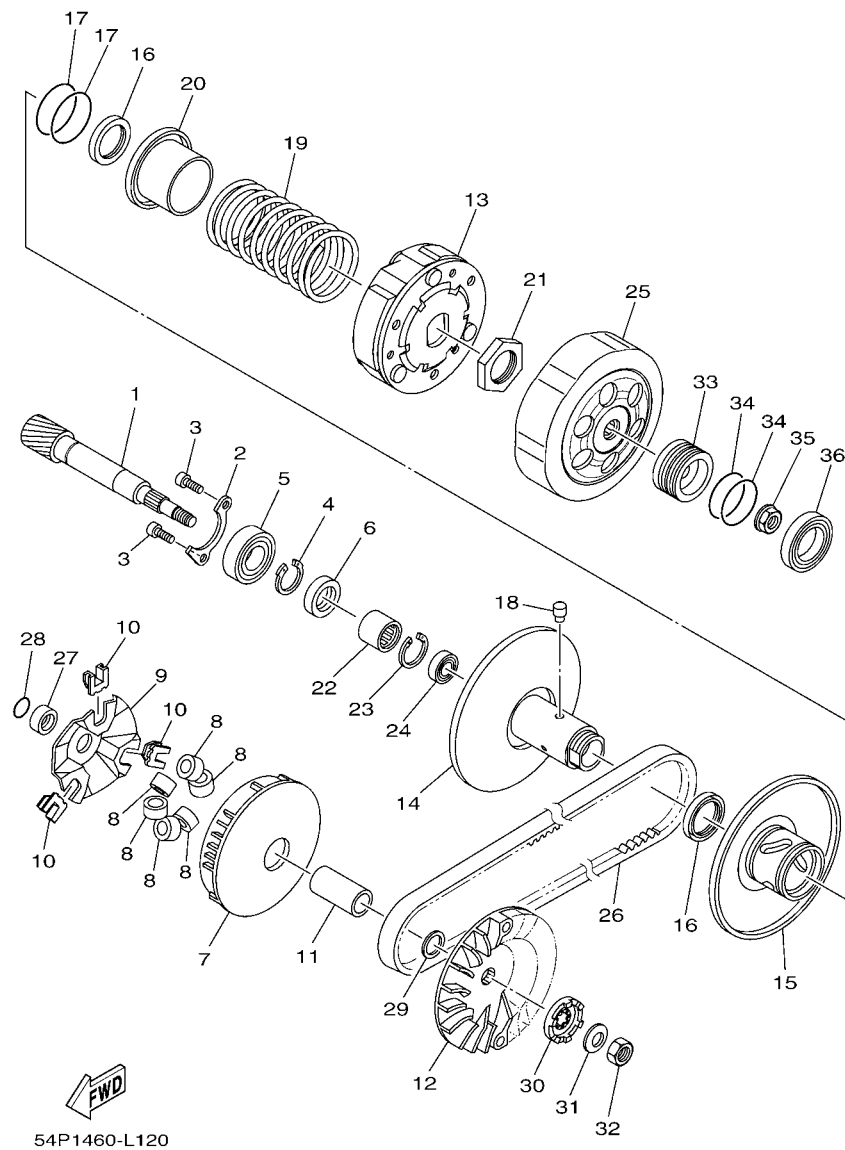


FIG. 12 CLUTCH

[illegible]

[illegible]

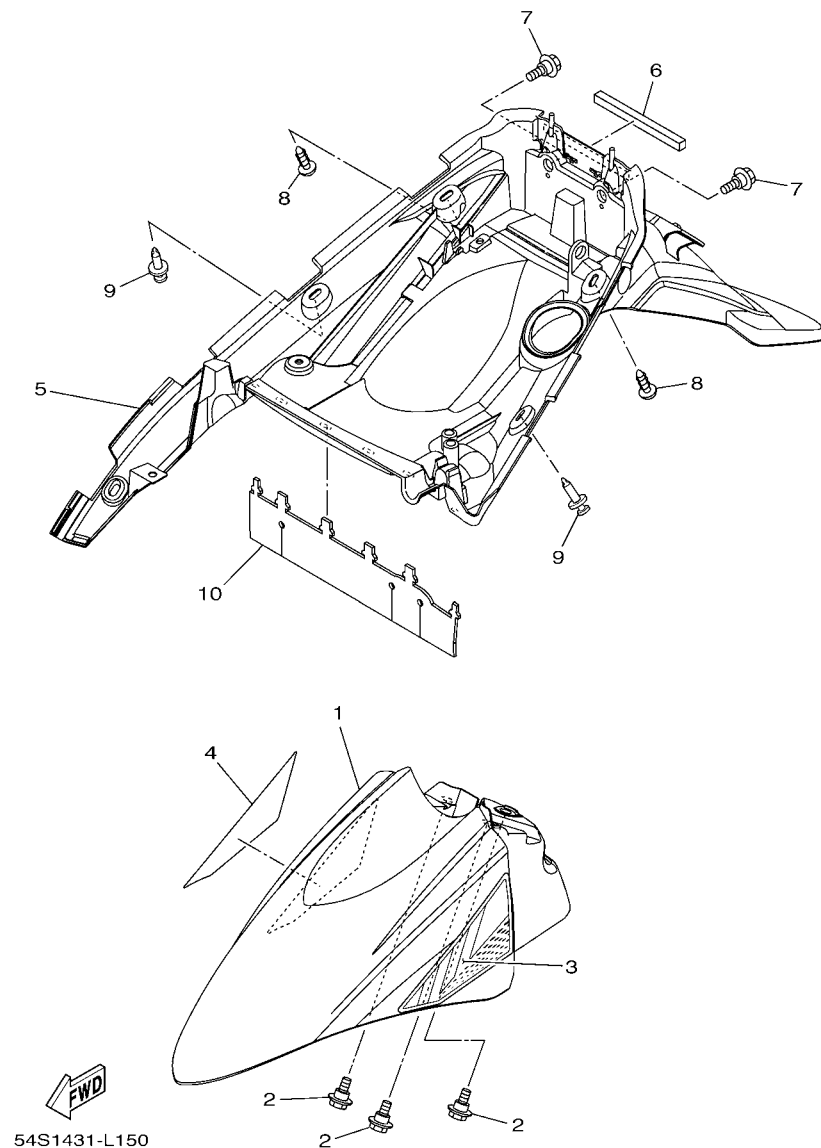


FIG. 15 FENDER

| REF. NO. | PART NO. | DESCRIPTION | 54P1 | 54P2 | 54PA | 54PB | REMARKS |
|----------|-----------------|---------------------------|-------|------|------|------|-------------|
| 1 | 54P-F1511-00-P0 | FENDER, FRONT | 1 | 1 | | | UR FOR RSM2 |
| | 54P-F1511-00-P1 | FENDER, FRONT | 1 | 1 | | | UR FOR RM7 |
| | 54P-F1511-00-P2 | FENDER, FRONT | 1 | 1 | | | UR FOR BMC |
| | 54P-F1511-00-P3 | FENDER, FRONT | 1 | 1 | | | UR FOR WM6 |
| | 54P-F1511-00-P4 | FENDER, FRONT | | 1 | | | UR FOR LGM6 |
| ----- | | | ----- | | | | ----- |
| | 54P-F1511-10-P0 | FENDER, FRONT | | | 1 | | UR FOR RSM2 |
| | 54P-F1511-10-P6 | FENDER, FRONT | | | | 1 | UR FOR SMX |
| | 54P-F1511-10-P1 | FENDER, FRONT | | | 1 | 1 | UR FOR RM7 |
| | 54P-F1511-10-P2 | FENDER, FRONT | | | 1 | 1 | UR FOR BMC |
| | 54P-F1511-10-P3 | FENDER, FRONT | | | 1 | 1 | UR FOR WM6 |
| ----- | | | ----- | | | | ----- |
| | 54P-F1511-10-P4 | FENDER, FRONT | | | 1 | 1 | UR FOR LGM6 |
| 2 | 90109-06202 | BOLT | 3 | 3 | 3 | 3 | |
| 3 | 54P-F1569-30 | GRAPHIC 1 | | | | 1 | UR FOR SMX |
| | 54P-F1569-40 | GRAPHIC 1 | | | | 1 | UR FOR RM7 |
| | 54P-F1569-20 | GRAPHIC 1 | | | | 1 | UR FOR BMC |
| ----- | | | ----- | | | | ----- |
| | 54P-F1569-00 | GRAPHIC 1 | | | | 1 | UR FOR WM6 |
| | 54P-F1569-10 | GRAPHIC 1 | | | | 1 | UR FOR LGM6 |
| 4 | 54P-F1579-30 | GRAPHIC 2 | | | | 1 | UR FOR SMX |
| | 54P-F1579-40 | GRAPHIC 2 | | | | 1 | UR FOR RM7 |
| | 54P-F1579-20 | GRAPHIC 2 | | | | 1 | UR FOR BMC |
| ----- | | | ----- | | | | ----- |
| | 54P-F1579-00 | GRAPHIC 2 | | | | 1 | UR FOR WM6 |
| | 54P-F1579-10 | GRAPHIC 2 | | | | 1 | UR FOR LGM6 |
| 5 | 54P-F1611-00 | FENDER, REAR | 1 | 1 | 1 | 1 | |
| 6 | 90520-08806 | DAMPER, PLATE | 1 | 1 | 1 | 1 | |
| 7 | 90109-06202 | BOLT | 2 | 2 | 2 | 2 | |
| ----- | | | ----- | | | | ----- |
| 8 | 97707-50016 | SCREW, TRUSS HEAD TAPPING | 3 | 3 | 3 | 3 | |
| 9 | 90269-06812 | RIVET | 2 | 2 | 2 | 2 | |

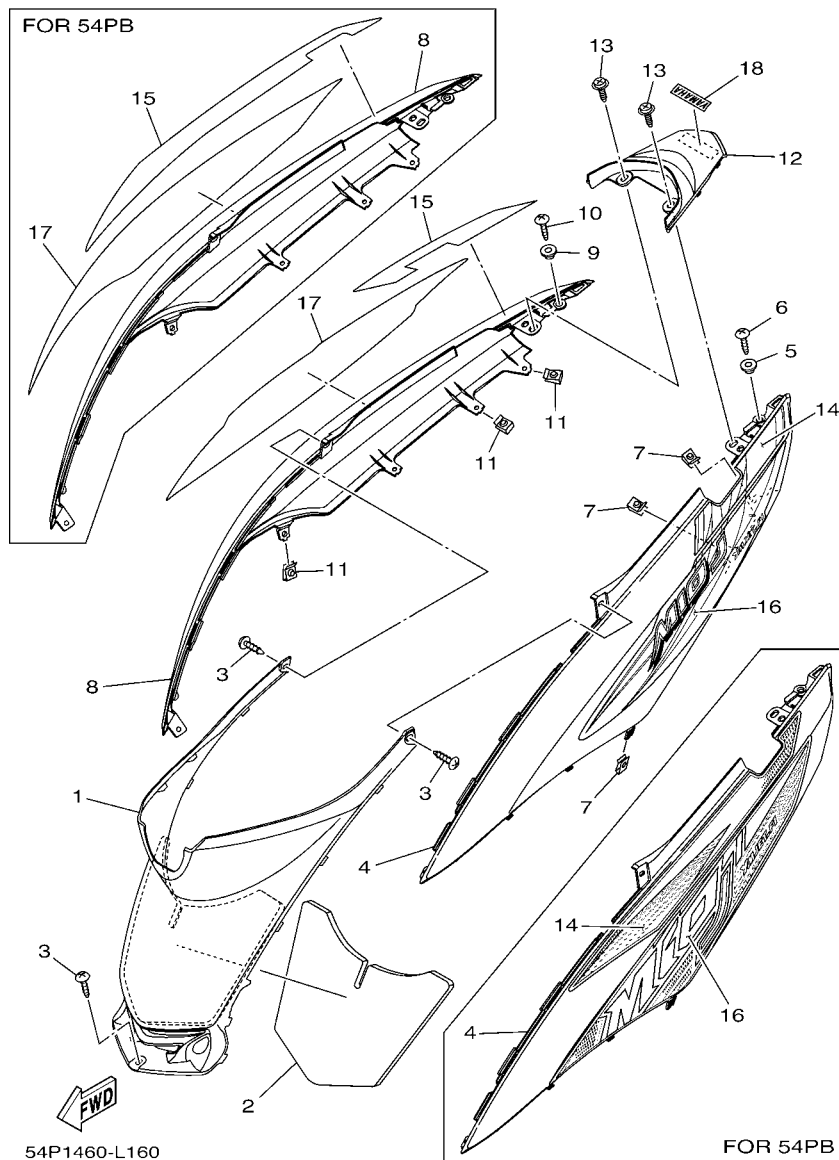


FIG. 16 SIDE COVER

| REF. NO. | PART NO. | DESCRIPTION | 54P1 | 54P2 | 54PA | 54PB | REMARKS |
|----------|-----------------|---------------------------|------|------|------|------|-------------|
| 1 | 54P-F172W-00 | COVER | 1 | 1 | 1 | 1 | |
| 2 | 54P-F1746-00 | DAMPER | 1 | 1 | 1 | 1 | |
| 3 | 97707-50016 | SCREW, TRUSS HEAD TAPPING | 3 | 3 | 3 | 3 | |
| 4 | 54P-F1711-00-P0 | COVER, SIDE 1 | 1 | 1 | | | UR FOR RSM2 |
| | 54P-F1711-00-P1 | COVER, SIDE 1 | 1 | 1 | | | UR FOR RM7 |
| | 54P-F1711-00-P2 | COVER, SIDE 1 | 1 | 1 | | | UR FOR BMC |
| | 54P-F1711-00-P3 | COVER, SIDE 1 | 1 | 1 | | | UR FOR WM6 |
| | 54P-F1711-00-P4 | COVER, SIDE 1 | | 1 | | | UR FOR LGM6 |
| | 54P-F1711-10-P0 | COVER, SIDE 1 | | | 1 | | UR FOR RSM2 |
| | 54P-F1711-10-P6 | COVER, SIDE 1 | | | | 1 | UR FOR SMX |
| | 54P-F1711-10-P1 | COVER, SIDE 1 | | | 1 | 1 | UR FOR RM7 |
| | 54P-F1711-10-P2 | COVER, SIDE 1 | | | 1 | 1 | UR FOR BMC |
| | 54P-F1711-10-P3 | COVER, SIDE 1 | | | 1 | 1 | UR FOR WM6 |
| | 54P-F1711-10-P4 | COVER, SIDE 1 | | | 1 | 1 | UR FOR LGM6 |
| 5 | 90387-05820 | COLLAR | 1 | 1 | 1 | 1 | |
| 6 | 97707-50016 | SCREW, TRUSS HEAD TAPPING | 2 | 2 | 2 | 2 | |
| 7 | 90183-05807 | NUT, SPRING | 3 | 3 | 3 | 3 | |
| 8 | 54P-F1721-00-P0 | COVER, SIDE 2 | 1 | 1 | | | UR FOR RSM2 |
| | 54P-F1721-00-P1 | COVER, SIDE 2 | 1 | 1 | | | UR FOR RM7 |
| | 54P-F1721-00-P2 | COVER, SIDE 2 | 1 | 1 | | | UR FOR BMC |
| | 54P-F1721-00-P3 | COVER, SIDE 2 | 1 | 1 | | | UR FOR WM6 |
| | 54P-F1721-00-P4 | COVER, SIDE 2 | | 1 | | | UR FOR LGM6 |
| | 54P-F1721-10-P0 | COVER, SIDE 2 | | | 1 | | UR FOR RSM2 |
| | 54P-F1721-10-P6 | COVER, SIDE 2 | | | | 1 | UR FOR SMX |
| | 54P-F1721-10-P1 | COVER, SIDE 2 | | | 1 | 1 | UR FOR RM7 |
| | 54P-F1721-10-P2 | COVER, SIDE 2 | | | 1 | 1 | UR FOR BMC |
| | 54P-F1721-10-P3 | COVER, SIDE 2 | | | 1 | 1 | UR FOR WM6 |

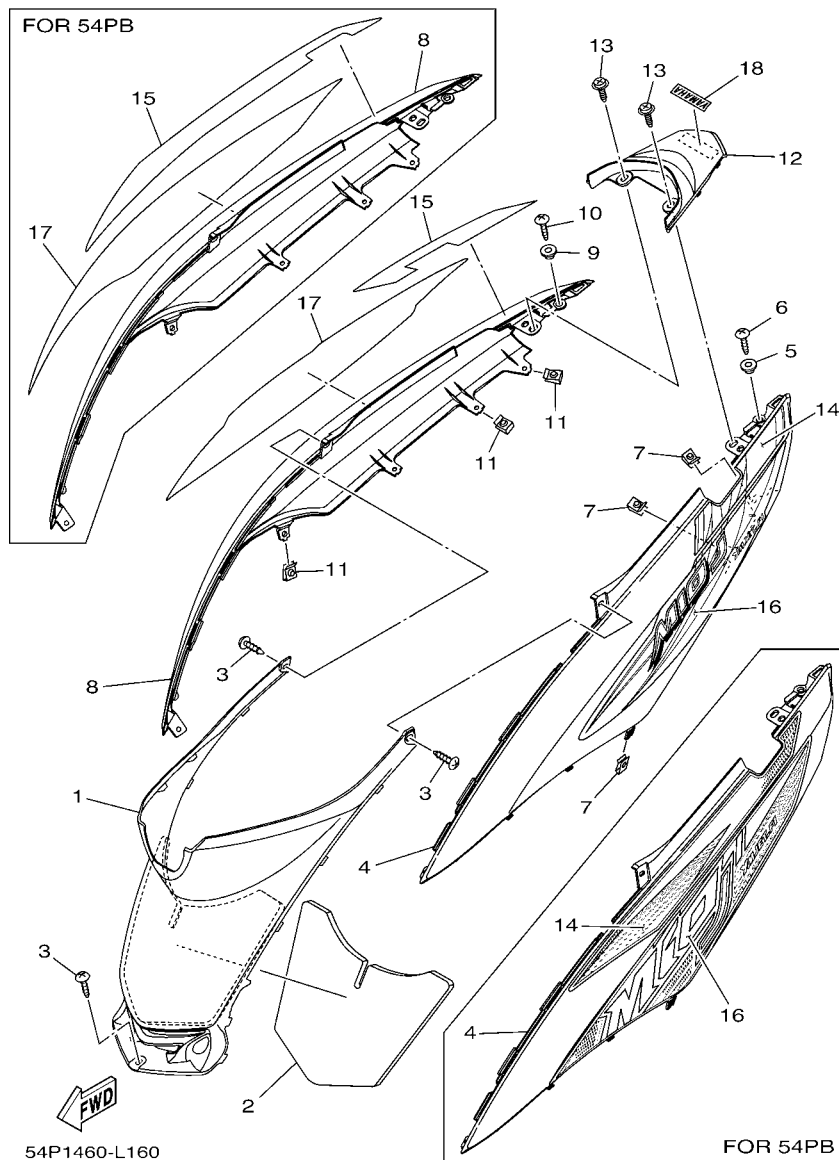


FIG. 16 SIDE COVER

| REF. NO. | PART NO. | DESCRIPTION | 54P1 | 54P2 | 54PA | 54PB | REMARKS |
|----------|-----------------|---------------------------|------|------|------|------|-------------|
| 8 | 54P-F1721-10-P4 | COVER, SIDE 2 | | | 1 | 1 | UR FOR LGM6 |
| 9 | 90387-05820 | COLLAR | 1 | 1 | 1 | 1 | |
| 10 | 97707-50016 | SCREW, TRUSS HEAD TAPPING | 2 | 2 | 2 | 2 | |
| 11 | 90183-05807 | NUT, SPRING | 3 | 3 | 3 | 3 | |
| 12 | 54P-F1731-00-P0 | COVER, SIDE 3 | 1 | 1 | | | UR FOR RSM2 |
| --- | 54P-F1731-00-P1 | COVER, SIDE 3 | 1 | 1 | | | UR FOR RM7 |
| --- | 54P-F1731-00-P2 | COVER, SIDE 3 | 1 | 1 | | | UR FOR BMC |
| --- | 54P-F1731-00-P3 | COVER, SIDE 3 | 1 | 1 | | | UR FOR WM6 |
| --- | 54P-F1731-00-P4 | COVER, SIDE 3 | | 1 | | | UR FOR LGM6 |
| --- | 54P-F1731-10-P0 | COVER, SIDE 3 | | | 1 | | UR FOR RSM2 |
| --- | 54P-F1731-10-P6 | COVER, SIDE 3 | | | | 1 | UR FOR SMX |
| --- | 54P-F1731-10-P1 | COVER, SIDE 3 | | | 1 | 1 | UR FOR RM7 |
| --- | 54P-F1731-10-P2 | COVER, SIDE 3 | | | 1 | 1 | UR FOR BMC |
| --- | 54P-F1731-10-P3 | COVER, SIDE 3 | | | 1 | 1 | UR FOR WM6 |
| --- | 54P-F1731-10-P4 | COVER, SIDE 3 | | | 1 | 1 | UR FOR LGM6 |
| 13 | 90159-06810 | SCREW, WITH WASHER | 2 | 2 | 2 | 2 | |
| 14 | 54P-F173E-00 | GRAPHIC 1 | 1 | 1 | 1 | | UR FOR RSM2 |
| --- | 54P-F173E-10 | GRAPHIC 1 | 1 | 1 | 1 | | UR FOR RM7 |
| --- | 54P-F173E-20 | GRAPHIC 1 | 1 | 1 | 1 | | UR FOR BMC |
| --- | 54P-F173E-30 | GRAPHIC 1 | 1 | 1 | 1 | | UR FOR WM6 |
| --- | 54P-F173E-40 | GRAPHIC 1 | | 1 | 1 | | UR FOR LGM6 |
| --- | 54P-F173E-90 | GRAPHIC 1 | | | | 1 | UR FOR SMX |
| --- | 54P-F173E-A0 | GRAPHIC 1 | | | | 1 | UR FOR RM7 |
| --- | 54P-F173E-80 | GRAPHIC 1 | | | | 1 | UR FOR BMC |
| --- | 54P-F173E-60 | GRAPHIC 1 | | | | 1 | UR FOR WM6 |
| --- | 54P-F173E-70 | GRAPHIC 1 | | | | 1 | UR FOR LGM6 |
| 15 | 54P-F173F-00 | GRAPHIC 2 | 1 | 1 | 1 | | UR FOR RSM2 |

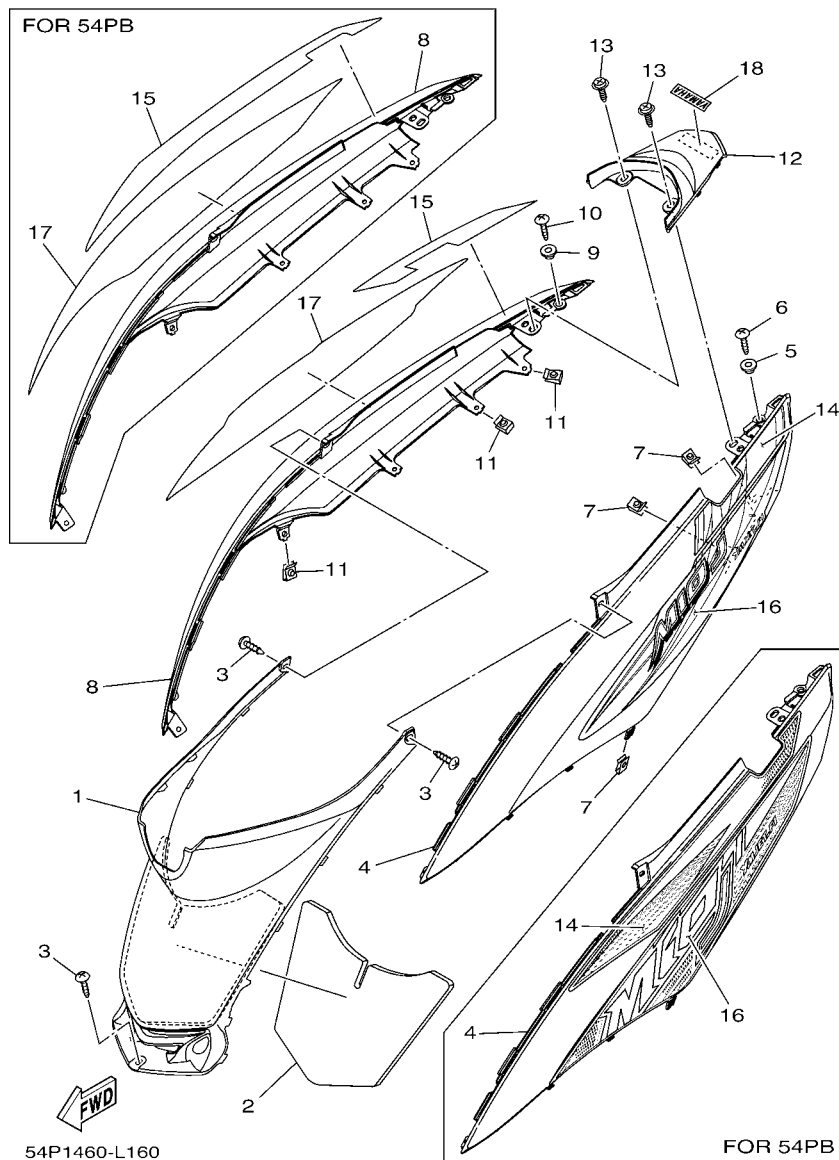
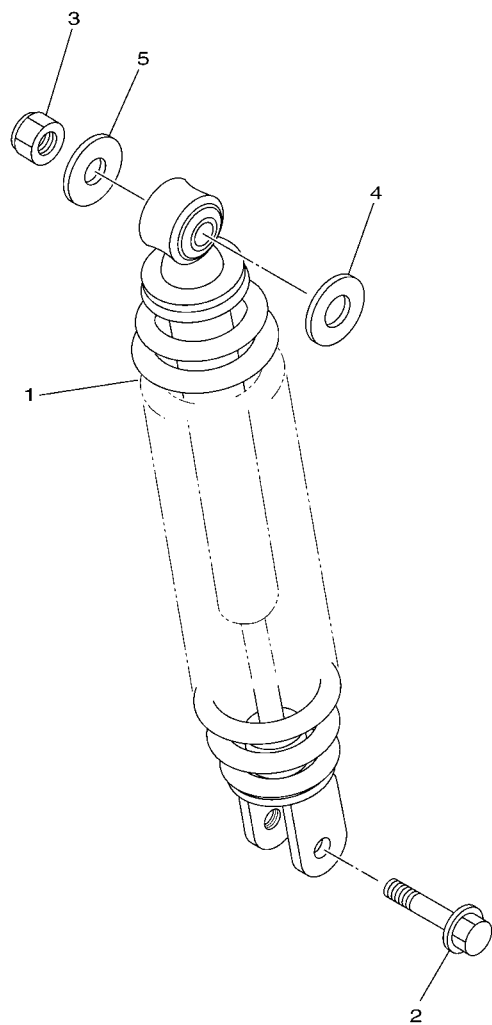


FIG. 16 SIDE COVER

| REF. NO. | PART NO. | DESCRIPTION | 54P1 | 54P2 | 54PA | 54PB | REMARKS |
|----------|--------------|-------------|------|------|------|------|-------------|
| 15 | 54P-F173F-10 | GRAPHIC 2 | 1 | 1 | 1 | | UR FOR RM7 |
| | 54P-F173F-20 | GRAPHIC 2 | 1 | 1 | 1 | | UR FOR BMC |
| | 54P-F173F-30 | GRAPHIC 2 | 1 | 1 | 1 | | UR FOR WM6 |
| | 54P-F173F-40 | GRAPHIC 2 | | | 1 | 1 | UR FOR LGM6 |
| | 54P-F173F-90 | GRAPHIC 2 | | | | 1 | UR FOR SMX |
| --- | 54P-F173F-A0 | GRAPHIC 2 | | | | 1 | UR FOR RM7 |
| | 54P-F173F-80 | GRAPHIC 2 | | | | 1 | UR FOR BMC |
| | 54P-F173F-60 | GRAPHIC 2 | | | | 1 | UR FOR WM6 |
| | 54P-F173F-70 | GRAPHIC 2 | | | | 1 | UR FOR LGM6 |
| 16 | 54P-F174G-00 | GRAPHIC 3 | 1 | 1 | 1 | | UR FOR RSM2 |
| --- | 54P-F174G-10 | GRAPHIC 3 | 1 | 1 | 1 | | UR FOR RM7 |
| | 54P-F174G-20 | GRAPHIC 3 | 1 | 1 | 1 | | UR FOR BMC |
| | 54P-F174G-30 | GRAPHIC 3 | 1 | 1 | 1 | | UR FOR WM6 |
| | 54P-F174G-40 | GRAPHIC 3 | | | 1 | 1 | UR FOR LGM6 |
| | 54P-F174G-90 | GRAPHIC 3 | | | | 1 | UR FOR SMX |
| --- | 54P-F174G-A0 | GRAPHIC 3 | | | | 1 | UR FOR RM7 |
| | 54P-F174G-80 | GRAPHIC 3 | | | | 1 | UR FOR BMC |
| | 54P-F174G-60 | GRAPHIC 3 | | | | 1 | UR FOR WM6 |
| | 54P-F174G-70 | GRAPHIC 3 | | | | 1 | UR FOR LGM6 |
| 17 | 54P-F174H-00 | GRAPHIC 4 | 1 | 1 | 1 | | UR FOR RSM2 |
| --- | 54P-F174H-10 | GRAPHIC 4 | 1 | 1 | 1 | | UR FOR RM7 |
| | 54P-F174H-20 | GRAPHIC 4 | 1 | 1 | 1 | | UR FOR BMC |
| | 54P-F174H-30 | GRAPHIC 4 | 1 | 1 | 1 | | UR FOR WM6 |
| | 54P-F174H-40 | GRAPHIC 4 | | | 1 | 1 | UR FOR LGM6 |
| | 54P-F174H-90 | GRAPHIC 4 | | | | 1 | UR FOR SMX |
| --- | 54P-F174H-A0 | GRAPHIC 4 | | | | 1 | UR FOR RM7 |
| | 54P-F174H-80 | GRAPHIC 4 | | | | 1 | UR FOR BMC |




 54S1431-L170

FIG. 17 REAR ARM & SUSPENSION

| REF. NO. | PART NO. | DESCRIPTION | 54P1 | 54P2 | 54PA | 54PB | REMARKS |
|----------|--------------|---------------------------|------|------|------|------|---------|
| 1 | 54P-F2210-00 | SHOCK ABSORBER ASSY, REAR | 1 | 1 | 1 | | |
| | 54P-F2210-10 | SHOCK ABSORBER ASSY, REAR | | | | 1 | |
| 2 | 90105-08861 | BOLT, FLANGE | 1 | 1 | 1 | 1 | |
| 3 | 95302-10600 | NUT | 1 | 1 | 1 | 1 | |
| 4 | 90201-12028 | WASHER, PLATE | 1 | 1 | 1 | 1 | |
| 5 | 90201-10065 | WASHER, PLATE | 1 | 1 | 1 | 1 | |
| ----- | | | | | | | |
| | | | | | | | |
| ----- | | | | | | | |
| | | | | | | | |
| ----- | | | | | | | |
| | | | | | | | |
| ----- | | | | | | | |
| | | | | | | | |
| ----- | | | | | | | |
| | | | | | | | |
| ----- | | | | | | | |
| | | | | | | | |
| ----- | | | | | | | |
| | | | | | | | |
| ----- | | | | | | | |
| | | | | | | | |
| ----- | | | | | | | |
| | | | | | | | |
| ----- | | | | | | | |
| | | | | | | | |
| ----- | | | | | | | |
| | | | | | | | |
| ----- | | | | | | | |
| | | | | | | | |
| ----- | | | | | | | |
| | | | | | | | |
| ----- | | | | | | | |
| | | | | | | | |
| ----- | | | | | | | |
| | | | | | | | |
| ----- | | | | | | | |
| | | | | | | | |
| ----- | | | | | | | |
| | | | | | | | |
| ----- | | | | | | | |
| | | | | | | | |
| ----- | | | | | | | |
| | | | | | | | |
| ----- | | | | | | | |
| | | | | | | | |
| ----- | | | | | | | |
| | | | | | | | |
| ----- | | | | | | | |
| | | | | | | | |
| ----- | | | | | | | |
| | | | | | | | |
| ----- | | | | | | | |
| | | | | | | | |
| ----- | | | | | | | |
| | | | | | | | |
| ----- | | | | | | | |
| | | | | | | | |
| ----- | | | | | | | |
| | | | | | | | |
| ----- | | | | | | | |
| | | | | | | | |
| ----- | | | | | | | |
| | | | | | | | |
| ----- | | | | | | | |
| | | | | | | | |
| ----- | | | | | | | |
| | | | | | | | |
| ----- | | | | | | | |
| | | | | | | | |
| ----- | | | | | | | |
| | | | | | | | |
| ----- | | | | | | | |
| | | | | | | | |
| ----- | | | | | | | |
| | | | | | | | |
| ----- | | | | | | | |
| | | | | | | | |
| ----- | | | | | | | |
| | | | | | | | |
| ----- | | | | | | | |
| | | | | | | | |
| ----- | | | | | | | |
| | | | | | | | |
| ----- | | | | | | | |
| | | | | | | | |
| ----- | | | | | | | |
| | | | | | | | |
| ----- | | | | | | | |
| | | | | | | | |
| ----- | | | | | | | |
| | | | | | | | |
| ----- | | | | | | | |
| | | | | | | | |
| ----- | | | | | | | |
| | | | | | | | |
| ----- | | | | | | | |
| | | | | | | | |
| ----- | | | | | | | |
| | | | | | | | |
| ----- | | | | | | | |
| | | | | | | | |
| ----- | | | | | | | |
| | | | | | | | |
| ----- | | | | | | | |
| | | | | | | | |
| ----- | | | | | | | |
| | | | | | | | |
| ----- | | | | | | | |
| | | | | | | | |
| ----- | | | | | | | |
| | | | | | | | |
| ----- | | | | | | | |
| | | | | | | | |
| ----- | | | | | | | |
| | | | | | | | |
| ----- | | | | | | | |
| | | | | | | | |
| ----- | | | | | | | |
| | | | | | | | |
| ----- | | | | | | | |
| | | | | | | | |
| ----- | | | | | | | |
| | | | | | | | |
| ----- | | | | | | | |
| | | | | | | | |
| ----- | | | | | | | |
| | | | | | | | |
| ----- | | | | | | | |
| | | | | | | | |
| ----- | | | | | | | |
| | | | | | | | |
| ----- | | | | | | | |
| | | | | | | | |
| ----- | | | | | | | |
| | | | | | | | |
| ----- | | | | | | | |
| | | | | | | | |
| ----- | | | | | | | |
| | | | | | | | |
| ----- | | | | | | | |
| | | | | | | | |
| ----- | | | | | | | |
| | | | | | | | |
| ----- | | | | | | | |
| | | | | | | | |
| ----- | | | | | | | |
| | | | | | | | |
| ----- | | | | | | | |
| | | | | | | | |
| ----- | | | | | | | |
| | | | | | | | |
| ----- | | | | | | | |
| | | | | | | | |
| ----- | | | | | | | |
| | | | | | | | |
| ----- | | | | | | | |
| | | | | | | | |
| ----- | | | | | | | |
| | | | | | | | |
| ----- | | | | | | | |
| | | | | | | | |
| ----- | | | | | | | |
| | | | | | | | |
| ----- | | | | | | | |
| | | | | | | | |
| ----- | | | | | | | |
| | | | | | | | |
| ----- | | | | | | | |
| | | | | | | | |
| ----- | | | | | | | |
| | | | | | | | |
| ----- | | | | | | | |
| | | | | | | | |
| ----- | | | | | | | |
| | | | | | | | |
| ----- | | | | | | | |
| | | | | | | | |
| ----- | | | | | | | |
| | | | | | | | |
| ----- | | | | | | | |
| | | | | | | | |
| ----- | | | | | | | |
| | | | | | | | |
| ----- | | | | | | | |
| | | | | | | | |
| ----- | | | | | | | |
| | | | | | | | |
| ----- | | | | | | | |
| | | | | | | | |
| ----- | | | | | | | |
| | | | | | | | |
| ----- | | | | | | | |
| | | | | | | | |
| ----- | | | | | | | |
| | | | | | | | |
| ----- | | | | | | | |
| | | | | | | | |
| ----- | | | | | | | |
| | | | | | | | |
| ----- | | | | | | | |
| | | | | | | | |
| ----- | | | | | | | |
| | | | | | | | |
| ----- | | | | | | | |
| | | | | | | | |
| ----- | | | | | | | |
| | | | | | | | |
| ----- | | | | | | | |
| | | | | | | | |
| ----- | | | | | | | |
| | | | | | | | |
| ----- | | | | | | | |
| | | | | | | | |
| ----- | | | | | | | |
| | | | | | | | |
| ----- | | | | | | | |
| | | | | | | | |
| ----- | | | | | | | |
| | | | | | | | |
| ----- | | | | | | | |
| | | | | | | | |
| ----- | | | | | | | |
| | | | | | | | |
| ----- | | | | | | | |
| | | | | | | | |
| ----- | | | | | | | |
| | | | | | | | |
| ----- | | | | | | | |
| | | | | | | | |
| ----- | | | | | | | |
| | | | | | | | |
| ----- | | | | | | | |
| | | | | | | | |
| ----- | | | | | | | |
| | | | | | | | |
| ----- | | | | | | | |
| | | | | | | | |
| ----- | | | | | | | |
| | | | | | | | |
| ----- | | | | | | | |
| | | | | | | | |
| ----- | | | | | | | |
| | | | | | | | |
| ----- | | | | | | | |
| | | | | | | | |
| ----- | | | | | | | |
| | | | | | | | |
| ----- | | | | | | | |
| | | | | | | | |
| ----- | | | | | | | |
| | | | | | | | |
| ----- | | | | | | | |
| | | | | | | | |
| ----- | | | | | | | |
| | | | | | | | |
| ----- | | | | | | | |
| | | | | | | | |
| ----- | | | | | | | |
| | | | | | | | |
| ----- | | | | | | | |
| | | | | | | | |
| ----- | | | | | | | |
| | | | | | | | |
| ----- | | | | | | | |
| | | | | | | | |
| ----- | | | | | | | |
| | | | | | | | |
| ----- | | | | | | | |
| | | | | | | | |
| ----- | | | | | | | |
| | | | | | | | |
| ----- | | | | | | | |
| | | | | | | | |
| ----- | | | | | | | |
| | | | | | | | |
| ----- | | | | | | | |
| | | | | | | | |
| ----- | | | | | | | |
| | | | | | | | |
| ----- | | | | | | | |
| | | | | | | | |
| ----- | | | | | | | |
| | | | | | | | |
| ----- | | | | | | | |
| | | | | | | | |
| ----- | | | | | | | |
| | | | | | | | |
| ----- | | | | | | | |
| | | | | | | | |
| ----- | | | | | | | |
| | | | | | | | |
| ----- | | | | | | | |
| | | | | | | | |
| ----- | | | | | | | |
| | | | | | | | |
| ----- | | | | | | | |
| | | | | | | | |
| ----- | | | | | | | |
| | | | | | | | |
| ----- | | | | | | | |
| | | | | | | | |
| ----- | | | | | | | |
| | | | | | | | |
| ----- | | | | | | | |
| | | | | | | | |
| ----- | | | | | | | |
| | | | | | | | |
| ----- | | | | | | | |
| | | | | | | | |
| ----- | | | | | | | |
| | | | | | | | |
| ----- | | | | | | | |
| | | | | | | | |
| ----- | | | | | | | |
| | | | | | | | |
| ----- | | | | | | | |
| | | | | | | | |
| ----- | | | | | | | |
| | | | | | | | |
| ----- | | | | | | | |
| | | | | | | | |
| ----- | | | | | | | |
| | | | | | | | |
| ----- | | | | | | | |
| | | | | | | | |
| ----- | | | | | | | |
| | | | | | | | |
| ----- | | | | | | | |
| | | | | | | | |
| ----- | | | | | | | |
| | | | | | | | |
| ----- | | | | | | | |
| | | | | | | | |
| ----- | | | | | | | |
| | | | | | | | |
| ----- | | | | | | | |
| | | | | | | | |
| ----- | | | | | | | |
| | | | | | | | |
| ----- | | | | | | | |
| | | | | | | | |
| ----- | | | | | | | |
| | | | | | | | |
| ----- | | | | | | | |
| | | | | | | | |
| ----- | | | | | | | |
| | | | | | | | |
| ----- | | | | | | | |
| | | | | | | | |
| ----- | | | | | | | |
| | | | | | | | |
| ----- | | | | | | | |
| | | | | | | | |
| ----- | | | | | | | |
| | | | | | | | |
| ----- | | | | | | | |
| | | | | | | | |
| ----- | | | | | | | |
| | | | | | | | |
| ----- | | | | | | | |
| | | | | | | | |
| ----- | | | | | | | |
| | | | | | | | |
| ----- | | | | | | | |
| | | | | | | | |
| ----- | | | | | | | |
| | | | | | | | |
| ----- | | | | | | | |
| | | | | | | | |
| ----- | | | | | | | |
| | | | | | | | |
| ----- | | | | | | | |
| | | | | | | | |
| ----- | | | | | | | |
| | | | | | | | |
| ----- | | | | | | | |
| | | | | | | | |
| ----- | | | | | | | |
| | | | | | | | |
| ----- | | | | | | | |
| | | | | | | | |
| ----- | | | | | | | |
| | | | | | | | |
| ----- | | | | | | | |
| | | | | | | | |
| ----- | | | | | | | |
| | | | | | | | |
| ----- | | | | | | | |
| | | | | | | | |
| ----- | | | | | | | |
| | | | | | | | |
| ----- | | | | | | | |
| | | | | | | | |
| ----- | | | | | | | |
| | | | | | | | |
| ----- | | | | | | | |
| | | | | | | | |
| ----- | | | | | | | |
| | | | | | | | |
| ----- | | | | | | | |
| | | | | | | | |
| ----- | | | | | | | |
| | | | | | | | |
| ----- | | | | | | | |
| | | | | | | | |
| ----- | | | | | | | |
| | | | | | | | |
| ----- | | | | | | | |
| | | | | | | | |
| ----- | | | | | | | |
| | | | | | | | |
| ----- | | | | | | | |
| | | | | | | | |
| ----- | | | | | | | |
| | | | | | | | |
| ----- | | | | | | | |
| | | | | | | | |
| ----- | | | | | | | |
| | | | | | | | |
| ----- | | | | | | | |
| | | | | | | | |
| ----- | | | | | | | |

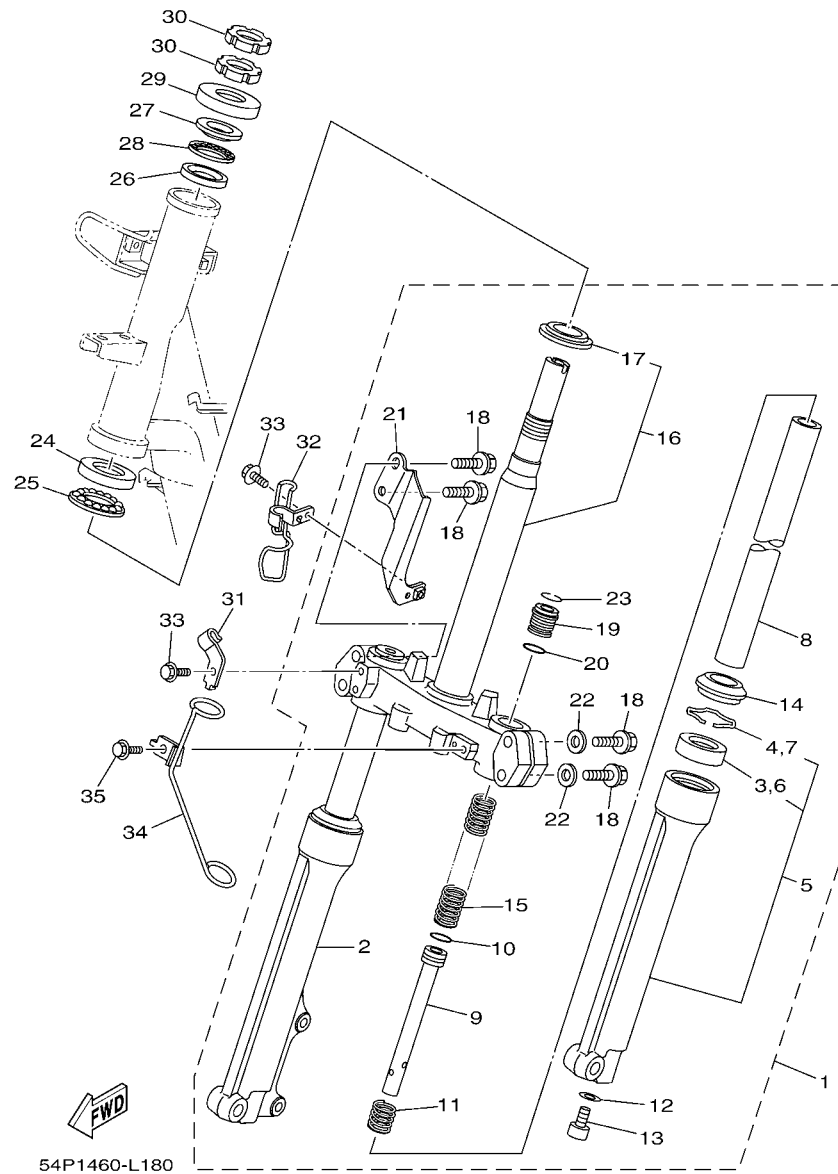


FIG. 18 STEERING

| REF. NO. | PART NO. | DESCRIPTION | 54P1 | 54P2 | 54PA | 54PB | REMARKS |
|----------|--------------|-----------------------------|------|------|------|------|---------|
| 1 | 54P-F3100-00 | FRONT FORK ASSY | 1 | 1 | 1 | 1 | |
| 2 | 54P-F3136-00 | .TUBE, OUTER (RIGHT) | 1 | 1 | 1 | 1 | |
| 3 | 3AY-F3145-00 | ..OIL SEAL | 1 | 1 | 1 | 1 | |
| 4 | 5P0-F3156-00 | ..RING, SNAP | 1 | 1 | 1 | 1 | |
| 5 | 54P-F3126-00 | .TUBE, OUTER (LEFT) | 1 | 1 | 1 | 1 | |
| 6 | 3AY-F3145-00 | ..OIL SEAL | 1 | 1 | 1 | 1 | |
| 7 | 5P0-F3156-00 | ..RING, SNAP | 1 | 1 | 1 | 1 | |
| 8 | 28D-F3110-00 | .INNER TUBE COMP.1 | 2 | 2 | 2 | 2 | |
| 9 | 28D-F3170-00 | .CYLINDER COMP., FRONT FORK | 2 | 2 | 2 | 2 | |
| 10 | 2JG-F3157-00 | .RING, PISTON | 2 | 2 | 2 | 2 | |
| 11 | 5D9-F3152-00 | .SPRING, SUB | 2 | 2 | 2 | 2 | |
| 12 | 509-F3158-L0 | .GASKET | 2 | 2 | 2 | 2 | |
| 13 | 278-F3181-50 | .BOLT, HEXAGON SOCKET HEAD | 2 | 2 | 2 | 2 | |
| 14 | 5LM-F3144-00 | .SEAL, DUST | 2 | 2 | 2 | 2 | |
| 15 | 28D-F3141-00 | .SPRING, FRONT FORK | 2 | 2 | 2 | 2 | |
| 16 | 28D-F3340-00 | ..UNDER BRACKET COMP. | 1 | 1 | 1 | 1 | |
| 17 | 18G-23411-00 | ..RACE, BALL 1 | 1 | 1 | 1 | 1 | |
| 18 | 4D0-F3346-00 | .BOLT 1 | 4 | 4 | 4 | 4 | |
| 19 | 28D-F3111-00 | .BOLT, CAP | 2 | 2 | 2 | 2 | |
| 20 | 2JG-F3147-00 | .O-RING | 2 | 2 | 2 | 2 | |
| 21 | 54P-F334G-00 | .BRACKET 1 | 1 | 1 | 1 | 1 | |
| 22 | 4D0-F3165-00 | .WASHER, FELT | 2 | 2 | 2 | 2 | |
| 23 | 5P0-F3153-00 | .RING, SNAP | 1 | 1 | 1 | 1 | |
| 24 | 28D-F3412-00 | RACE, BALL 2 | 1 | 1 | 1 | 1 | |
| 25 | 5TL-2341E-00 | RETAINER, BALL BEARING (16) | 1 | 1 | 1 | 1 | |
| 26 | 54P-F3412-00 | RACE, BALL 2 | 1 | 1 | 1 | 1 | |
| 27 | 54P-F3411-00 | RACE, BALL 1 | 1 | 1 | 1 | 1 | |

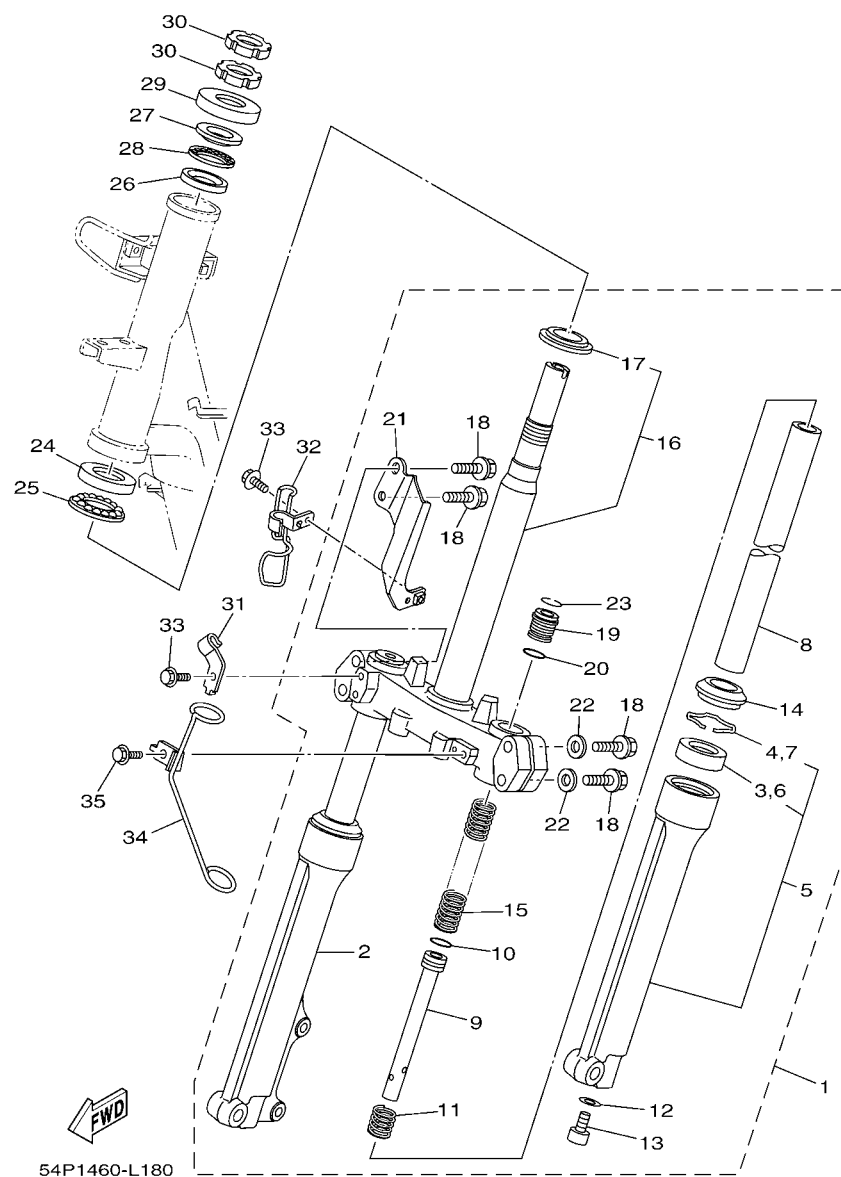


FIG. 18 STEERING

[illegible]

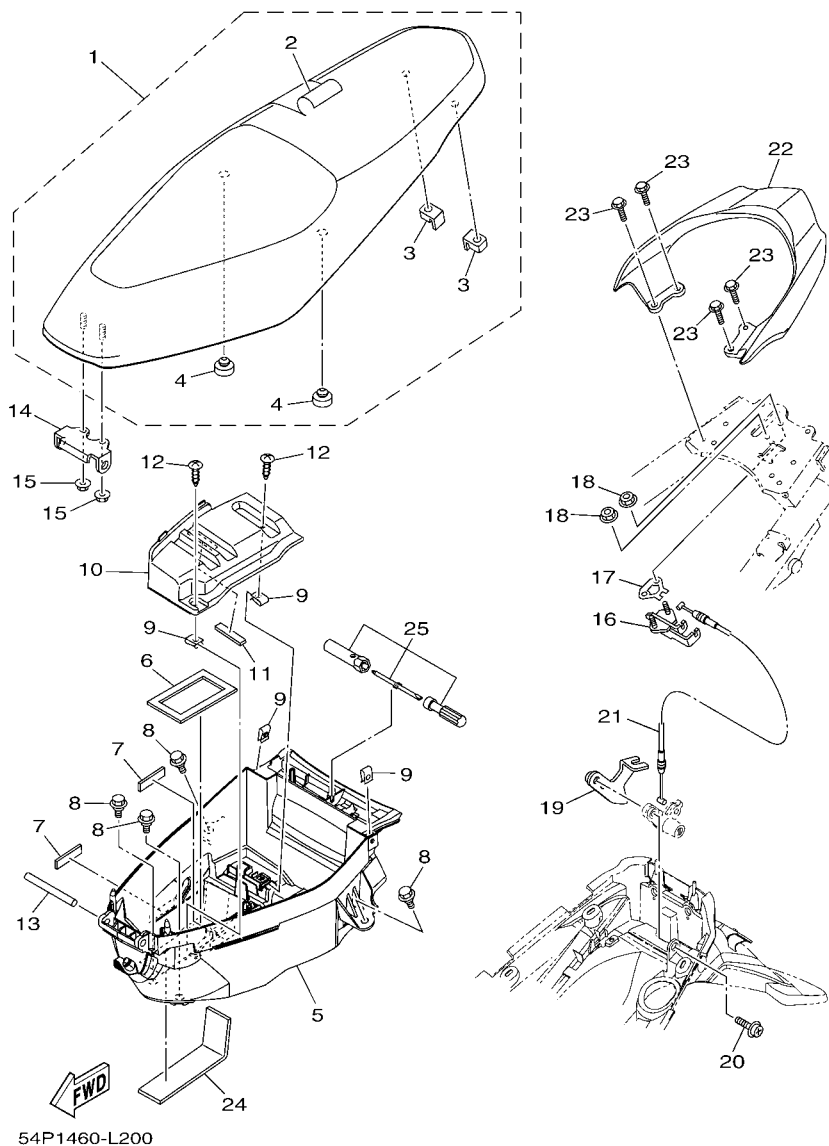


FIG. 20 SEAT

| REF. NO. | PART NO. | DESCRIPTION | 54P1 | 54P2 | 54PA | 54PB | REMARKS |
|----------|-----------------|---------------------------|------|------|------|------|---------|
| 1 | 54P-F4730-00 | DOUBLE SEAT ASSY | 1 | 1 | 1 | 1 | |
| 2 | 54P-F470F-00 | .SEAT COVER COMP. | 1 | 1 | 1 | 1 | |
| 3 | 5TL-F4741-00 | .PAD, SEAT | 2 | 2 | 2 | 2 | |
| 4 | 3C1-F4741-00 | .PAD, SEAT | 2 | 2 | 2 | 2 | |
| 5 | 54P-F4704-00 | BOX ASSY | 1 | 1 | 1 | 1 | |
| 6 | 1KP-H2176-00 | DAMPER | 1 | 1 | 1 | 1 | |
| 7 | 90520-03806 | DAMPER, PLATE | 2 | 2 | 2 | 2 | |
| 8 | 90109-06202 | BOLT | 4 | 4 | 4 | 4 | |
| 9 | 90183-05807 | NUT, SPRING | 4 | 4 | 4 | 4 | |
| 10 | 54P-H2129-00 | COVER, BATTERY | 1 | 1 | 1 | 1 | |
| 11 | 90520-03806 | DAMPER, PLATE | 1 | 1 | 1 | 1 | |
| 12 | 97707-50012 | SCREW, TRUSS HEAD TAPPING | 2 | 2 | 2 | 2 | |
| 13 | 5TL-F4727-00 | PIN, SEAT FITTING | 1 | 1 | 1 | 1 | |
| 14 | 54P-F4726-00 | HINGE, SEAT | 1 | 1 | 1 | 1 | |
| 15 | 95702-06500 | NUT, FLANGE | 2 | 2 | 2 | 2 | |
| 16 | 5TL-F4780-00 | SEAT LOCK ASSY | 1 | 1 | 1 | 1 | |
| 17 | 5TL-F4792-00 | PLATE | 1 | 1 | 1 | 1 | |
| 18 | 95702-06500 | NUT, FLANGE | 2 | 2 | 2 | 2 | |
| 19 | 54P-F117K-00 | STAY, LOCK | 1 | 1 | 1 | 1 | |
| 20 | 90159-06054 | SCREW, WITH WASHER | 1 | 1 | 1 | 1 | |
| 21 | 54P-F478E-00 | CABLE, SEAT LOCK | 1 | 1 | 1 | 1 | |
| 22 | 54P-F4773-00-35 | HANDLE, SEAT | 1 | 1 | 1 | | SL |
| | 54P-F4773-00-P0 | HANDLE, SEAT | | | | 1 | WM6 |
| 23 | 95822-06016 | BOLT, FLANGE | 4 | 4 | 4 | 4 | |
| 24 | 90520-03810 | DAMPER, PLATE | 1 | 1 | 1 | 1 | |
| 25 | 54P-F8100-00 | TOOL KIT | 1 | 1 | 1 | 1 | |

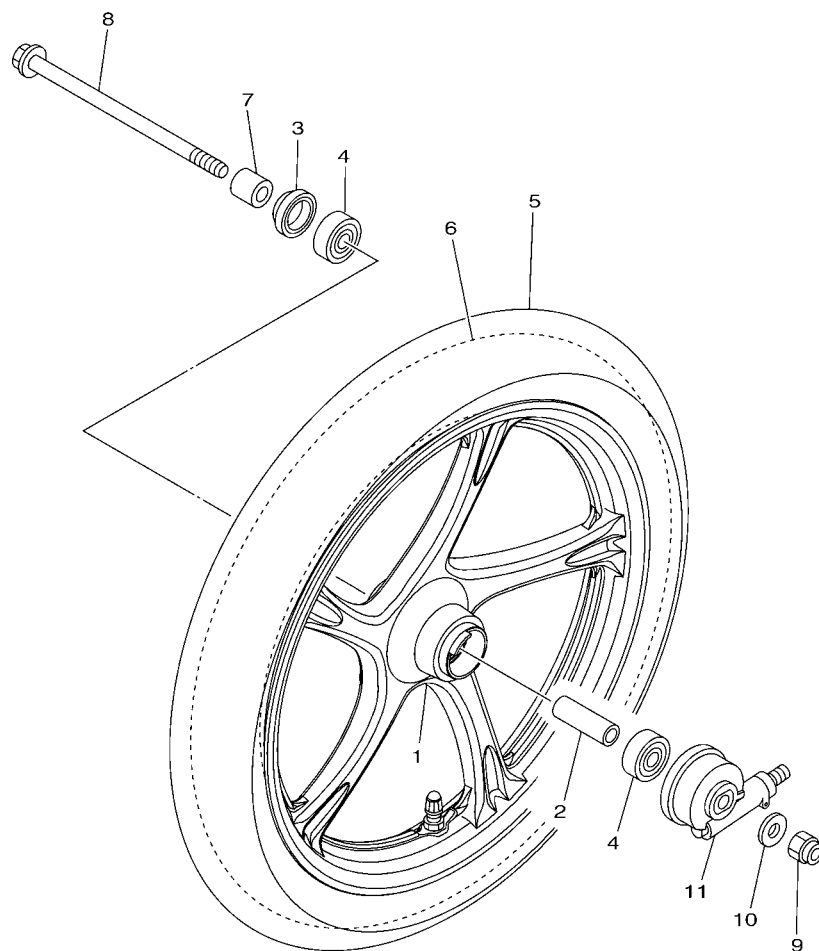


FIG. 21 FRONT WHEEL FOR CAST WHEEL

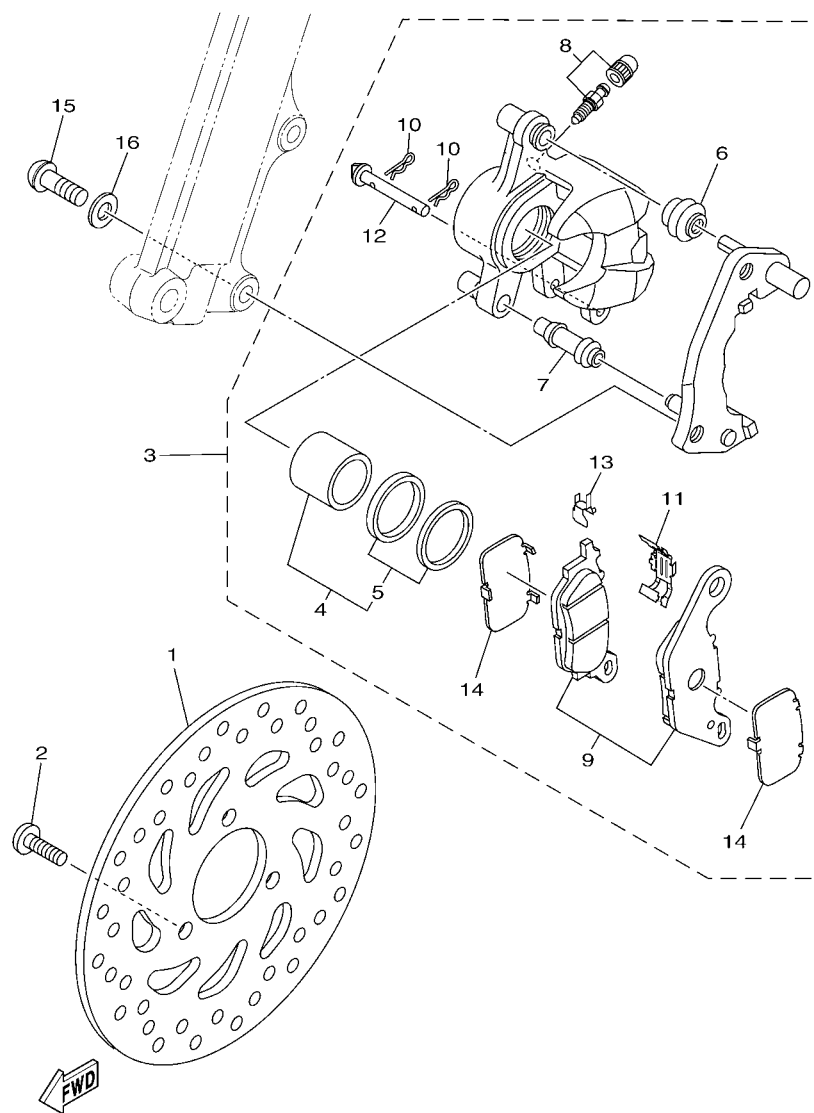


FIG. 23 FRONT BRAKE CALIPER

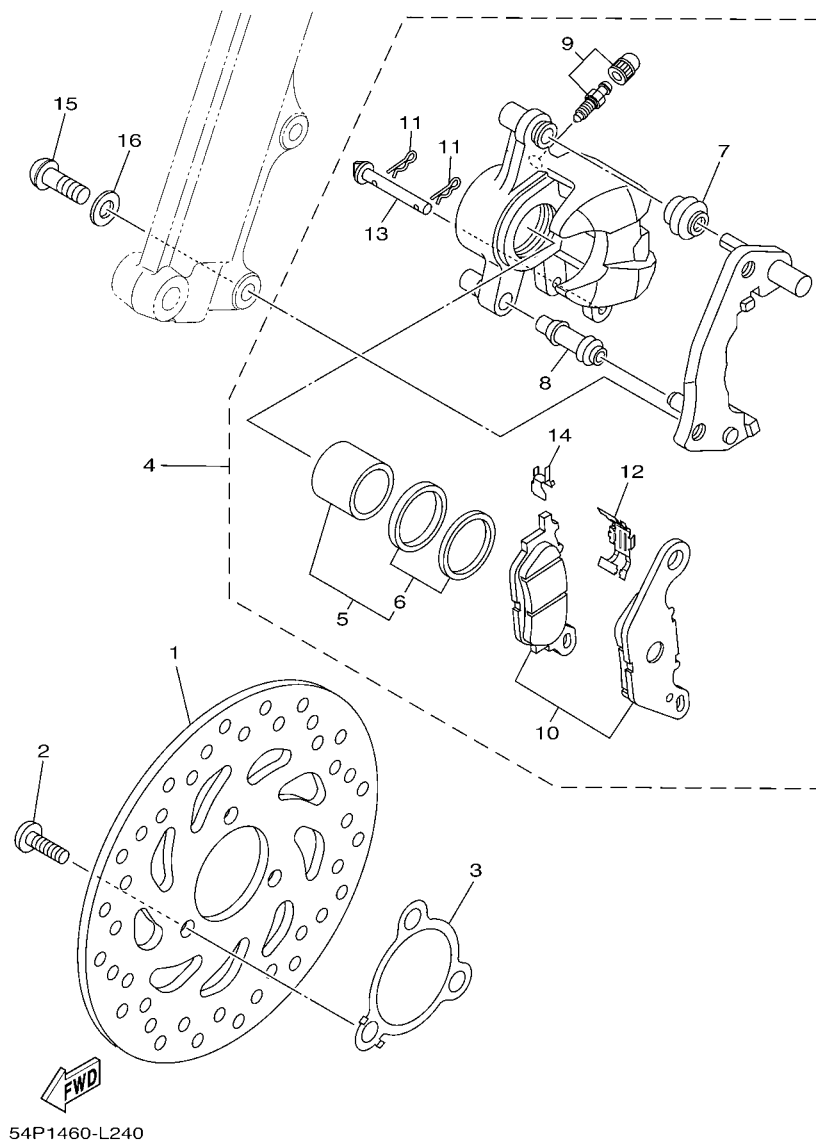


FIG. 24 FRONT BRAKE CALIPER 2

| REF. NO. | PART NO. | DESCRIPTION | 54P1 | 54P2 | 54PA | 54PB | REMARKS |
|----------|--------------|-------------------------|------|------|------|------|---------|
| 1 | 54P-F582U-00 | DISK, BRAKE (RIGHT) | | 1 | 1 | 1 | |
| 2 | 90111-08815 | BOLT,HEX. SOCKET BUTTON | | 3 | 3 | 3 | |
| 3 | 54P-F518A-00 | PLATE, FITTING | | 1 | 1 | 1 | |
| 4 | 54P-F580U-00 | CALIPER ASSY (RIGHT) | | 1 | 1 | 1 | |
| 5 | 5P0-F5802-00 | .PISTON ASSY, CALIPER | | 1 | 1 | 1 | |
| 6 | 5YP-F5803-50 | ..CALIPER SEAL KIT | | 1 | 1 | 1 | |
| 7 | 5YP-F5917-00 | .BOOT, CALIPER | | 1 | 1 | 1 | |
| 8 | 5YP-F5937-00 | .BOOT 2 | | 1 | 1 | 1 | |
| 9 | 4C9-W0048-00 | .BLEED SCREW KIT | | 1 | 1 | 1 | |
| 10 | 3C1-F5805-10 | .BRAKE PAD KIT | | 1 | 1 | 1 | |
| 11 | 5YP-F5925-01 | .CLIP | | 2 | 2 | 2 | |
| 12 | 5P0-F5919-00 | .SUPPORT, PAD | | 1 | 1 | 1 | |
| 13 | 5YP-F5924-00 | .PIN, PAD | | 1 | 1 | 1 | |
| 14 | 5YP-F5939-00 | .CLIP, PAD | | 1 | 1 | 1 | |
| 15 | 90149-10804 | SCREW | | 2 | 2 | 2 | |
| 16 | 92902-10200 | WASHER | | 2 | 2 | 2 | |
| | | | | | | | |
| | | | | | | | |
| | | | | | | | |
| | | | | | | | |

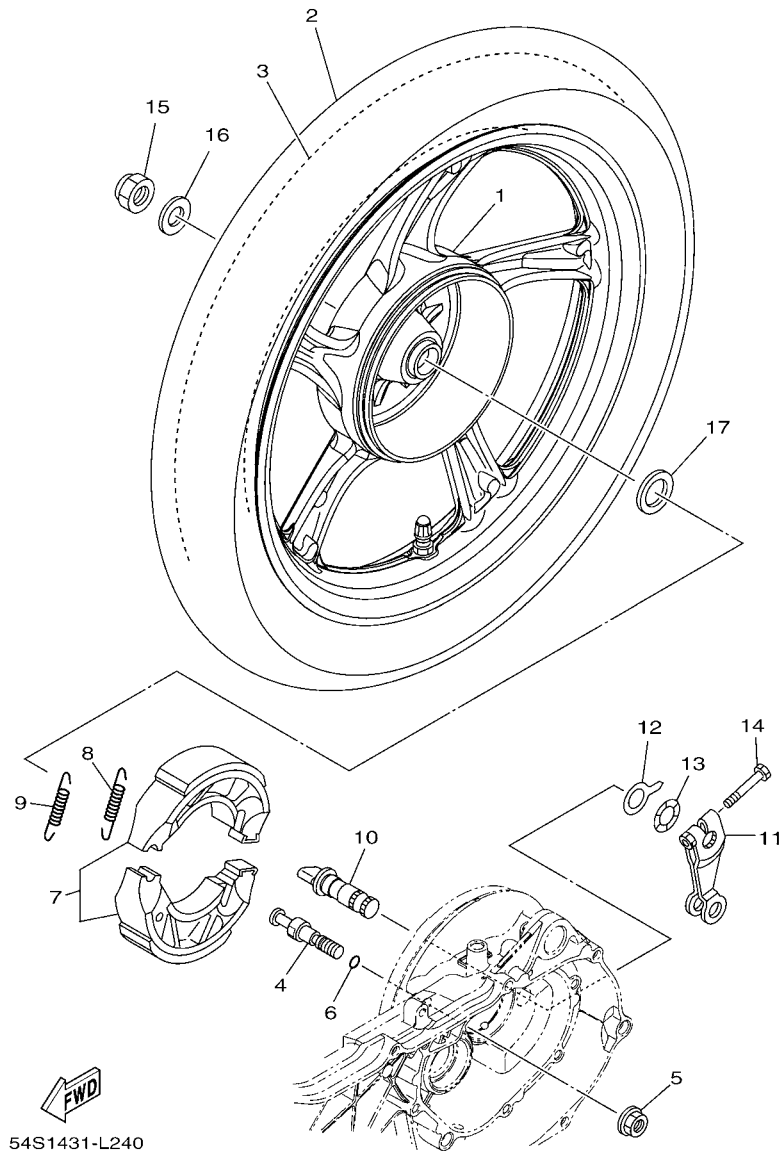


FIG. 25 REAR WHEEL FOR CAST WHEEL

| REF. NO. | PART NO. | DESCRIPTION | 54P1 | 54P2 | 54PA | 54PB | REMARKS |
|----------|-----------------|-----------------------------|------|------|------|------|---------|
| 1 | 54P-F5338-00-33 | CAST WHEEL, REAR (0033,YB) | | 1 | 1 | | YB |
| | 54P-F5338-00-P1 | CAST WHEEL, REAR | | | | 1 | WSA |
| 2 | 94108-14802 | TIRE (80/90-14M/C 40P NR76) | | 1 | 1 | 1 | INOUE |
| 3 | 94208-14802 | TUBE (80/90-14M/C TR4) | | 1 | 1 | 1 | INOUE |
| 4 | 54P-F5326-00 | PIN, PIVOT | | 1 | 1 | 1 | |
| 5 | 95702-10500 | NUT, FLANGE | | 1 | 1 | 1 | |
| 6 | 93210-07802 | O-RING | | 1 | 1 | 1 | |
| 7 | 5MX-F530K-00 | BRAKE SHOE SET | | 1 | 1 | 1 | |
| 8 | 90506-12001 | SPRING, TENSION | | 1 | 1 | 1 | |
| 9 | 90506-15001 | SPRING, TENSION | | 1 | 1 | 1 | |
| 10 | 5MX-F5351-00 | CAMSHAFT | | 1 | 1 | 1 | |
| 11 | 5LW-F5355-00 | LEVER, CAMSHAFT | | 1 | 1 | 1 | |
| 12 | 5MX-F533A-00 | PLATE, INDICATOR | | 1 | 1 | 1 | |
| 13 | 90206-14093 | WASHER, WAVE | | 1 | 1 | 1 | |
| 14 | 90101-06046 | BOLT | | 1 | 1 | 1 | |
| 15 | 90185-14814 | NUT, SELF-LOCKING | | 1 | 1 | 1 | |
| 16 | 90201-14820 | WASHER, PLATE | | 1 | 1 | 1 | |
| 17 | 90201-20276 | WASHER, PLATE (T=1.0) | | 1 | 1 | 1 | |
| | | | | | | | |
| | | | | | | | |
| | | | | | | | |
| | | | | | | | |

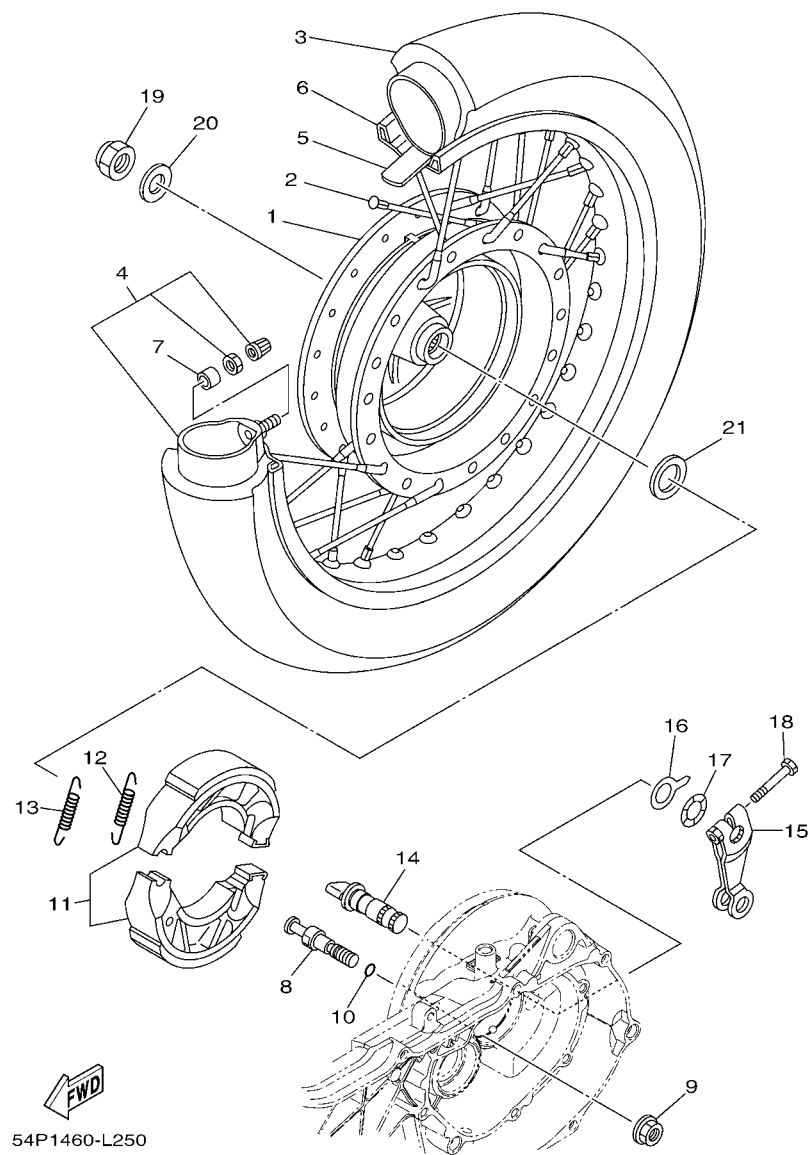


FIG. 26 REAR WHEEL FOR SPOKE WHEEL

| REF. NO. | PART NO. | DESCRIPTION | 54P1 | 54P2 | 54PA | 54PB | REMARKS |
|----------|--------------|-----------------------------|------|------|------|------|---------|
| 1 | 5TL-F5311-00 | HUB, REAR | 1 | | | | |
| 2 | 28D-WF53H-10 | SPOKE SET, REAR | 1 | | | | |
| 3 | 94108-14802 | TIRE (80/90-14M/C 40P NR76) | 1 | | | | INOUE |
| 4 | 94208-14802 | TUBE (80/90-14M/C TR4) | 1 | | | | INOUE |
| 5 | 94307-14802 | BAND, RIM (22.0-14) | 1 | | | | INOUE |
| 6 | 94416-14801 | RIM (1.60-14) | 1 | | | | |
| 7 | 90387-08815 | COLLAR | 1 | | | | |
| 8 | 54P-F5326-00 | PIN, PIVOT | 1 | | | | |
| 9 | 95702-10500 | NUT, FLANGE | 1 | | | | |
| 10 | 93210-07802 | O-RING | 1 | | | | |
| 11 | 5MX-F530K-00 | BRAKE SHOE SET | 1 | | | | |
| 12 | 90506-12001 | SPRING, TENSION | 1 | | | | |
| 13 | 90506-15001 | SPRING, TENSION | 1 | | | | |
| 14 | 5MX-F5351-00 | CAMSHAFT | 1 | | | | |
| 15 | 5LW-F5355-00 | LEVER, CAMSHAFT | 1 | | | | |
| 16 | 5MX-F533A-00 | PLATE, INDICATOR | 1 | | | | |
| 17 | 90206-14093 | WASHER, WAVE | 1 | | | | |
| 18 | 90101-06046 | BOLT | 1 | | | | |
| 19 | 90185-14814 | NUT, SELF-LOCKING | 1 | | | | |
| 20 | 90201-14820 | WASHER, PLATE | 1 | | | | |
| 21 | 90201-20276 | WASHER, PLATE (T=1.0) | 1 | | | | |

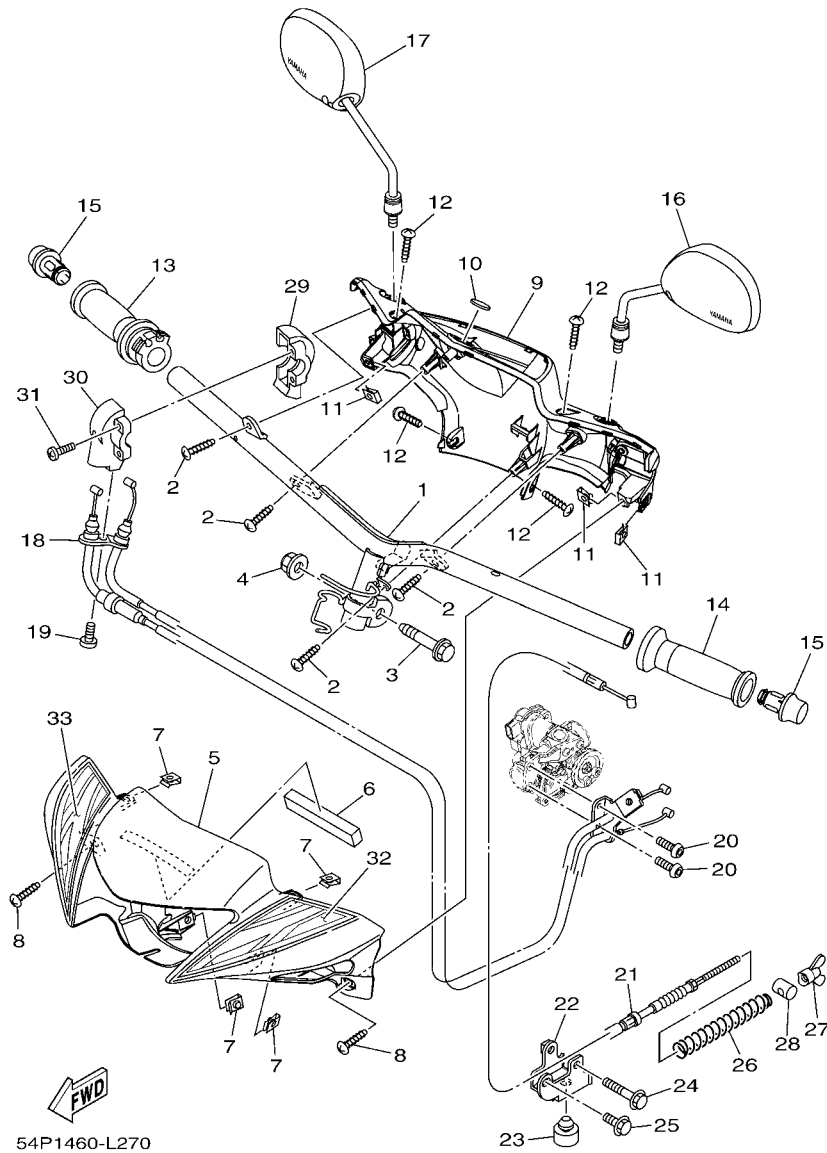


FIG. 27 STEERING HANDLE & CABLE

| REF. NO. | PART NO. | DESCRIPTION | 54P1 | 54P2 | 54PA | 54PB | REMARKS |
|----------|-----------------|------------------------------|------|------|------|------|------------------|
| 1 | 54P-F6110-00 | HANDLE COMP. | 1 | 1 | 1 | 1 | |
| 2 | 97707-50016 | SCREW, TRUSS HEAD TAPPING | 4 | 4 | 4 | 4 | |
| 3 | 90105-10036 | BOLT, FLANGE | 1 | 1 | 1 | 1 | |
| 4 | 90185-10815 | NUT, SELF-LOCKING | 1 | 1 | 1 | 1 | |
| 5 | 54P-F6143-00-P0 | COVER, HAND UPPER 1 | 1 | 1 | | | UR FOR RSM2 |
| --- | 54P-F6143-00-P1 | COVER, HAND UPPER 1 | 1 | 1 | | | UR FOR RM7 |
| | 54P-F6143-00-P2 | COVER, HAND UPPER 1 | 1 | 1 | | | UR FOR BMC |
| | 54P-F6143-00-P3 | COVER, HAND UPPER 1 | 1 | 1 | | | UR FOR WM6 |
| | 54P-F6143-00-P4 | COVER, HAND UPPER 1 | | 1 | | | UR FOR LGM6 |
| | 54P-F6143-10-P0 | COVER, HAND UPPER 1 | | | 1 | | UR FOR RSM2 |
| --- | 54P-F6143-10-P1 | COVER, HAND UPPER 1 | | | 1 | | UR FOR RM7 |
| | 54P-F6143-10-P2 | COVER, HAND UPPER 1 | | | 1 | | UR FOR BMC |
| | 54P-F6143-10-P3 | COVER, HAND UPPER 1 | | | 1 | | UR FOR WM6 |
| | 54P-F6143-10-P4 | COVER, HAND UPPER 1 | | | 1 | | UR FOR LGM6 |
| | 54P-F6143-10-P3 | COVER, HAND UPPER 1 | | | | 1 | WM6(SMX,RM7,BMC) |
| --- | 54P-F6143-10-P6 | COVER, HAND UPPER 1 | | | | 1 | SMX(WM6,LGM6) |
| 6 | 90520-20806 | DAMPER, PLATE | 1 | 1 | 1 | 1 | |
| 7 | 90183-05807 | NUT, SPRING | 4 | 4 | 4 | 4 | |
| 8 | 97707-50016 | SCREW, TRUSS HEAD TAPPING | 2 | 2 | 2 | 2 | |
| 9 | 54P-F6145-00 | COVER, HAND UPPER 2 | 1 | 1 | 1 | 1 | |
| 10 | 14D-F3108-00 | EMBLEM | 1 | 1 | 1 | 1 | |
| 11 | 90183-05807 | NUT, SPRING | 3 | 3 | 3 | 3 | |
| 12 | 97707-50016 | SCREW, TRUSS HEAD TAPPING | 4 | 4 | 4 | 4 | |
| 13 | 44D-F6240-00 | GRIP ASSY | 1 | 1 | 1 | 1 | |
| 14 | 44D-F6241-00 | GRIP | 1 | 1 | 1 | 1 | |
| 15 | 54P-F6246-00 | END, GRIP | 2 | 2 | 2 | 2 | |
| 16 | 2P2-F6280-11 | REAR VIEW MIRROR ASSY (LEFT) | 1 | 1 | 1 | 1 | |

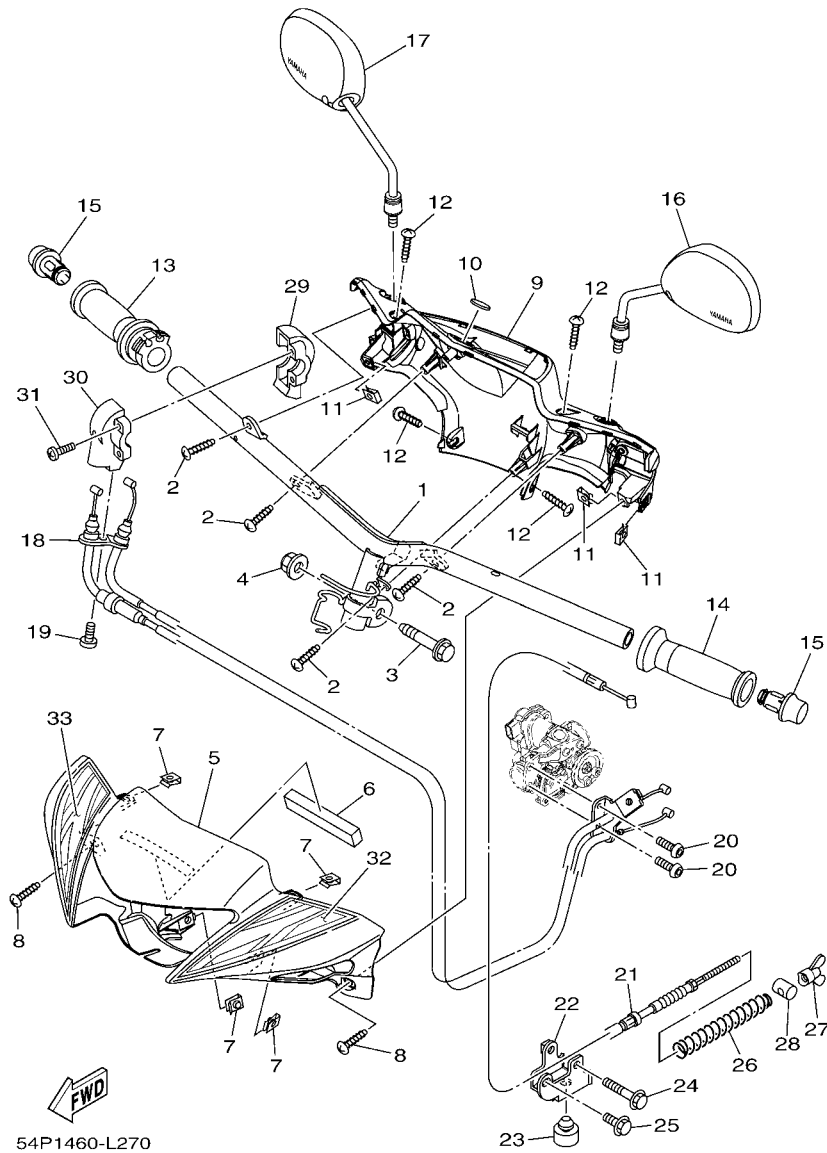


FIG. 27 STEERING HANDLE & CABLE

| REF. NO. | PART NO. | DESCRIPTION | 54P1 | 54P2 | 54PA | 54PB | REMARKS |
|----------|--------------|-------------------------------|------|------|------|------|----------------|
| 17 | 2P2-F6290-11 | REAR VIEW MIRROR ASSY (RIGHT) | 1 | 1 | 1 | 1 | |
| 18 | 54P-F6301-00 | THROTTLE CABLE ASSY | 1 | 1 | 1 | 1 | UR |
| | 54P-F6301-10 | THROTTLE CABLE ASSY | 1 | 1 | 1 | 1 | UR |
| 19 | 92012-05016 | BOLT, BUTTON HEAD | 1 | 1 | 1 | 1 | |
| 20 | 92012-05010 | BOLT, BUTTON HEAD | 2 | 2 | 2 | 2 | |
| 21 | 54P-F6351-00 | CABLE, BRAKE | 1 | 1 | 1 | 1 | |
| 22 | 54P-F637G-00 | HOLDER, WIRE | 1 | 1 | 1 | 1 | |
| 23 | 54P-F7114-00 | STOPPER, MAIN STAND | 1 | 1 | 1 | 1 | |
| 24 | 95022-06040 | BOLT, FLANGE | 1 | 1 | 1 | 1 | |
| 25 | 95022-06014 | BOLT, FLANGE | 1 | 1 | 1 | 1 | |
| 26 | 90501-16003 | SPRING, COMPRESSION | 1 | 1 | 1 | 1 | |
| 27 | 90175-06013 | NUT, WING | 1 | 1 | 1 | 1 | |
| 28 | 90249-12008 | PIN | 1 | 1 | 1 | 1 | |
| 29 | 44D-F6281-00 | CAP, GRIP UPPER | 1 | 1 | 1 | 1 | |
| 30 | 44D-F6282-00 | CAP, GRIP UNDER | 1 | 1 | 1 | 1 | |
| 31 | 98502-05025 | SCREW, PAN HEAD | 2 | 2 | 2 | 2 | |
| 32 | 54P-F6192-30 | GRAPHIC 1 | | | | 1 | UR FOR SMX,RM7 |
| | 54P-F6192-20 | GRAPHIC 1 | | | | 1 | UR FOR BMC |
| | 54P-F6192-00 | GRAPHIC 1 | | | | 1 | UR FOR WM6 |
| | 54P-F6192-10 | GRAPHIC 1 | | | | 1 | UR FOR LGM6 |
| 33 | 54P-F6193-30 | GRAPHIC 2 | | | | 1 | UR FOR SMX,RM7 |
| | 54P-F6193-20 | GRAPHIC 2 | | | | 1 | UR FOR BMC |
| | 54P-F6193-00 | GRAPHIC 2 | | | | 1 | UR FOR WM6 |
| | 54P-F6193-10 | GRAPHIC 2 | | | | 1 | UR FOR LGM6 |

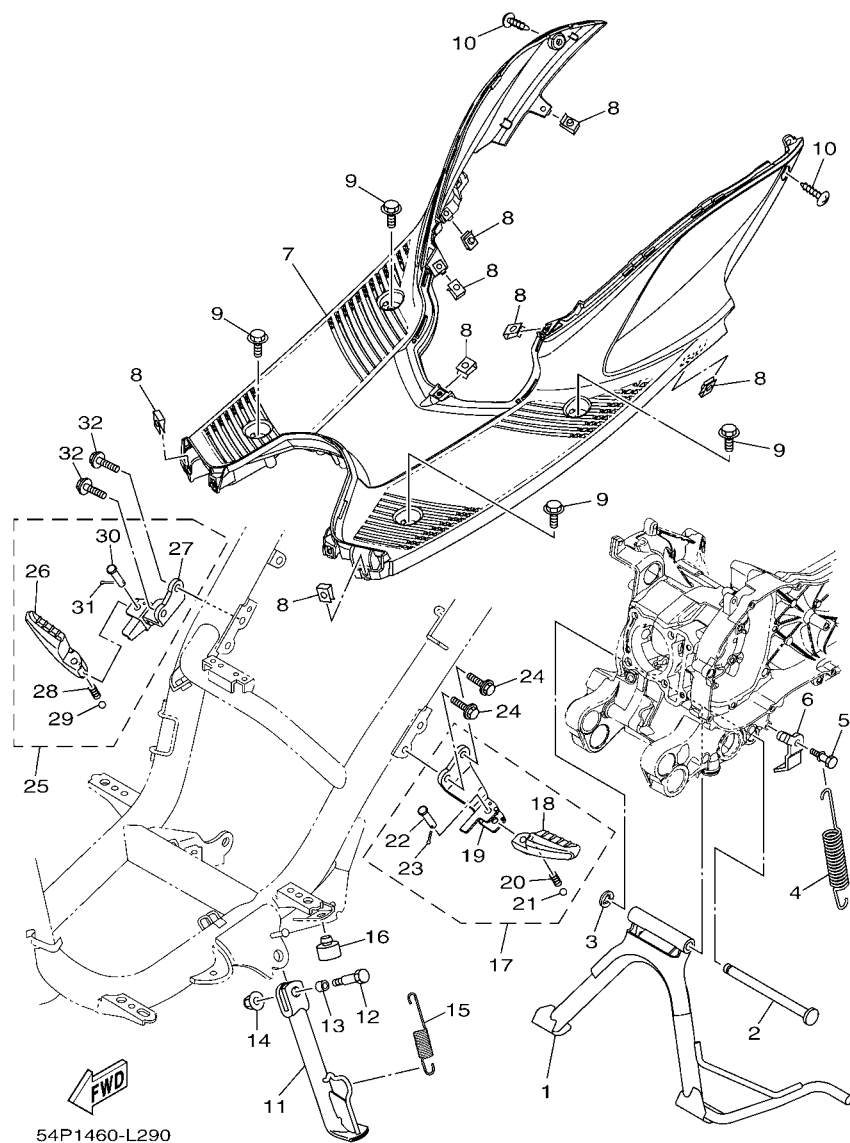


FIG. 29 STAND & FOOTREST

| REF. NO. | PART NO. | DESCRIPTION | 54P1 | 54P2 | 54PA | 54PB | REMARKS |
|----------|--------------|---------------------------|------|------|------|------|---------|
| 1 | 54P-F7111-00 | STAND, MAIN | 1 | 1 | 1 | 1 | |
| 2 | 54P-F7112-00 | SHAFT, MAIN STAND | 1 | 1 | 1 | 1 | |
| 3 | 99002-08600 | CLIP | 1 | 1 | 1 | 1 | |
| 4 | 90506-35821 | SPRING, TENSION | 1 | 1 | 1 | 1 | |
| 5 | 5LW-F7254-00 | HOOK | 1 | 1 | 1 | 1 | |
| 6 | 54P-F7267-00 | GUIDE, WIRE | 1 | 1 | 1 | 1 | |
| 7 | 54P-F7481-00 | BOARD, FOOTREST | 1 | 1 | 1 | 1 | |
| 8 | 90183-05807 | NUT, SPRING | 8 | 8 | 8 | 8 | |
| 9 | 90119-06044 | BOLT, WITH WASHER | 4 | 4 | 4 | 4 | |
| 10 | 97707-50016 | SCREW, TRUSS HEAD TAPPING | 2 | 2 | 2 | 2 | |
| 11 | 54P-F7311-00 | STAND, SIDE | 1 | 1 | 1 | 1 | |
| 12 | 90101-08847 | BOLT | 1 | 1 | 1 | 1 | |
| 13 | 90387-08820 | COLLAR | 1 | 1 | 1 | 1 | |
| 14 | 95602-08200 | NUT, SELF-LOCKING | 1 | 1 | 1 | 1 | |
| 15 | 90506-20514 | SPRING, TENSION | 1 | 1 | 1 | 1 | |
| 16 | 4YY-F7114-00 | STOPPER, MAIN STAND | 1 | 1 | 1 | 1 | |
| 17 | 54P-F7430-00 | REAR FOOTREST ASSY 1 | 1 | 1 | 1 | 1 | |
| 18 | 54P-F7431-00 | .FOOTREST, REAR 1 | 1 | 1 | 1 | 1 | |
| 19 | 54P-F7432-00 | .BRACKET 1 | 1 | 1 | 1 | 1 | |
| 20 | 90501-12743 | .SPRING, COMPRESSION | 1 | 1 | 1 | 1 | |
| 21 | 93501-04843 | .BALL | 1 | 1 | 1 | 1 | |
| 22 | 91701-08035 | .PIN | 1 | 1 | 1 | 1 | |
| 23 | 91401-25015 | .PIN, COTTER | 1 | 1 | 1 | 1 | |
| 24 | 95802-08030 | BOLT, FLANGE | 2 | 2 | 2 | 2 | |
| 25 | 54P-F7440-00 | REAR FOOTREST ASSY 2 | 1 | 1 | 1 | 1 | |
| 26 | 54P-F7441-00 | .FOOTREST, REAR 2 | 1 | 1 | 1 | 1 | |
| 27 | 54P-F7442-00 | .BRACKET 2 | 1 | 1 | 1 | 1 | |

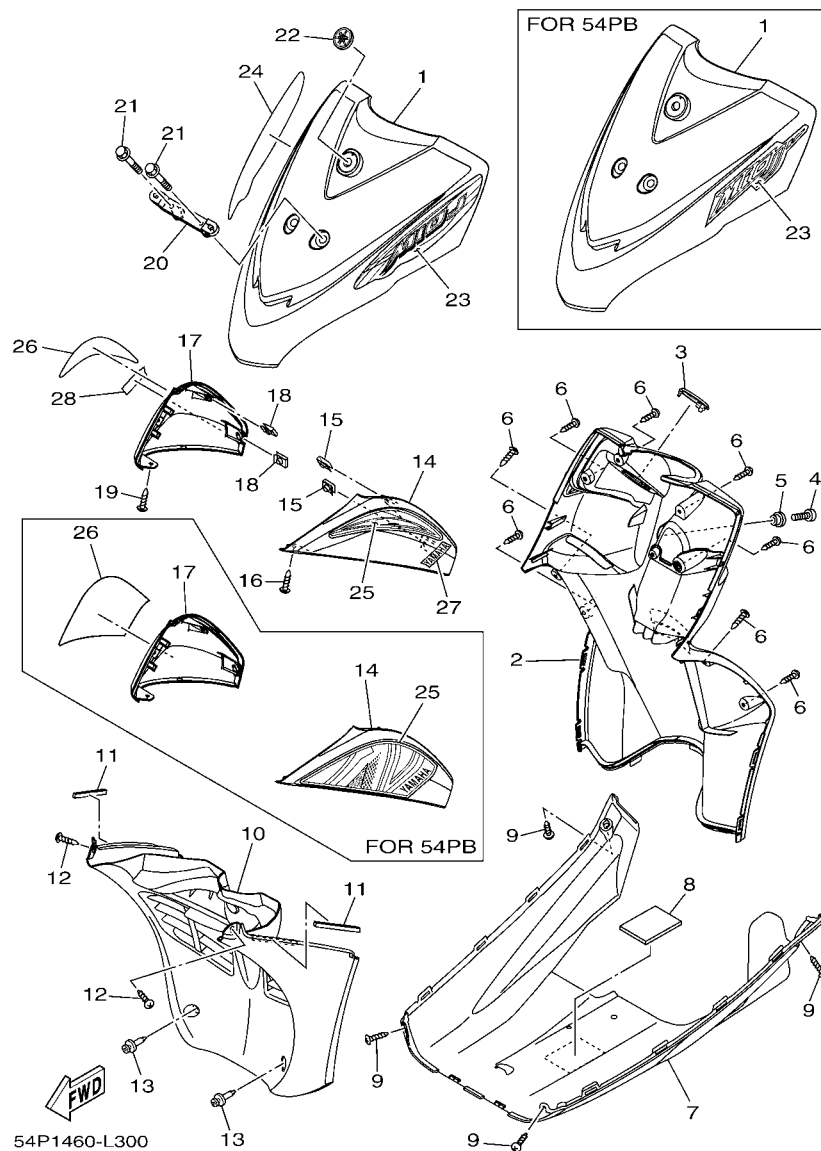


FIG. 30 LEG SHIELD

| REF. NO. | PART NO. | DESCRIPTION | 54P1 | 54P2 | 54PA | 54PB | REMARKS |
|----------|-----------------|---------------------------|------|------|------|------|-------------------|
| 1 | 54P-F8311-00-P0 | LEG SHIELD 1 | 1 | 1 | | | UR FOR RSM2 |
| | 54P-F8311-00-P1 | LEG SHIELD 1 | 1 | 1 | | | UR FOR RM7 |
| | 54P-F8311-00-P2 | LEG SHIELD 1 | 1 | 1 | | | UR FOR BMC |
| | 54P-F8311-00-P3 | LEG SHIELD 1 | 1 | 1 | | | UR FOR WM6 |
| | 54P-F8311-00-P4 | LEG SHIELD 1 | | 1 | | | UR FOR LGM6 |
| --- | 54P-F8311-10-P0 | LEG SHIELD 1 | | | 1 | | UR FOR RSM2 |
| | 54P-F8311-10-P1 | LEG SHIELD 1 | | | 1 | | UR FOR RM7 |
| | 54P-F8311-10-P2 | LEG SHIELD 1 | | | 1 | | UR FOR BMC |
| | 54P-F8311-10-P3 | LEG SHIELD 1 | | | 1 | | UR FOR WM6 |
| | 54P-F8311-10-P4 | LEG SHIELD 1 | | | 1 | | UR FOR LGM6 |
| --- | 54P-F8311-10-P3 | LEG SHIELD 1 | | | | 1 | WM6(SMX,RM7,BMC) |
| | 54P-F8311-10-P6 | LEG SHIELD 1 | | | | 1 | SMX(WM6,LGM6) |
| 2 | 54P-F8300-00 | LEG SHIELD ASSY | 1 | 1 | 1 | 1 | |
| 3 | 54P-F8365-00 | COVER | 1 | 1 | 1 | 1 | |
| 4 | 98907-06012 | SCREW, BIND | 1 | 1 | 1 | 1 | |
| --- | 5 90387-07828 | COLLAR | 1 | 1 | 1 | 1 | |
| 6 | 97707-50016 | SCREW, TRUSS HEAD TAPPING | 8 | 8 | 8 | 8 | |
| 7 | 54P-F8385-00 | COVER, UNDER | 1 | 1 | 1 | | |
| | 54P-F8385-20 | COVER, UNDER | | | | 1 | UR EXCEPT FOR WM6 |
| | 54P-F8385-10 | COVER, UNDER | | | | 1 | UR FOR WM6 |
| --- | 8 4ST-F1638-00 | DAMPER 1 | 1 | 1 | 1 | 1 | |
| 9 | 97707-50016 | SCREW, TRUSS HEAD TAPPING | 4 | 4 | 4 | 4 | |
| 10 | 54P-F1552-00 | FENDER, INNER | 1 | 1 | 1 | | |
| | 54P-F1552-20 | FENDER, INNER | | | | 1 | UR EXCEPT FOR WM6 |
| | 54P-F1552-10 | FENDER, INNER | | | | 1 | UR FOR WM6 |
| --- | 11 90520-03811 | DAMPER, PLATE | 2 | 2 | 2 | 2 | |
| 12 | 97707-50016 | SCREW, TRUSS HEAD TAPPING | 2 | 2 | 2 | 2 | |

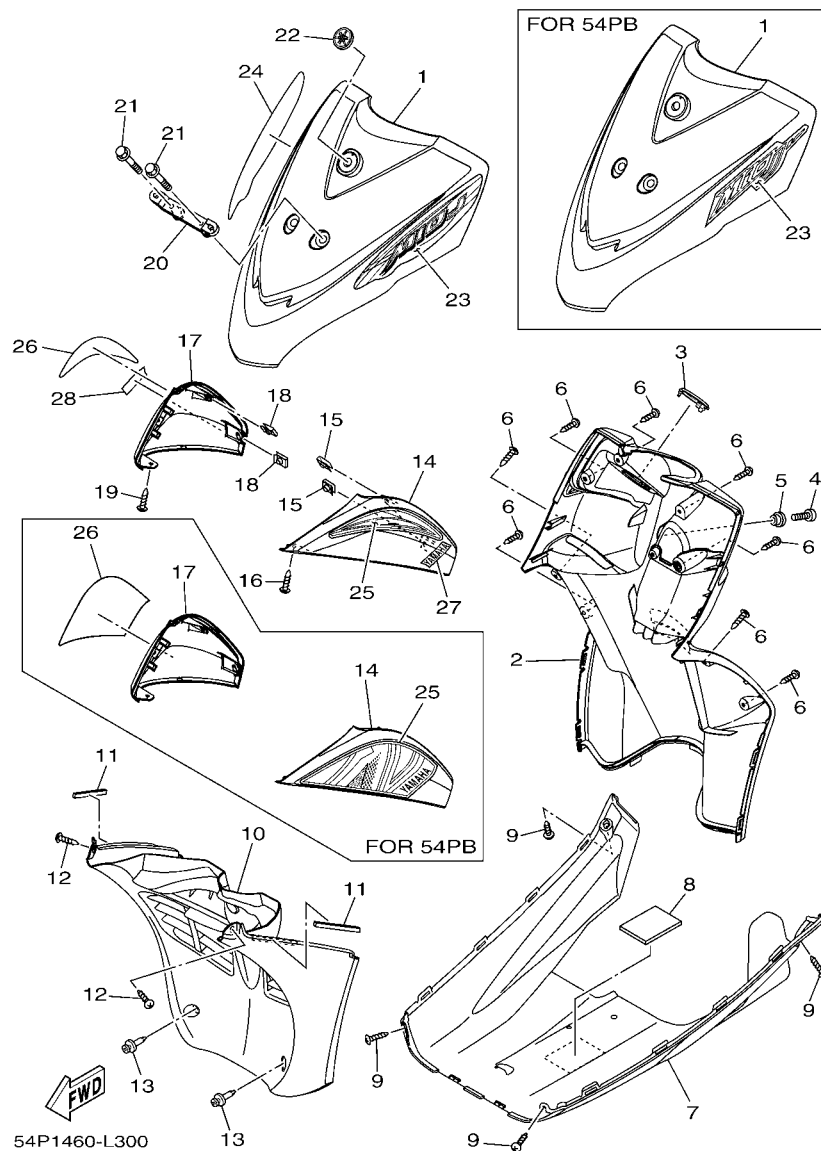


FIG. 30 LEG SHIELD

| REF. NO. | PART NO. | DESCRIPTION | 54P1 | 54P2 | 54PA | 54PB | REMARKS |
|----------|-----------------|---------------------------|------|------|------|------|-------------|
| 13 | 90269-06812 | RIVET | 2 | 2 | 2 | 2 | |
| 14 | 54P-F83D3-00-P0 | COVER, FLASHER 1 | 1 | 1 | | | UR FOR RSM2 |
| | 54P-F83D3-00-P1 | COVER, FLASHER 1 | 1 | 1 | | | UR FOR RM7 |
| | 54P-F83D3-00-P2 | COVER, FLASHER 1 | 1 | 1 | | | UR FOR BMC |
| | 54P-F83D3-00-P3 | COVER, FLASHER 1 | 1 | 1 | | | UR FOR WM6 |
| | 54P-F83D3-00-P4 | COVER, FLASHER 1 | | 1 | | | UR FOR LGM6 |
| | 54P-F83D3-10-P0 | COVER, FLASHER 1 | | | 1 | | UR FOR RSM2 |
| | 54P-F83D3-10-P6 | COVER, FLASHER 1 | | | | 1 | UR FOR SMX |
| | 54P-F83D3-10-P1 | COVER, FLASHER 1 | | | 1 | 1 | UR FOR RM7 |
| | 54P-F83D3-10-P2 | COVER, FLASHER 1 | | | 1 | 1 | UR FOR BMC |
| | 54P-F83D3-10-P3 | COVER, FLASHER 1 | | | 1 | 1 | UR FOR WM6 |
| | 54P-F83D3-10-P4 | COVER, FLASHER 1 | | | 1 | 1 | UR FOR LGM6 |
| 15 | 90183-05807 | NUT, SPRING | 2 | 2 | 2 | 2 | |
| 16 | 97707-50016 | SCREW, TRUSS HEAD TAPPING | 1 | 1 | 1 | 1 | |
| 17 | 54P-F83D4-00-P0 | COVER, FLASHER 2 | 1 | 1 | | | UR FOR RSM2 |
| | 54P-F83D4-00-P1 | COVER, FLASHER 2 | 1 | 1 | | | UR FOR RM7 |
| | 54P-F83D4-00-P2 | COVER, FLASHER 2 | 1 | 1 | | | UR FOR BMC |
| | 54P-F83D4-00-P3 | COVER, FLASHER 2 | 1 | 1 | | | UR FOR WM6 |
| | 54P-F83D4-00-P4 | COVER, FLASHER 2 | | 1 | | | UR FOR LGM6 |
| | 54P-F83D4-10-P0 | COVER, FLASHER 2 | | | 1 | | UR FOR RSM2 |
| | 54P-F83D4-10-P6 | COVER, FLASHER 2 | | | | 1 | UR FOR SMX |
| | 54P-F83D4-10-P1 | COVER, FLASHER 2 | | | 1 | 1 | UR FOR RM7 |
| | 54P-F83D4-10-P2 | COVER, FLASHER 2 | | | 1 | 1 | UR FOR BMC |
| | 54P-F83D4-10-P3 | COVER, FLASHER 2 | | | 1 | 1 | UR FOR WM6 |
| | 54P-F83D4-10-P4 | COVER, FLASHER 2 | | | 1 | 1 | UR FOR LGM6 |
| 18 | 90183-05807 | NUT, SPRING | 2 | 2 | 2 | 2 | |
| 19 | 97707-50016 | SCREW, TRUSS HEAD TAPPING | 1 | 1 | 1 | 1 | |

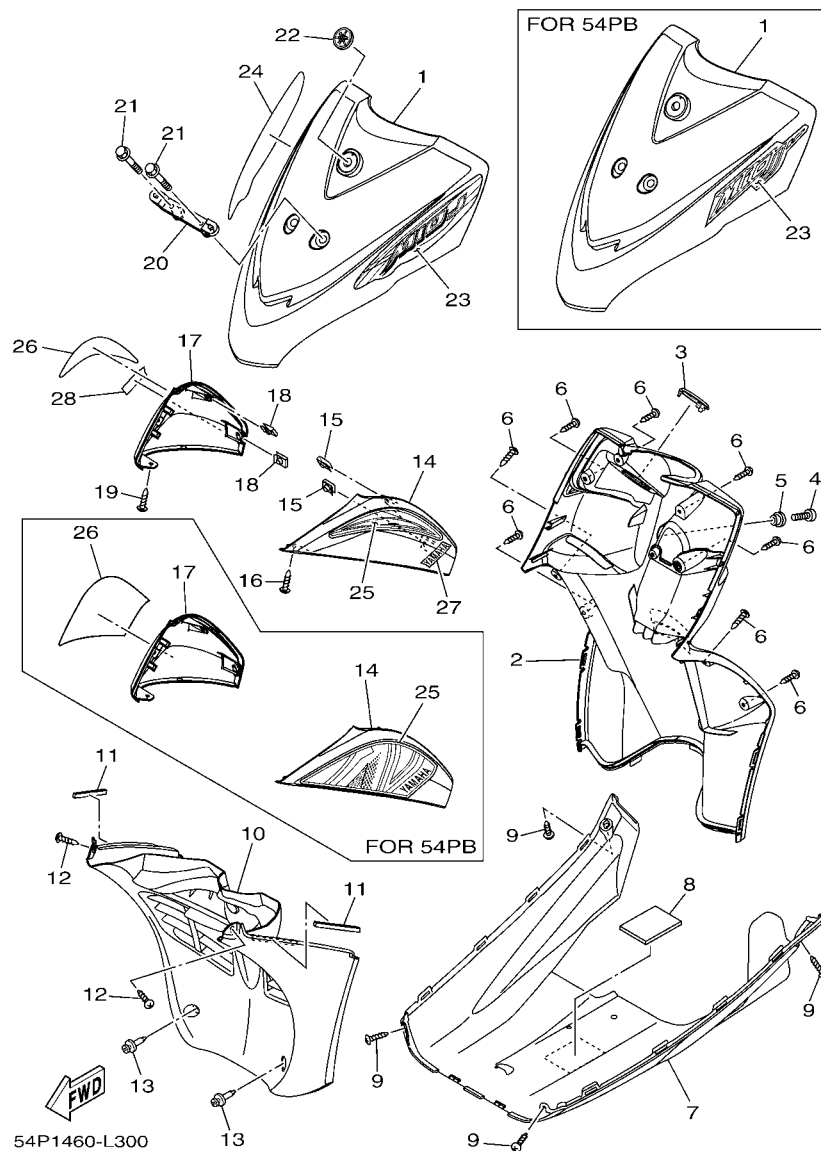


FIG. 30 LEG SHIELD

| REF. NO. | PART NO. | DESCRIPTION | 54P1 | 54P2 | 54PA | 54PB | REMARKS |
|----------|--------------|----------------|------|------|------|------|-----------------|
| 25 | 54P-F832B-70 | GRAPHIC, 15 | | | | 1 | UR FOR LGM6 |
| 26 | 54P-F832C-00 | GRAPHIC, 16 | 1 | 1 | 1 | | UR FOR RSM2 |
| | 54P-F832C-10 | GRAPHIC, 16 | 1 | 1 | 1 | | UR FOR RM7 |
| | 54P-F832C-20 | GRAPHIC, 16 | 1 | 1 | 1 | | UR FOR BMC |
| | 54P-F832C-30 | GRAPHIC, 16 | 1 | 1 | 1 | | UR FOR WM6 |
| --- | 54P-F832C-40 | GRAPHIC, 16 | | 1 | 1 | | UR FOR LGM6 |
| | 54P-F832C-90 | GRAPHIC, 16 | | | | 1 | UR FOR SMX |
| | 54P-F832C-A0 | GRAPHIC, 16 | | | | 1 | UR FOR RM7 |
| | 54P-F832C-80 | GRAPHIC, 16 | | | | 1 | UR FOR BMC |
| | 54P-F832C-60 | GRAPHIC, 16 | | | | 1 | UR FOR WM6 |
| --- | 54P-F832C-70 | GRAPHIC, 16 | | | | 1 | UR FOR LGM6 |
| 27 | 3S0-F153E-20 | EMBLEM, YAMAHA | 1 | 1 | 1 | | UR FOR RSM2,RM7 |
| | 3S0-F153E-30 | EMBLEM, YAMAHA | 1 | 1 | 1 | | UR FOR BMC |
| | 3S0-F153E-00 | EMBLEM, YAMAHA | 1 | 1 | 1 | | UR FOR WM6,LGM6 |
| 28 | 3S0-F153E-20 | EMBLEM, YAMAHA | 1 | 1 | 1 | | UR FOR RSM2,RM7 |
| --- | 3S0-F153E-30 | EMBLEM, YAMAHA | 1 | 1 | 1 | | UR FOR BMC |
| | 3S0-F153E-00 | EMBLEM, YAMAHA | 1 | 1 | 1 | | UR FOR WM6,LGM6 |
| --- | | | | | | | |
| --- | | | | | | | |
| --- | | | | | | | |

[illegible]

[illegible]

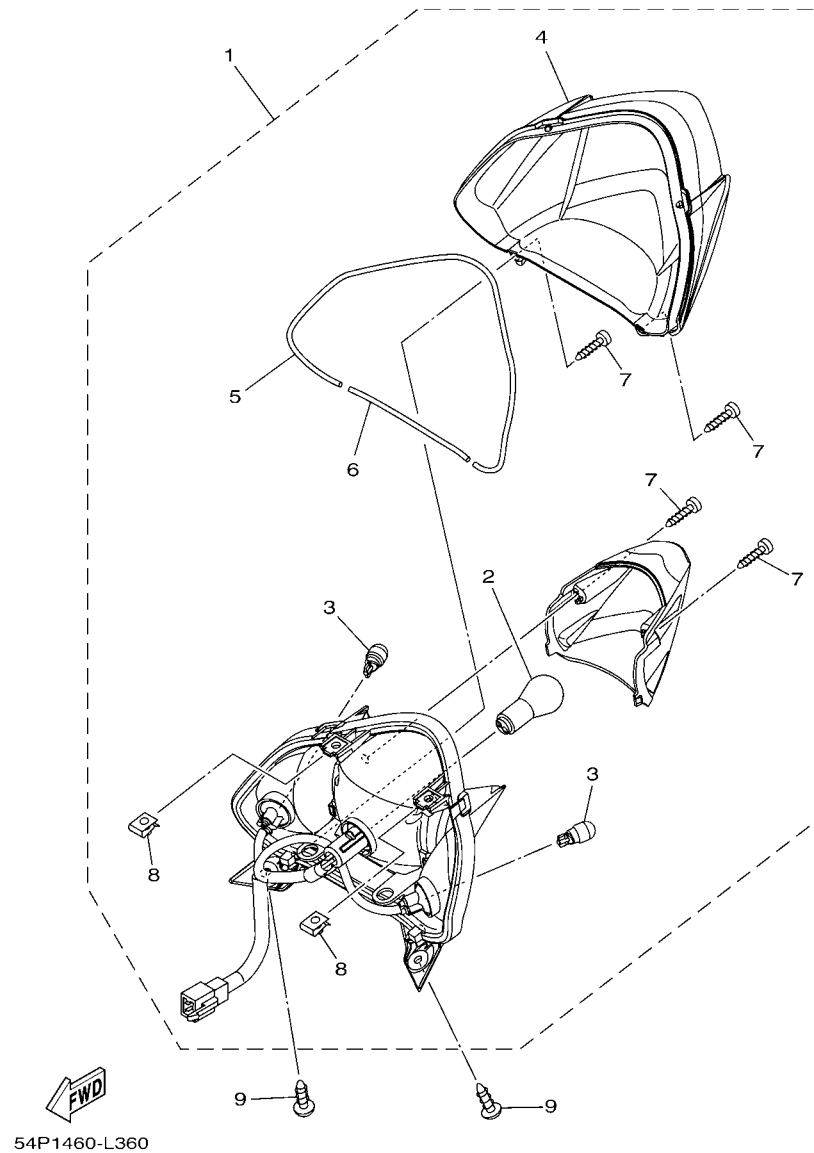
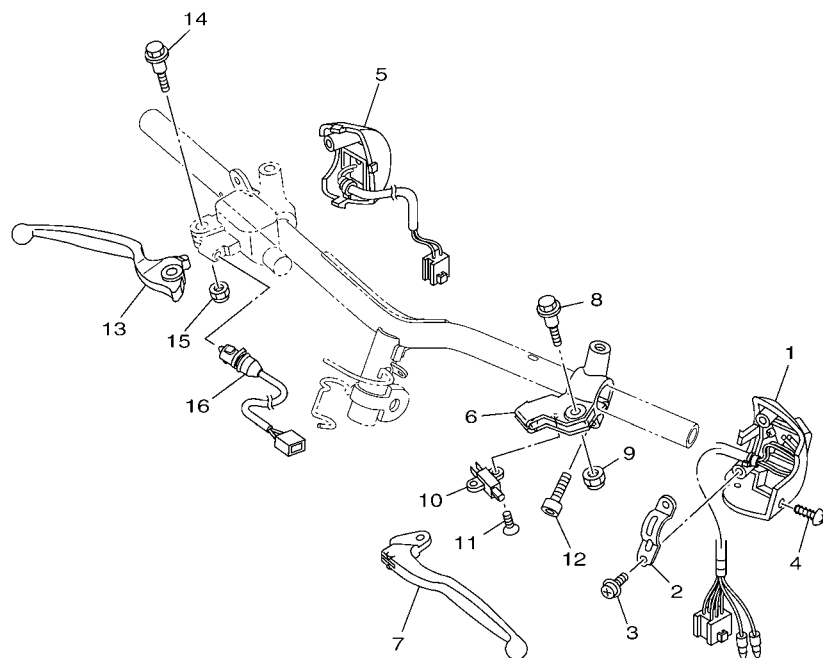


FIG. 36 TAILLIGHT




 54S1431-L360

FIG. 37 HANDLE SWITCH & LEVER

| REF. NO. | PART NO. | DESCRIPTION | 54P1 | 54P2 | 54PA | 54PB | REMARKS |
|----------|--------------|-----------------------------|------|------|------|------|---------|
| 1 | 44D-H3973-00 | SWITCH, HANDLE 3 | 1 | 1 | 1 | 1 | |
| 2 | 5TL-H3955-20 | BRACKET 1 | 1 | 1 | 1 | 1 | |
| 3 | 97602-05216 | SCREW, PAN HEAD WITH WASHER | 2 | 2 | 2 | 2 | |
| 4 | 97707-50016 | SCREW, TRUSS HEAD TAPPING | 1 | 1 | 1 | 1 | |
| 5 | 54P-H3976-00 | SWITCH, HANDLE 1 | 1 | 1 | 1 | 1 | |
| 6 | 5TL-H2911-20 | HOLDER, LEVER 1 | 1 | 1 | 1 | 1 | |
| 7 | 5TL-H3912-20 | LEVER 1 | 1 | 1 | 1 | 1 | |
| 8 | 90109-06814 | BOLT | 1 | 1 | 1 | 1 | |
| 9 | 95602-06100 | NUT, U | 1 | 1 | 1 | 1 | |
| 10 | 5TL-H3980-10 | FRONT STOP SWITCH ASSY | 1 | 1 | 1 | 1 | |
| 11 | 9870M-03008 | SCREW, FLAT HEAD | 1 | 1 | 1 | 1 | |
| 12 | 91312-06020 | BOLT | 1 | 1 | 1 | 1 | |
| 13 | 5TL-H3922-00 | LEVER 2 | 1 | 1 | 1 | 1 | |
| 14 | 90109-06255 | BOLT | 1 | 1 | 1 | 1 | |
| 15 | 95602-06100 | NUT, U | 1 | 1 | 1 | 1 | |
| 16 | 54P-H3980-00 | FRONT STOP SWITCH ASSY | 1 | 1 | 1 | 1 | |
| | | | | | | | |
| | | | | | | | |
| | | | | | | | |
| | | | | | | | |
| | | | | | | | |

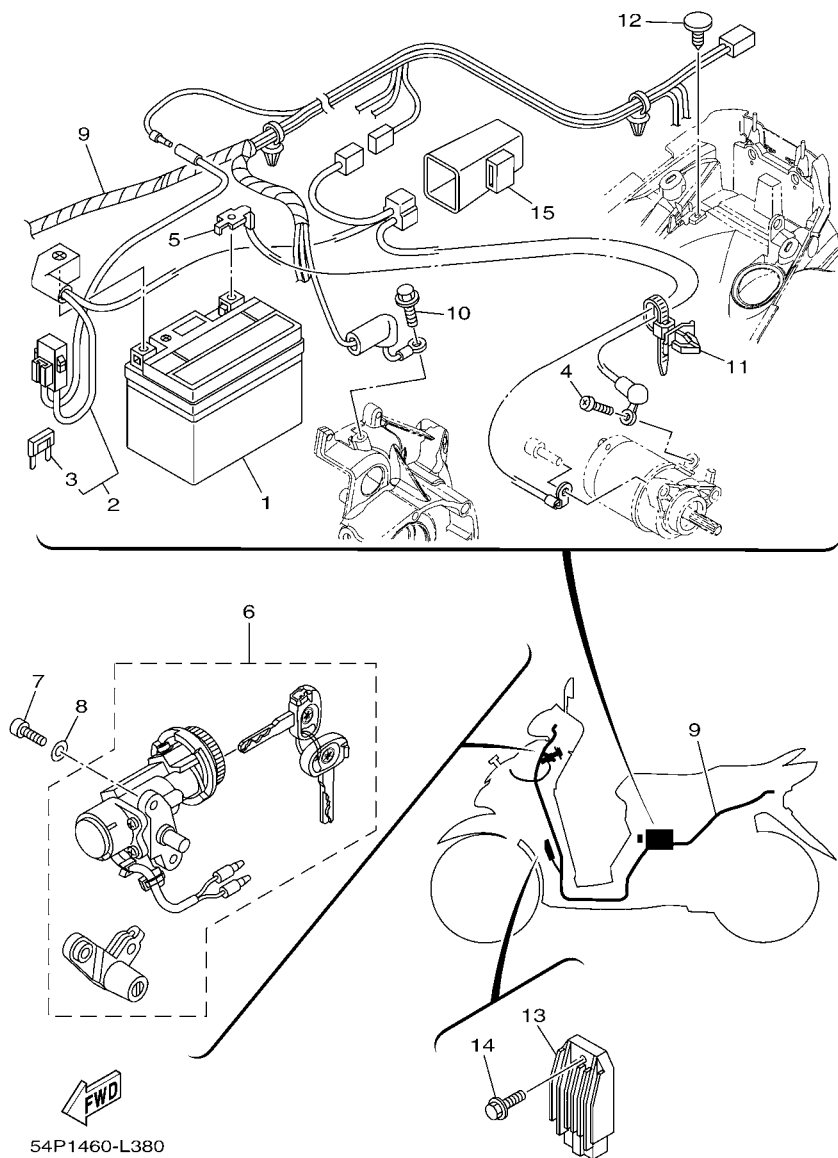


FIG. 38 ELECTRICAL 1

| REF. NO. | PART NO. | DESCRIPTION | 54P1 | 54P2 | 54PA | 54PB | REMARKS |
|----------|--------------|----------------------------|------|------|------|------|---------|
| 1 | 14D-H2100-00 | BATTERY ASSY (YUASA YTZ4V) | 1 | 1 | 1 | 1 | UR |
| | 14D-H2100-10 | BATTERY ASSY (GS GZ4V) | 1 | 1 | 1 | 1 | UR |
| 2 | 54P-H2115-00 | WIRE, PLUS LEAD | 1 | 1 | 1 | 1 | |
| 3 | 54P-H2151-00 | .FUSE | 1 | 1 | 1 | 1 | |
| 4 | 98902-05008 | SCREW, BIND | 1 | 1 | 1 | 1 | |
| 5 | 54P-H2116-00 | WIRE, MINUS LEAD | 1 | 1 | 1 | 1 | |
| 6 | 54P-XH252-00 | MAIN SWITCH SUB ASSY. | 1 | 1 | 1 | 1 | |
| 7 | 91312-06014 | BOLT | 2 | 2 | 2 | 2 | |
| 8 | 92902-06600 | WASHER, PLATE | 2 | 2 | 2 | 2 | |
| 9 | 54P-H2590-00 | WIRE HARNESS ASSY | 1 | 1 | 1 | 1 | UR |
| | 54P-H2590-10 | WIRE HARNESS ASSY | 1 | 1 | 1 | 1 | UR |
| 10 | 95022-06012 | BOLT, FLANGE | 1 | 1 | 1 | 1 | |
| 11 | 90464-12810 | CLAMP | 1 | 1 | 1 | 1 | |
| 12 | 90269-06811 | RIVET | 1 | 1 | 1 | 1 | |
| 13 | 54P-H1960-00 | RECTIFIER & REGULATOR ASSY | 1 | 1 | 1 | 1 | |
| 14 | 90105-068A0 | BOLT, FLANGE | 1 | 1 | 1 | 1 | |
| 15 | 5TP-H1940-00 | STARTER RELAY ASSY | 1 | 1 | 1 | 1 | |
| | | | | | | | |
| | | | | | | | |
| | | | | | | | |
| | | | | | | | |

NUMERICAL INDEX

| PART NO. | REF. NO. | PART NO. | REF. NO. | PART NO. | REF. NO. | PART NO. | REF. NO. | PART NO. | REF. NO. | PART NO. | REF. NO. |
|--------------|----------|--------------|----------|--------------|----------|-----------------|----------|-----------------|----------|--------------|----------|
| 5LW-15659-01 | 10 - 6 | 54P-E2241-00 | 4 - 10 | 54P-E4718-00 | 8 - 2 | 54P-E7471-00 | 12 - 2 | 54P-F1552-20 | 30 - 10 | 40D-F1737-00 | 30 - 22 |
| 18G-23411-00 | 18 - 17 | 54P-E2611-00 | 6 - 13 | 54P-E5113-00 | 9 - 20 | 54P-E7611-00 | 12 - 12 | 54P-F1569-00 | 15 - 3 | 54P-F173E-00 | 16 - 14 |
| 5TL-2341E-00 | 18 - 25 | 54P-E262H-00 | 6 - 4 | 54P-E5150-00 | 9 - 1 | 54P-E7620-00 | 12 - 7 | 54P-F1569-10 | 15 - 3 | 54P-F173E-10 | 16 - 14 |
| 5TL-2341E-10 | 18 - 28 | 54P-E2651-00 | 6 - 1 | 54P-E5150-10 | 9 - 1 | 54P-E7623-00 | 12 - 9 | 54P-F1569-20 | 15 - 3 | 54P-F173E-20 | 16 - 14 |
| 36Y-2589H-00 | 28 - 8 | 54P-E2652-00 | 6 - 3 | 54P-E5191-00 | 10 - 7 | 54P-E7632-00 | 12 - 8 | 54P-F1569-30 | 15 - 3 | 54P-F173E-30 | 16 - 14 |
| 54P-E1102-00 | 1 - 1 | 54P-E2658-00 | 6 - 2 | 54P-E5316-00 | 10 - 11 | 54P-E7641-00 | 12 - 26 | 54P-F1569-40 | 15 - 3 | 54P-F173E-40 | 16 - 14 |
| 54P-E111F-00 | 4 - 3 | 54P-E2659-00 | 6 - 9 | 54P-E5351-00 | 5 - 4 | 44D-E7645-00 | 12 - 27 | 54P-F1579-00 | 15 - 4 | 54P-F173E-60 | 16 - 14 |
| 54P-E111J-00 | 1 - 7 | 44D-E2662-00 | 3 - 11 | 54P-E5362-00 | 9 - 21 | 54P-E7649-00 | 12 - 33 | 54P-F1579-10 | 15 - 4 | 54P-F173E-70 | 16 - 14 |
| 54P-E1133-10 | 1 - 2 | 54P-E2668-00 | 6 - 10 | 5LW-E5363-00 | 9 - 18 | 54P-E7653-00 | 12 - 10 | 54P-F1579-20 | 15 - 4 | 54P-F173E-80 | 16 - 14 |
| 54P-E1162-00 | 1 - 22 | 54P-E2684-00 | 6 - 5 | 54P-E5371-00 | 9 - 7 | 54P-E7660-00 | 12 - 14 | 54P-F1579-30 | 15 - 4 | 54P-F173E-90 | 16 - 14 |
| 54P-E1165-00 | 1 - 9 | 28D-E3300-10 | 5 - 1 | | 10 - 3 | 5TL-E7664-00 | 12 - 18 | 54P-F1579-40 | 15 - 4 | 54P-F173E-A0 | 16 - 14 |
| 54P-E1166-00 | 7 - 39 | 5TL-E3324-00 | 2 - 8 | 54P-E5373-00 | 9 - 8 | 44D-E7668-00 | 12 - 21 | 54P-F1611-00 | 15 - 5 | 54P-F173F-00 | 16 - 15 |
| 54P-E1169-00 | 1 - 10 | 54P-E3411-00 | 5 - 5 | 54P-E5383-00 | 10 - 9 | 54P-E7670-00 | 12 - 15 | 54P-F1621-00 | 15 - 10 | 54P-F173F-10 | 16 - 15 |
| 54P-E1173-00 | 1 - 13 | 5LW-E3452-00 | 2 - 6 | 54P-E5407-00 | 10 - 22 | 54P-E7674-00 | 12 - 11 | 4ST-F1638-00 | 30 - 8 | 54P-F173F-20 | 16 - 15 |
| 54P-E1181-00 | 1 - 17 | 54P-E3474-00 | 7 - 16 | 14D-E5408-00 | 9 - 9 | 54P-E7678-00 | 12 - 24 | 54P-F1711-00-P0 | 16 - 4 | 54P-F173F-30 | 16 - 15 |
| 54P-E1191-00 | 1 - 8 | 5LW-E3475-00 | 5 - 2 | 54P-E5408-00 | 10 - 17 | 54P-E7678-10 | 12 - 22 | 54P-F1711-00-P1 | 16 - 4 | 54P-F173F-40 | 16 - 15 |
| 54P-E1193-00 | 1 - 14 | 54P-E3556-00 | 7 - 3 | 54P-E5411-00 | 10 - 1 | 54P-E7683-00 | 12 - 19 | 54P-F1711-00-P2 | 16 - 4 | 54P-F173F-60 | 16 - 15 |
| 4YS-E1198-00 | 9 - 15 | 54P-E3557-00 | 7 - 14 | 54P-E5413-00 | 10 - 25 | 54P-E7684-00 | 12 - 20 | 54P-F1711-00-P3 | 16 - 4 | 54P-F173F-70 | 16 - 15 |
| 54P-E1311-00 | 1 - 21 | 5LW-E3569-00 | 6 - 16 | 54P-E5417-00 | 9 - 23 | 54P-F1110-00 | 14 - 1 | 54P-F1711-00-P4 | 16 - 4 | 54P-F173F-80 | 16 - 15 |
| 54P-E1311-10 | 1 - 21 | 54P-E3575-00 | 7 - 37 | 54P-E5421-00 | 9 - 36 | 54P-F1110-10 | 14 - 1 | 54P-F1711-10-P0 | 16 - 4 | 54P-F173F-90 | 16 - 15 |
| 54P-E1351-00 | 1 - 23 | 54P-E3585-00 | 7 - 1 | 54P-E5423-00 | 9 - 30 | 54P-F1161-00 | 18 - 34 | 54P-F1711-10-P1 | 16 - 4 | 54P-F173F-A0 | 16 - 15 |
| 54P-E1400-00 | 2 - 1 | 54P-E3593-00 | 7 - 5 | 54P-E5451-00 | 10 - 2 | 54P-F117K-00 | 20 - 19 | 54P-F1711-10-P2 | 16 - 4 | 54P-F174G-00 | 16 - 2 |
| 54P-E1400-10 | 2 - 1 | 54P-E3595-00 | 7 - 2 | 54P-E5453-00 | 9 - 26 | 54P-F1268-00 | 14 - 2 | 54P-F1711-10-P3 | 16 - 4 | 54P-F174G-00 | 16 - 16 |
| 54P-E1422-00 | 2 - 5 | 54P-E3750-00 | 7 - 17 | 54P-E5461-00 | 9 - 37 | 54P-F1410-00 | 14 - 3 | 54P-F1711-10-P4 | 16 - 4 | 54P-F174G-10 | 16 - 16 |
| 54P-E1445-00 | 2 - 14 | 54P-E3761-00 | 7 - 9 | 54P-E5471-00 | 10 - 18 | 54P-F1459-00 | 14 - 10 | 54P-F1711-10-P6 | 16 - 4 | 54P-F174G-20 | 16 - 16 |
| 54P-E1445-10 | 2 - 14 | 5LW-E3769-00 | 9 - 22 | 54P-E5472-00 | 10 - 20 | 54P-F1511-00-P0 | 15 - 1 | 54P-F1721-00-P0 | 16 - 8 | 54P-F174G-30 | 16 - 16 |
| 54P-E1603-00 | 2 - 13 | 54P-E3770-00 | 7 - 8 | 54P-E5473-00 | 10 - 16 | 54P-F1511-00-P1 | 15 - 1 | 54P-F1721-00-P1 | 16 - 8 | 54P-F174G-40 | 16 - 16 |
| 54P-E1631-00 | 2 - 10 | 54P-E3815-00 | 7 - 20 | 54P-E5495-00 | 10 - 21 | 54P-F1511-00-P2 | 15 - 1 | 54P-F1721-00-P2 | 16 - 8 | 54P-F174G-60 | 16 - 16 |
| 54P-E1633-00 | 2 - 11 | 54P-E3892-00 | 7 - 18 | 54P-E5512-00 | 11 - 6 | 54P-F1511-00-P3 | 15 - 1 | 54P-F1721-00-P3 | 16 - 8 | 54P-F174G-70 | 16 - 16 |
| 5D9-E1651-00 | 2 - 4 | 54P-E3895-00 | 7 - 19 | 44D-E5521-00 | 11 - 7 | 54P-F1511-00-P4 | 15 - 1 | 54P-F1721-00-P4 | 16 - 8 | 54P-F174G-80 | 16 - 16 |
| 5MX-E1681-10 | 2 - 2 | 54P-E3907-10 | 19 - 6 | 54P-E5524-00 | 11 - 1 | 54P-F1511-10-P0 | 15 - 1 | 54P-F1721-10-P0 | 16 - 8 | 54P-F174G-90 | 16 - 16 |
| 54P-E2111-00 | 3 - 1 | 54P-E3938-00 | 7 - 12 | 54P-E5570-00 | 11 - 4 | 54P-F1511-10-P1 | 15 - 1 | 54P-F1721-10-P1 | 16 - 8 | 54P-F174G-A0 | 16 - 16 |
| 54P-E2113-00 | 3 - 4 | 54P-E3971-00 | 19 - 3 | 44D-E5598-00 | 11 - 5 | 54P-F1511-10-P2 | 15 - 1 | 54P-F1721-10-P2 | 16 - 8 | 54P-F174H-00 | 16 - 17 |
| 54P-E2117-00 | 3 - 6 | 54P-E4137-00 | 7 - 13 | 5TL-E5601-10 | 11 - 8 | 54P-F1511-10-P3 | 15 - 1 | 54P-F1721-10-P3 | 16 - 8 | 54P-F174H-10 | 16 - 17 |
| 5TL-E2118-00 | 3 - 5 | 54P-E4146-00 | 7 - 23 | 54P-E5620-00 | 11 - 14 | 54P-F1511-10-P4 | 15 - 1 | 54P-F1721-10-P4 | 16 - 8 | 54P-F174H-20 | 16 - 17 |
| 54P-E2119-00 | 3 - 3 | 54P-E4147-00 | 7 - 10 | 4VP-E5630-00 | 11 - 16 | 54P-F1511-10-P6 | 15 - 1 | 54P-F1721-10-P6 | 16 - 8 | 54P-F174H-30 | 16 - 17 |
| 54P-E2121-00 | 3 - 2 | 5CA-E4147-00 | 7 - 11 | 5MX-E5657-00 | 12 - 30 | 3S0-F153E-00 | 16 - 18 | 54P-F172W-00 | 16 - 1 | 54P-F174H-40 | 16 - 17 |
| 5P0-E2126-00 | 3 - 7 | 54P-E4411-00 | 7 - 24 | 5MX-E5673-00 | 11 - 17 | | 30 - 27 | 54P-F1731-00-P0 | 16 - 12 | 54P-F174H-60 | 16 - 17 |
| 54P-E2146-00 | 3 - 12 | 54P-E4412-00 | 7 - 25 | 44D-E5744-00 | 12 - 23 | | 30 - 28 | 54P-F1731-00-P1 | 16 - 12 | 54P-F174H-70 | 16 - 17 |
| 54P-E2151-00 | 3 - 8 | 54P-E442F-00 | 7 - 42 | 54P-E6111-00 | 12 - 1 | 3S0-F153E-20 | 16 - 18 | 54P-F1731-00-P2 | 16 - 12 | 54P-F174H-80 | 16 - 17 |
| 33S-E2159-00 | 3 - 10 | 54P-E4437-00 | 7 - 26 | 54P-E6611-00 | 12 - 25 | | 30 - 27 | 54P-F1731-00-P3 | 16 - 12 | 54P-F174H-90 | 16 - 17 |
| 54P-E2170-00 | 4 - 1 | 28D-E443E-00 | 7 - 33 | 54P-E6620-00 | 12 - 13 | | 30 - 28 | 54P-F1731-00-P4 | 16 - 12 | 54P-F174H-A0 | 16 - 17 |
| 44D-E2176-00 | 4 - 5 | 4ST-E443E-00 | 10 - 4 | 54P-E7155-00 | 13 - 8 | 3S0-F153E-30 | 16 - 18 | 54P-F1731-10-P0 | 16 - 12 | 54P-F2141-00 | 14 - 12 |
| 5MX-E2210-10 | 4 - 11 | 5TP-E443G-00 | 7 - 30 | 54P-E7211-00 | 13 - 5 | | 30 - 27 | 54P-F1731-10-P1 | 16 - 12 | 54P-F2210-00 | 17 - 1 |
| 54P-E2213-00 | 4 - 12 | 54P-E4452-00 | 7 - 29 | 54P-E7410-00 | 13 - 1 | | 30 - 28 | 54P-F1731-10-P2 | 16 - 12 | 54P-F2210-10 | 17 - 1 |
| 54P-E2228-00 | 4 - 14 | 54P-E4453-00 | 7 - 28 | 54P-E7421-00 | 13 - 4 | 3S0-F153E-40 | 16 - 18 | 54P-F1731-10-P3 | 16 - 12 | 5MX-F2216-00 | 9 - 5 |
| 54P-E2231-00 | 4 - 7 | 54P-E4610-00 | 8 - 1 | 54P-E7465-00 | 12 - 16 | 54P-F1552-00 | 30 - 10 | 54P-F1731-10-P4 | 16 - 12 | 54P-F3100-00 | 18 - 1 |
| 44D-E2233-00 | 4 - 8 | 14D-E4613-00 | 8 - 5 | 54P-E7465-10 | 12 - 17 | 54P-F1552-10 | 30 - 10 | 54P-F1731-10-P6 | 16 - 12 | 14D-F3108-00 | 27 - 10 |

NUMERICAL INDEX

| PART NO. | REF. NO. | PART NO. | REF. NO. | PART NO. | REF. NO. | PART NO. | REF. NO. | PART NO. | REF. NO. | PART NO. | REF. NO. |
|-----------------|----------|-----------------|----------|-----------------|----------|-----------------|----------|-----------------|----------|--------------|----------|
| 28D-F3110-00 | 18 - 8 | 54P-F5168-00-P1 | 21 - 1 | 5YP-F5939-00 | 23 - 13 | 54P-F7441-00 | 29 - 26 | 54P-F832L-70 | 30 - 23 | 54P-H2310-00 | 39 - 4 |
| 28D-F3111-00 | 18 - 19 | 3AY-F5181-01 | 21 - 8 | | 24 - 14 | 54P-F7442-00 | 29 - 27 | 54P-F832L-80 | 30 - 23 | 54P-H2370-00 | 39 - 7 |
| 54P-F3126-00 | 18 - 5 | | 22 - 12 | 54P-F6110-00 | 27 - 1 | 54P-F7481-00 | 29 - 7 | 54P-F832L-90 | 30 - 23 | 54P-H2590-00 | 38 - 9 |
| 54P-F3136-00 | 18 - 2 | 54P-F518A-00 | 24 - 3 | 54P-F6143-00-P0 | 27 - 5 | 54P-F8100-00 | 20 - 25 | 54P-F832L-A0 | 30 - 23 | 54P-H2590-10 | 38 - 9 |
| 28D-F3141-00 | 18 - 15 | 5TL-F5190-01 | 21 - 11 | 54P-F6143-00-P1 | 27 - 5 | 54P-F8300-00 | 30 - 2 | 54P-F8356-00 | 14 - 14 | 54P-H2599-00 | 39 - 3 |
| 5LM-F3144-00 | 18 - 14 | | 22 - 15 | 54P-F6143-00-P2 | 27 - 5 | 54P-F8311-00-P0 | 30 - 1 | 54P-F8365-00 | 30 - 3 | 5TL-H2911-20 | 37 - 6 |
| 3AY-F3145-00 | 18 - 3 | 5MX-F530K-00 | 25 - 7 | 54P-F6143-00-P3 | 27 - 5 | 54P-F8311-00-P1 | 30 - 1 | 54P-F8385-00 | 30 - 7 | 54P-H3310-00 | 33 - 1 |
| | 18 - 6 | | 26 - 11 | 54P-F6143-00-P4 | 27 - 5 | 54P-F8311-00-P2 | 30 - 1 | 54P-F8385-10 | 30 - 7 | 5HV-H3311-00 | 33 - 2 |
| 2JG-F3147-00 | 18 - 20 | 5TL-F5311-00 | 26 - 1 | 54P-F6143-10-P0 | 27 - 5 | 54P-F8311-00-P3 | 30 - 1 | 54P-F8385-20 | 30 - 7 | | 33 - 9 |
| 5D9-F3152-00 | 18 - 11 | 54P-F5326-00 | 25 - 4 | 54P-F6143-10-P1 | 27 - 5 | 54P-F8311-00-P4 | 30 - 1 | 54P-F83D3-00-P0 | 30 - 14 | | 36 - 3 |
| 5P0-F3153-00 | 18 - 23 | | 26 - 8 | 54P-F6143-10-P2 | 27 - 5 | 54P-F8311-10-P0 | 30 - 1 | 54P-F83D3-00-P1 | 30 - 14 | 54P-H3320-00 | 33 - 8 |
| 5P0-F3156-00 | 18 - 4 | 54P-F5338-00-33 | 25 - 1 | 54P-F6143-10-P3 | 27 - 5 | 54P-F8311-10-P1 | 30 - 1 | 54P-F83D3-00-P2 | 30 - 14 | 5D9-H3350-00 | 39 - 12 |
| | 18 - 7 | 54P-F5338-00-P1 | 25 - 1 | | 27 - 5 | 54P-F8311-10-P2 | 30 - 1 | 54P-F83D3-00-P3 | 30 - 14 | 54P-H3371-00 | 39 - 13 |
| 2JG-F3157-00 | 18 - 10 | 5MX-F533A-00 | 25 - 12 | 54P-F6143-10-P4 | 27 - 5 | 54P-F8311-10-P3 | 30 - 1 | 54P-F83D3-00-P4 | 30 - 14 | 54P-H3509-00 | 34 - 6 |
| 509-F3158-L0 | 18 - 12 | | 26 - 16 | 54P-F6143-10-P6 | 27 - 5 | | 30 - 1 | 54P-F83D3-10-P0 | 30 - 14 | 54P-H3510-00 | 34 - 1 |
| 4D0-F3165-00 | 18 - 22 | 5MX-F5351-00 | 25 - 10 | 54P-F6145-00 | 27 - 9 | 54P-F8311-10-P4 | 30 - 1 | 54P-F83D3-10-P1 | 30 - 14 | 54P-H3511-00 | 34 - 2 |
| 28D-F3170-00 | 18 - 9 | | 26 - 14 | 54P-F6192-00 | 27 - 32 | 54P-F8311-10-P6 | 30 - 1 | 54P-F83D3-10-P2 | 30 - 14 | 2S0-H3516-00 | 33 - 3 |
| 278-F3181-50 | 18 - 13 | 5LW-F5355-00 | 25 - 11 | 54P-F6192-10 | 27 - 32 | 54P-F831Y-00 | 30 - 24 | 54P-F83D3-10-P3 | 30 - 14 | | 33 - 10 |
| 28D-F3340-00 | 18 - 16 | | 26 - 15 | 54P-F6192-20 | 27 - 32 | 54P-F831Y-10 | 30 - 24 | 54P-F83D3-10-P4 | 30 - 14 | 32P-H3517-00 | 34 - 5 |
| 4D0-F3346-00 | 18 - 18 | 5P0-F5802-00 | 23 - 4 | 54P-F6192-30 | 27 - 32 | 54P-F831Y-20 | 30 - 24 | 54P-F83D3-10-P6 | 30 - 14 | 4TE-H3517-00 | 34 - 4 |
| 54P-F334G-00 | 18 - 21 | | 24 - 5 | 54P-F6193-00 | 27 - 33 | 54P-F831Y-30 | 30 - 24 | 54P-F83D4-00-P0 | 30 - 17 | 54P-H353F-00 | 34 - 3 |
| 54P-F3411-00 | 18 - 27 | 5YP-F5803-50 | 23 - 5 | 54P-F6193-10 | 27 - 33 | 54P-F831Y-40 | 30 - 24 | 54P-F83D4-00-P1 | 30 - 17 | 54P-H3550-00 | 34 - 10 |
| 28D-F3412-00 | 18 - 24 | | 24 - 6 | 54P-F6193-20 | 27 - 33 | 54P-F832B-00 | 30 - 25 | 54P-F83D4-00-P2 | 30 - 17 | 54P-H3550-10 | 34 - 10 |
| 54P-F3412-00 | 18 - 26 | 3C1-F5805-10 | 23 - 9 | 54P-F6193-30 | 27 - 33 | 54P-F832B-10 | 30 - 25 | 54P-F83D4-00-P3 | 30 - 17 | 54P-H3591-00 | 39 - 8 |
| 5TL-F3416-00 | 18 - 29 | | 24 - 10 | 44D-F6240-00 | 27 - 13 | 54P-F832B-20 | 30 - 25 | 54P-F83D4-00-P4 | 30 - 17 | 5HH-H362Y-00 | 34 - 8 |
| 54P-F4110-00 | 19 - 1 | 44D-F580U-00 | 23 - 3 | 44D-F6241-00 | 27 - 14 | 54P-F832B-30 | 30 - 25 | 54P-F83D4-10-P0 | 30 - 17 | 5TL-H3912-20 | 37 - 7 |
| 54P-F4110-10 | 19 - 1 | 54P-F580U-00 | 24 - 4 | 54P-F6246-00 | 27 - 15 | 54P-F832B-40 | 30 - 25 | 54P-F83D4-10-P1 | 30 - 17 | 5TL-H3922-00 | 37 - 13 |
| 54P-F414A-00 | 19 - 10 | 5P0-F5827-00 | 23 - 14 | 2P2-F6280-11 | 27 - 16 | 54P-F832B-60 | 30 - 25 | 54P-F83D4-10-P2 | 30 - 17 | 5TL-H3955-20 | 37 - 2 |
| 54P-F414G-00 | 19 - 7 | 54P-F582U-00 | 23 - 1 | 44D-F6281-00 | 27 - 29 | 54P-F832B-70 | 30 - 25 | 54P-F83D4-10-P3 | 30 - 17 | 44D-H3973-00 | 37 - 1 |
| 54P-F419F-00 | 19 - 4 | | 24 - 1 | 44D-F6282-00 | 27 - 30 | 54P-F832B-80 | 30 - 25 | 54P-F83D4-10-P4 | 30 - 17 | 54P-H3976-00 | 37 - 5 |
| 54P-F4491-00 | 19 - 8 | 5P0-F583T-03 | 28 - 4 | 2P2-F6290-11 | 27 - 17 | 54P-F832B-90 | 30 - 25 | 54P-F83D4-10-P6 | 30 - 17 | 54P-H3980-00 | 37 - 16 |
| 4YY-F4610-00 | 19 - 11 | 5P0-F5852-00 | 28 - 7 | 54P-F6301-00 | 27 - 18 | 54P-F832B-A0 | 30 - 25 | 54P-H1328-00 | 39 - 11 | 5TL-H3980-10 | 37 - 10 |
| 4YY-F4612-00 | 19 - 12 | 5P0-F5854-00 | 28 - 6 | 54P-F6301-10 | 27 - 18 | 54P-F832C-00 | 30 - 26 | 54P-H132G-00 | 31 - 5 | 54P-H4140-00 | 33 - 4 |
| 54P-F4704-00 | 20 - 5 | 5P0-F5855-00 | 28 - 10 | 54P-F6351-00 | 27 - 21 | 54P-F832C-10 | 30 - 26 | 54P-H1410-00 | 31 - 2 | | 35 - 3 |
| 54P-F470F-00 | 20 - 2 | 5TL-F5867-01 | 28 - 9 | 54P-F637G-00 | 27 - 22 | 54P-F832C-20 | 30 - 26 | 54P-H1450-00 | 31 - 1 | 54P-H4150-00 | 33 - 11 |
| 54P-F4726-00 | 20 - 14 | 14D-F5872-00 | 28 - 1 | 54P-F7111-00 | 29 - 1 | 54P-F832C-30 | 30 - 26 | 5TP-H1801-00 | 32 - 2 | 54P-H4310-00 | 35 - 1 |
| 5TL-F4727-00 | 20 - 13 | 28D-F5875-00 | 18 - 31 | 54P-F7112-00 | 29 - 2 | 54P-F832C-40 | 30 - 26 | 5D9-H1828-00 | 32 - 4 | 5HV-H4314-00 | 35 - 2 |
| 54P-F4730-00 | 20 - 1 | 28D-F5876-00 | 18 - 32 | 44D-F7114-00 | 14 - 6 | 54P-F832C-60 | 30 - 26 | 5D9-H1861-00 | 32 - 3 | 3S0-H4374-00 | 33 - 7 |
| 3C1-F4741-00 | 20 - 4 | 5YP-F5917-00 | 23 - 6 | 4YY-F7114-00 | 29 - 16 | 54P-F832C-70 | 30 - 26 | 54P-H1890-00 | 32 - 1 | | 33 - 14 |
| 5TL-F4741-00 | 20 - 3 | | 24 - 7 | 54P-F7114-00 | 27 - 23 | 54P-F832C-80 | 30 - 26 | 5TP-H1940-00 | 38 - 15 | | 35 - 4 |
| 54P-F4773-00-35 | 20 - 22 | 5P0-F5919-00 | 23 - 11 | 54P-F7121-00 | 9 - 4 | 54P-F832C-90 | 30 - 26 | 54P-H1960-00 | 38 - 13 | 54P-H454E-00 | 30 - 20 |
| 54P-F4773-00-P0 | 20 - 22 | | 24 - 12 | 5LW-F7254-00 | 29 - 5 | 54P-F832C-A0 | 30 - 26 | 14D-H2100-00 | 38 - 1 | 54P-H4704-00 | 36 - 5 |
| 5TL-F4780-00 | 20 - 16 | 5YP-F5924-00 | 23 - 12 | 54P-F7267-00 | 29 - 6 | 54P-F832L-00 | 30 - 23 | 14D-H2100-10 | 38 - 1 | 54P-H4704-10 | 36 - 6 |
| 54P-F478E-00 | 20 - 21 | | 24 - 13 | 54P-F7311-00 | 29 - 11 | 54P-F832L-10 | 30 - 23 | 54P-H2115-00 | 38 - 2 | 54P-H4710-00 | 36 - 1 |
| 5TL-F4792-00 | 20 - 17 | 5YP-F5925-01 | 23 - 10 | 54P-F7430-00 | 29 - 17 | 54P-F832L-20 | 30 - 23 | 54P-H2116-00 | 38 - 5 | 54P-H4710-10 | 36 - 1 |
| 5TL-F5104-01 | 22 - 5 | | 24 - 11 | 54P-F7431-00 | 29 - 18 | 54P-F832L-30 | 30 - 23 | 54P-H2129-00 | 20 - 10 | 4AC-H4714-00 | 36 - 2 |
| 54P-F5111-00-35 | 22 - 1 | 5YP-F5937-00 | 23 - 7 | 54P-F7432-00 | 29 - 19 | 54P-F832L-40 | 30 - 23 | 54P-H2151-00 | 38 - 3 | 54P-H4743-00 | 36 - 4 |
| 54P-F5168-00-33 | 21 - 1 | | 24 - 8 | 54P-F7440-00 | 29 - 25 | 54P-F832L-60 | 30 - 23 | 1KP-H2176-00 | 20 - 6 | 54P-H4743-10 | 36 - 4 |

NUMERICAL INDEX

| PART NO. | REF. NO. | PART NO. | REF. NO. | PART NO. | REF. NO. | PART NO. | REF. NO. | PART NO. | REF. NO. | PART NO. | REF. NO. |
|--------------|----------|-------------|----------|-------------|----------|-------------|----------|-------------|----------|-------------|----------|
| 54P-H5130-00 | 39 - 15 | 90183-05807 | 16 - 11 | 90387-10837 | 21 - 7 | 91312-06025 | 28 - 11 | 93440-10085 | 1 - 3 | 95702-06500 | 20 - 18 |
| 54P-H5546-00 | 39 - 2 | | 20 - 9 | | 22 - 11 | 91401-25015 | 29 - 23 | 93450-14088 | 2 - 12 | 95702-08500 | 8 - 6 |
| 54P-H591A-00 | 39 - 1 | | 27 - 7 | 90388-10800 | 14 - 11 | | 29 - 31 | 93450-32837 | 11 - 3 | 95702-10500 | 25 - 5 |
| 54P-H592A-00 | 39 - 10 | | 27 - 11 | 90388-10805 | 9 - 6 | 91701-08035 | 29 - 22 | 93501-04843 | 29 - 21 | | 26 - 9 |
| 5P0-W0041-00 | 28 - 5 | | 29 - 8 | 90401-10812 | 28 - 2 | | 29 - 30 | | 29 - 29 | 95802-06010 | 14 - 15 |
| 4C9-W0048-00 | 23 - 8 | | 30 - 15 | 90430-06014 | 1 - 5 | 91810-14809 | 1 - 18 | 94107-14802 | 21 - 5 | | 18 - 33 |
| | 24 - 9 | | 30 - 18 | 90430-08119 | 9 - 3 | | 1 - 19 | | 22 - 6 | | 18 - 35 |
| 54P-WE445-00 | 7 - 27 | | 33 - 5 | | 9 - 17 | | 9 - 10 | 94108-14802 | 25 - 2 | | 35 - 5 |
| 28D-WF53H-10 | 26 - 2 | | 33 - 12 | 90430-10804 | 39 - 9 | | 9 - 33 | | 26 - 3 | | 39 - 14 |
| 54P-XH252-00 | 38 - 6 | | 36 - 8 | 90464-12810 | 38 - 11 | | 9 - 38 | 94207-14802 | 21 - 6 | 95802-06030 | 30 - 21 |
| 90101-06046 | 25 - 14 | 90185-10811 | 21 - 9 | 90464-14808 | 39 - 6 | | 10 - 12 | | 22 - 7 | 95802-08030 | 29 - 24 |
| | 26 - 18 | | 22 - 13 | 90467-110A3 | 10 - 5 | 92012-05010 | 27 - 20 | 94208-14802 | 25 - 3 | | 29 - 32 |
| 90101-08847 | 29 - 12 | 90185-10815 | 27 - 4 | 90467-12807 | 7 - 31 | 92012-05016 | 27 - 19 | | 26 - 4 | 95812-06025 | 7 - 15 |
| 90105-068A0 | 38 - 14 | 90185-14814 | 25 - 15 | 90467-13858 | 7 - 40 | 92902-06600 | 38 - 8 | 94307-14802 | 22 - 8 | | 7 - 38 |
| 90105-068A5 | 7 - 6 | | 26 - 19 | | 7 - 41 | 92902-10200 | 23 - 16 | | 26 - 5 | 95812-06030 | 1 - 12 |
| 90105-068A6 | 7 - 7 | 90201-05817 | 8 - 4 | 90467-15804 | 7 - 21 | | 24 - 16 | 94414-14801 | 22 - 9 | 95812-08016 | 9 - 16 |
| 90105-08861 | 17 - 2 | 90201-10065 | 17 - 5 | | 7 - 22 | 93102-15801 | 11 - 13 | 94416-14801 | 26 - 6 | 95812-08045 | 8 - 7 |
| 90105-088E1 | 4 - 4 | 90201-10118 | 28 - 3 | 90480-13013 | 7 - 36 | 93102-17803 | 12 - 6 | 94568-A6090 | 4 - 6 | 95822-06016 | 6 - 15 |
| 90105-088E3 | 14 - 8 | 90201-10831 | 21 - 10 | 90501-12743 | 29 - 20 | 93102-19814 | 9 - 24 | 94700-00880 | 1 - 16 | | 20 - 23 |
| 90105-10036 | 27 - 3 | | 22 - 14 | | 29 - 28 | 93102-25816 | 9 - 31 | 95022-06010 | 1 - 4 | 95822-06020 | 10 - 24 |
| 90105-10283 | 14 - 4 | 90201-12028 | 17 - 4 | 90501-16003 | 27 - 26 | 93102-26809 | 13 - 7 | | 10 - 8 | 95822-06090 | 10 - 23 |
| 90109-06202 | 15 - 2 | 90201-12688 | 31 - 6 | 90501-16004 | 5 - 6 | 93106-20816 | 21 - 3 | | 19 - 5 | 97602-05216 | 37 - 3 |
| | 15 - 7 | 90201-14820 | 25 - 16 | 90506-12001 | 25 - 8 | | 22 - 3 | 95022-06012 | 38 - 10 | 97602-06220 | 6 - 11 |
| | 20 - 8 | | 26 - 20 | | 26 - 12 | 93210-07802 | 25 - 6 | 95022-06014 | 27 - 25 | 97702-60530 | 6 - 12 |
| 90109-06255 | 37 - 14 | 90201-154E8 | 11 - 11 | 90506-15001 | 25 - 9 | | 26 - 10 | 95022-06016 | 9 - 29 | 97707-04616 | 36 - 7 |
| 90109-06814 | 37 - 8 | 90201-15841 | 12 - 29 | | 26 - 13 | 93210-148H8 | 9 - 19 | 95022-06020 | 4 - 13 | 97707-50012 | 20 - 12 |
| 90110-06862 | 1 - 20 | 90201-20276 | 25 - 17 | 90506-20514 | 29 - 15 | 93210-16805 | 12 - 28 | | 39 - 5 | 97707-50016 | 15 - 8 |
| 90111-06811 | 8 - 3 | | 26 - 21 | 90506-35821 | 29 - 4 | 93210-258G2 | 12 - 34 | 95022-06025 | 9 - 34 | | 16 - 3 |
| 90111-08815 | 23 - 2 | 90206-14093 | 25 - 13 | 90508-32768 | 11 - 9 | 93210-29800 | 5 - 7 | 95022-06035 | 9 - 35 | | 16 - 6 |
| | 24 - 2 | | 26 - 17 | 90520-03806 | 20 - 7 | 93210-29803 | 32 - 6 | | 9 - 39 | | 16 - 10 |
| 90116-08843 | 9 - 13 | 90208-12808 | 12 - 31 | | 20 - 11 | 93210-30611 | 7 - 4 | | 10 - 13 | | 27 - 2 |
| 90119-06044 | 19 - 2 | 90249-12008 | 27 - 28 | 90520-03810 | 20 - 24 | 93210-94800 | 6 - 14 | 95022-06040 | 27 - 24 | | 27 - 8 |
| | 29 - 9 | 90269-06811 | 38 - 12 | 90520-03811 | 30 - 11 | 93211-07800 | 9 - 25 | 95022-06045 | 10 - 14 | | 27 - 12 |
| 90149-05801 | 1 - 11 | 90269-06812 | 15 - 9 | 90520-05810 | 6 - 8 | 93211-37803 | 9 - 32 | 95022-06060 | 9 - 11 | | 29 - 10 |
| 90149-10804 | 23 - 15 | | 30 - 13 | 90520-08806 | 15 - 6 | 93306-002YS | 4 - 2 | 95022-06070 | 9 - 12 | | 30 - 6 |
| | 24 - 15 | 90280-03017 | 2 - 9 | 90520-10811 | 10 - 19 | 93306-006Y5 | 12 - 36 | | 9 - 28 | | 30 - 9 |
| 90151-06811 | 10 - 10 | 90340-12808 | 9 - 14 | 90520-15806 | 10 - 26 | 93306-054X9 | 13 - 6 | 95022-06080 | 10 - 15 | | 30 - 12 |
| 90159-06054 | 20 - 20 | 90380-15811 | 11 - 10 | 90520-20806 | 27 - 6 | 93306-253Y9 | 12 - 5 | 95022-08012 | 9 - 2 | | 30 - 16 |
| 90159-06810 | 16 - 13 | 90387-05820 | 16 - 5 | 90560-10292 | 21 - 2 | | 13 - 9 | 95302-10600 | 17 - 3 | | 30 - 19 |
| 90163-05803 | 7 - 32 | | 16 - 9 | | 22 - 2 | 93306-300YF | 21 - 4 | 9530N-03600 | 34 - 7 | | 33 - 6 |
| 90170-05803 | 3 - 9 | 90387-064W3 | 7 - 35 | 91312-05010 | 19 - 9 | | 22 - 4 | 95602-06100 | 37 - 9 | | 33 - 13 |
| 90170-12800 | 12 - 32 | 90387-067V1 | 6 - 7 | 91312-06010 | 12 - 3 | 93306-301XT | 13 - 2 | | 37 - 15 | | 34 - 9 |
| 90175-06013 | 27 - 27 | 90387-06891 | 7 - 34 | 91312-06012 | 4 - 9 | | 13 - 3 | 95602-08200 | 14 - 9 | | 36 - 9 |
| 90179-08518 | 1 - 15 | 90387-07828 | 30 - 5 | 91312-06014 | 38 - 7 | 93306-372X2 | 2 - 7 | | 29 - 14 | | 37 - 4 |
| 90179-10803 | 12 - 35 | 90387-08815 | 22 - 10 | 91312-06020 | 31 - 3 | 93306-372Y5 | 2 - 7 | 95602-10200 | 14 - 5 | 97707-50020 | 6 - 6 |
| 90179-12004 | 31 - 7 | | 26 - 7 | | 32 - 5 | 93306-804Y3 | 11 - 2 | | 14 - 13 | 98502-05020 | 5 - 3 |
| 90179-25002 | 18 - 30 | 90387-08820 | 29 - 13 | | 37 - 12 | 93306-804Y4 | 11 - 2 | 95612-08618 | 1 - 6 | 98502-05025 | 27 - 31 |
| 90183-05807 | 16 - 7 | 90387-08821 | 14 - 7 | 91312-06025 | 11 - 15 | 93310-528Y8 | 2 - 3 | 95702-06500 | 20 - 15 | 98502-06016 | 31 - 4 |

NUMERICAL INDEX

| PART NO. | REF. NO. | PART NO. | REF. NO. | PART NO. | REF. NO. | PART NO. | REF. NO. | PART NO. | REF. NO. |
|-------------|----------|----------|----------|----------|----------|----------|----------|----------|----------|
| 9870M-03008 | 37 - 11 | | | | | | | | |
| 98902-05008 | 38 - 4 | | | | | | | | |
| 98907-06012 | 30 - 4 | | | | | | | | |
| 99002-08600 | 29 - 3 | | | | | | | | |
| 99009-15400 | 11 - 12 | | | | | | | | |
| 99009-17400 | 12 - 4 | | | | | | | | |
| 99480-05010 | 9 - 27 | | | | | | | | |